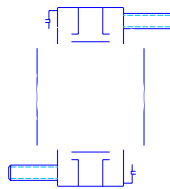
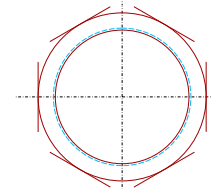


**NOTES:**

1. ELECTRICAL TEST AT 630VDC FOR 500 MOHMS MIN CONDUCTOR TO CONDUCTOR AND HOUSING FOR SHORTS.
2. HELIUM LEAK TEST TO 1 X 10 cc/s
3. NUT & VACUUM SIDE STRAIN RELIEF SHIPPED LOOSE. CUSTOMER TO INSTALL.



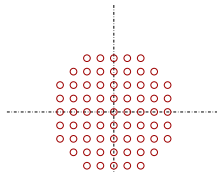
VIEW A-A



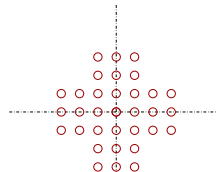
VIEW B-B

WIRE MARKERS HERE NOT VACUUM COMPATIBLE CUSTOMER TO REMOVE ON INSTALLATION

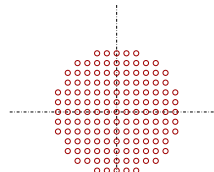
69-12AWG WIRES  
WIRE .109 THRU ON .220 CENTERS, 69 WIRES, 2 EXTRA



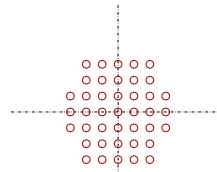
33-10AWG WIRES  
WIRE .136 THRU ON .300 CENTERS, 33 WIRES, 1 EXTRA



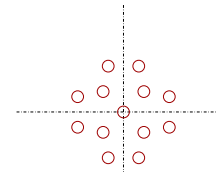
125-TT24 TC PAIRS  
WIRE .086 THRU ON .160 CENTERS, 125 WIRES, NO EXTRA



41-20AWG TSP WIRES  
WIRE .125 THRU ON .260 CENTERS, 41 WIRES, 3 EXTRA



13-RG59U COAX  
WIRE .192 THRU AS SHOWN 13 WIRES, 1 EXTRA



PAVE ORDERING PART # →

VS32L-AL-150-67-TE12-480-480

VS32L-AL-150-12-TE10-480-480

VS32L-AL-150-12SP-TT24-480-480

VIEW C-C

VS32L-AL-150-38TSP-TE20-480-480

VS32L-AL-150-12-RG59U-480-480

ITEM #	PART NUMBER	QTY
1	PAVE 0653	1
2	PAVE 0654	1
3	-213 O RING VITON	1
4	PAVESEAL 150 EPOXY	2600g
5	STRAIN RELIEF SC3057-32A	2
6	WIRE AS NOTED	



TITLE OR PAVE ORDER CODE

VS32L-AL-150-(SEE VIEW CC)

PART NUMBER  
0681

PROJECTION

