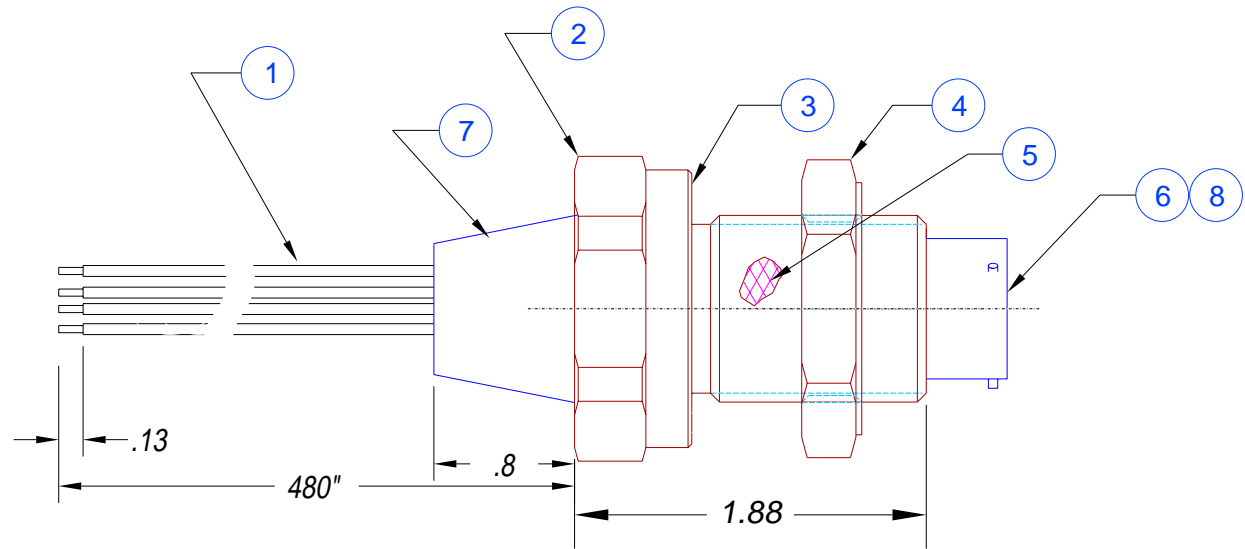
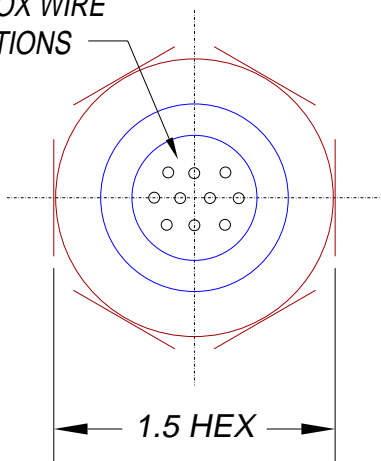


APPROX WIRE LOCATIONS



ITEM	QTY	PART NUMBER	DESCRIPTION
1	10	E20 UL1213	WIRE, TEFLON, 1 COLOR
2	1	0161	VS15L-SS HOUSING
3	1	-215 VITON	O-RING, 75 DUROMETER
4	1	0183	VS15-SS JAMNUT
5	A/R	PAVESEAL 150	EPOXY
6	1	SC3112E12-10P	BOX MNT RECEPT, PIN
7	A/R	CPC-19	URETHANE STRAIN RELIEF (OPTIONAL)
8	1	SC3126F12-10S	STRAIGHT PLUG, SOCKET, W/SR (NOT SHOWN)

NOTES:

1. HELIUM LEAK TEST: 1×10^{-6} CC/SEC, 30 MINUTES, RECORD EVERY 5.
2. CIRRUS TEST, 630 VDC, 500 MEGOHMS MIN, WIRE TO WIRE & HOUSING.
3. CONTINUITY CHECK, WIRES TO MATING CONNECTOR, 1 OHM MAX.

REF-P/N: VS15-L-SS-150-10-TE20-480-3112P

PAVE technology co.
 2751 Thunderhawk Court
 Dayton, Ohio 45414-3445
 U.S.A.
 (937)890-1100
 fax (937)890-5165
 www.pavetechnologyco.com

TITLE OR PAVE ORDER CODE
VS15L 10xTE20 480-3112P

PART NUMBER
1410

