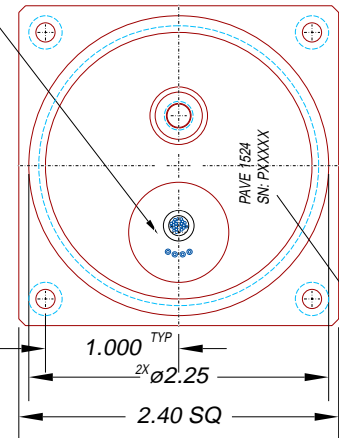


APPROXIMATE WIRE & CABLE EXIT LOCATIONS SEE NOTE 7



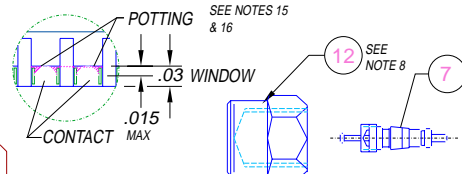
BERG CONNECTOR PINOUT TABLE (TP=TWISTED PAIR)
SEE NOTE 5 FOR L1 TOLERANCES, L2 LENGTHS ARE MINS

PIN	SIZE	COLOR/STRIPE	L1	L2	PIN	SIZE	COLOR/STRIPE	L1	L2
21	29	YELLOW	14.5	23	P1	COAX	WHITE	7.0	21
7	29	VIOLET	14.5	23	P2	COAX	WHITE/BLUE	7.5	21
8	29	GREEN	14.5	23	P3	COAX	WHITE/YELLOW	8.0	21
22	29	GRAY	14.5	23	P4	COAX	WHITE/BLACK	8.5	21
1	29	WHITE	14.5	23	19	29	ORANGE/WHITE	14.5	23
2	TP	BLUE	14.5	23	6	29	BROWN/WHITE	14.5	23
14	29	BROWN	14.5	23	20	29	BLACK/WHITE	14.5	23
15	TP	YELLOW/WHITE	14.5	23	5	29	GREEN/WHITE	14.5	23
11	29	BLACK	14.5	23	18	29	VIOLET/WHITE	14.5	23
16	29	RED	14.5	23	3	29	GRAY/WHITE	14.5	23
10	29	BLUE/WHITE	14.5	23	4	TP	BLUE/BLACK	14.5	23
24	29	ORANGE	14.5	23	17	29	GRAY/BLACK	14.5	23
23	29	YELLOW/BLACK	14.5	23	16	TP	RED/WHITE	14.5	23
12	29	VIOLET/BLACK	14.5	23	9	29	ORANGE/BLACK	14.5	23
13	29	RED/BLACK	14.5	23	25	29	GREEN/BLACK	14.5	23

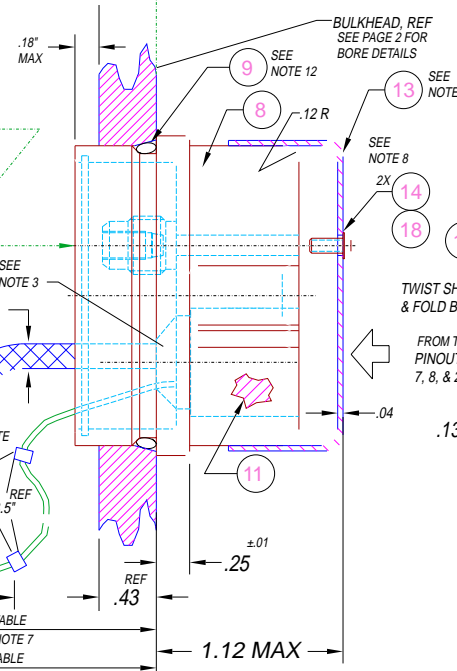
NOTES:

- HELIUM LEAK TEST, LESS THEN 1x10-6 CC/SEC @ 1 ATM.
- HYPOT TEST, 630 VDC, 500 MEGOHMS MIN, WIRE TO WIRES & HOUSING
- MESH TUBING TO BE EMBEDDED INTO COLLAR ON VALVE SIDE OF HOUSING.
- WIRES & CABLES POTTED IN URETHANE UNDER CAP AS STRAIN RELIEF.
- WIRE LENGTH TOLERANCE ±.25", INCLUDING COAX CABLE ON L1 SIDE OF ASSEMBLY.
- CONTINUITY TEST, 29 AWG WIRES AND CABLE SHIELDS < 1.0 OHMS, COAX CABLE CONDUCTOR < 1.6 OHMS.
- COAX CABLE AND BERG WIRE BUNDLE TO BE COILED IN HOUSING BODY AND COVERED WITH A PLASTIC CAP, SEE PAGE 2 FOR DETAILS.
- INSTALLATION TO BE DONE BY PAVE.
- EACH ASSEMBLY TO BE BAGGED, TAGGED, SEALED, & GIVEN A UNIQUE SERIAL NUMBER.
- CONTINUITY CHECK ITEM 15 TO ITEM 8, .010 OHMS MAX.
- CONTINUITY CHECK ITEM 13 TO ITEM 8, .010 OHMS MAX.
- ASSEMBLY TO SHIP WITH A CLEAN DRY O-RING PLACED IN BAG & NOT ON HOUSING, HOUSING TO BE CLEAN AND FREE OF LUBE BEFORE SHIPPING
- THERMAL SHOCK PER MIL STD 810C, QUALIFICATION TESTING ONLY, NOT DONE ON PRODUCTION UNITS.
- COLOR COAX MARKERS, ITEM 10, MUST BE PLACED WITHIN 1" OF CONNECTOR & 3" OF FREE END.
- NO POTTING MATERIAL ALLOWED IN "GOLD WINDOW" EXCEPT IN INDICATED WICKING AREA.
- ALL FOUR EDGES OF BERG CONNECTOR MUST BE ANCHORED IN POTTING FOR MECHANICAL RETENTION.

"GOLD WINDOW" DETAIL SCALE 4=1



ATMOSPHERE 20 PSI



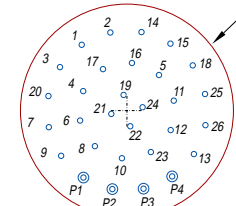
COLOR CODE TABLE

COLOR	x OR y	CLR OR STP
BROWN	1	BRN
RED	2	RED
ORANGE	3	ORG
YELLOW	4	YLV
GREEN	5	GRN
BLUE	6	BLU
VIOLET	7	VIO
GRAY	8	GRY
WHITE	9	WHT
BLACK	0	BLK

ITEM	QTY	ITEM NUMBER	ITEM DESCRIPTION
27	2	#820/C	WIRE TIE PLASTIC NATURAL 4"
26	A/R	1258-2	SLEAVING SILICONE WHITE .06 ID
25	4	SCL 1/8" BLK	TUBING SHRINK ADHESIVE POLYOLEFIN
18	A/R	1609	ADHESIVE THREAD ANAEROBIC
17	26	77138-101	TERMINAL 26-30AWG
15	A/R	TUBULAR BRD5/32	SHIELD BRAID 5/32 ID TINNED
14	2	1608-25	SCREW #4-40 x 1/4 BH SOC SS
13	1	1593	CAP EMI RTIS
12	1	1594	CAP VALVE RTIS MODIFIED
11	A/R	PAVE-Seal 150	EPOXY BLACK
10	2	M23053/5-102-0,-4,-6	TUBING HEAT SHRINK (BLK, YEL, BLU)
9	1	3-928 S604-70	O-RING S604-70
8	1	1567	HOUSING RTIS-AL
7	1	100AA	VALVE CORE PNEUMATIC TIRE
6	4	CXN 1556	CABLE COAXIAL 50 OHM .04 TEFLON
5	4	5807-5001-09	PLUG SMB RIGHT ANGLE
4a-4z	1	FEP #29 (CLR OR CLR/STP)	WIRE 29FEP RMA11-(xy) .004 51/.0016
3	A/R	664701352	SLEAVING EXPANDO FRDM .125ID
2	1	90311-026	RECEPTACLE DOUBLE-ROW KEYED 2x13
1	A/R	EN-1556 BLACK	POTTING STRAIN RELIEF URETHANE

ALL DIMENSIONS AND TOLERANCES APPLY TO FINISHED PART IN INCHES
ALLOWABLE TOLERANCES UNLESS SPECIFIED OTHERWISE: NONE +/- .5
.X DECIMAL +/- .1 .XX DECIMAL +/- .02 .XXX DECIMAL +/- .005
ANGLES +/- 1 DEG SURFACE FINISH 128 microinch RMS

WIRE LOCATIONS REF ONLY
SCALE 2=1 (INSIDE POTTING)



BASED ON RTIS PRINT & PINOUT FROM TABLE

PAVE technology CO.
2751 Thunderhawk Court
Dayton, Ohio 45414-3445
U.S.A.
(937)890-1100
fax (937)890-5165
www.pavetechnologyco.com

DESCRIPTION **PAVE-Seal® Cable Harnesses**
1567-AL-150-4/26-COAX/AW29-*

PART NUMBER **1524** PROJECTION