

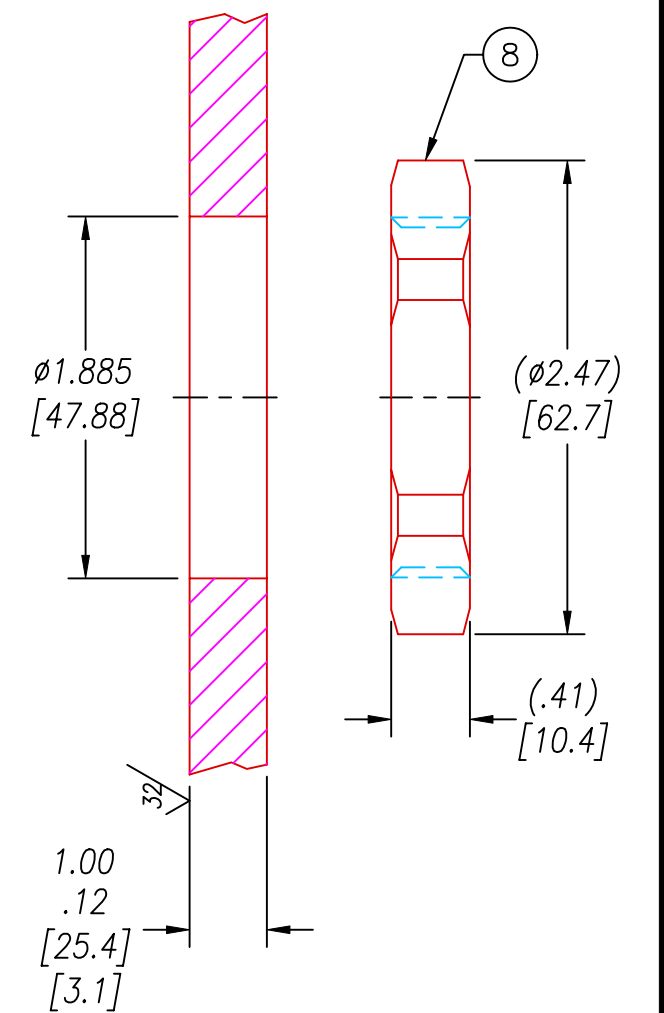
NOTES:

1. HE LEAK TEST @1 ATM. 10×10^{-9} CC/S OR LESS.
2. HYPOT 630 VDC 500 MΩ 0.01 SEC MINIMUM, WIRE TO WIRE & THREADS.
3. ALL TESTS ARE PERFORMED AT ROOM TEMPERATURE.
4. ALL PARTS MUST PASS ALL TESTS.
5. ITEMS 3 & 4 INCLUDED, NOT SHOWN.
6. ITEMS 3 & 4 NOT INCLUDED WITH 1583NP.
7. NO VOIDS ARE ACCEPTABLE ON O-RING SEALING SURFACES, VOIDS SMALLER THAN $\phi.035$ [.89] ARE ACCEPTABLE ON ALL OTHER SURFACES.
8. DIMENSIONS ARE INCHES [millimeters].

8	1	0185	NUT VS26-SS
7	A/R	PAVE-Seal 150	EPOXY BLACK
6	1	-226 VITON	O-RING -226 VITON 75A
5	1	0222	THREAD INSERT VS26-SS
4	1	SCP06PM28-21S (SEE NOTE 6)	PLUG 37 #16 BLUE INSERT ONLY SOC
3	1	SCP06PM28-21P (SEE NOTE 6)	PLUG 37 #16 BLUE INSERT ONLY PIN
2	1	SCP02PM28-21S	RCPT 37 #16 BLUE INSERT ONLY SOC
1	1	SCP02PM28-21P	RCPT 37 #16 BLUE INSERT ONLY PIN
ITEM	QTY	PART#	DESCRIPTION

ALL DIMENSIONS AND TOLERANCES APPLY TO FINISHED PART IN INCHES
 ALLOWABLE TOLERANCES UNLESS SPECIFIED OTHERWISE: NONE +/-0.5
 .X DECIMAL +/- 0.1 .XX DECIMAL +/- 0.02 .XXX DECIMAL +/-0.005
 ANGLES +/- 1 DEG SURFACE FINISH 128 microinch RMS

VS26 INSTALLATION PORT



2751 Thunderhawk Court
 Dayton, Ohio 45414-3445
 U.S.A.
 (937)890-1100
 fax (937)890-5165
 www.pavetechnologyco.com

PAVE technology co.

DESCRIPTION PAVE-Mate® I Connectors
 VS26-E-150-37-16-3102PS

PART NUMBER 1583

REVISION LEVEL E

PROJECTION