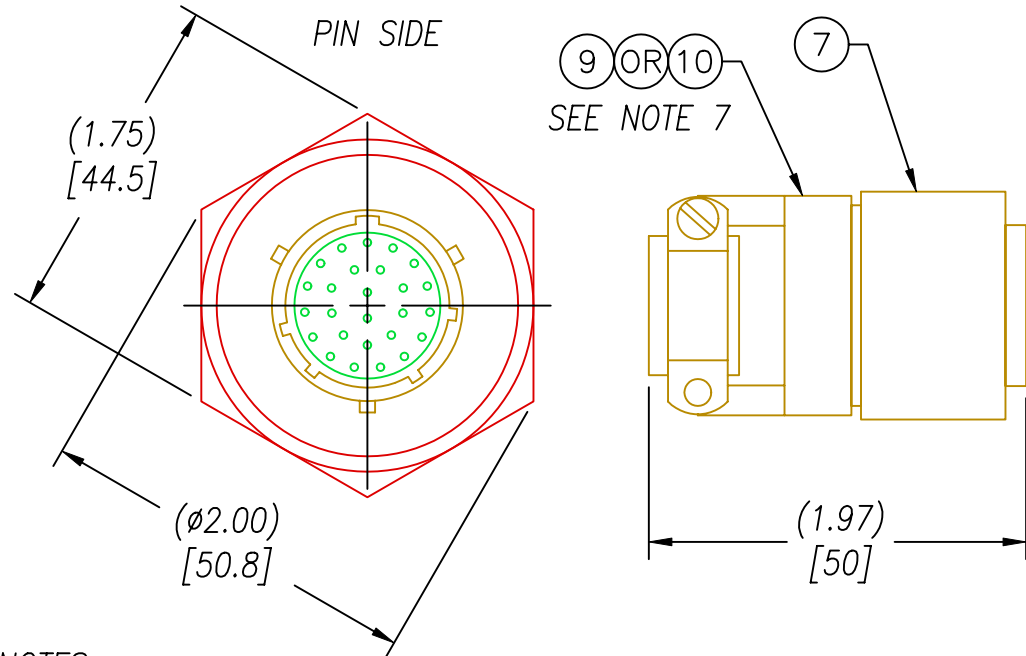
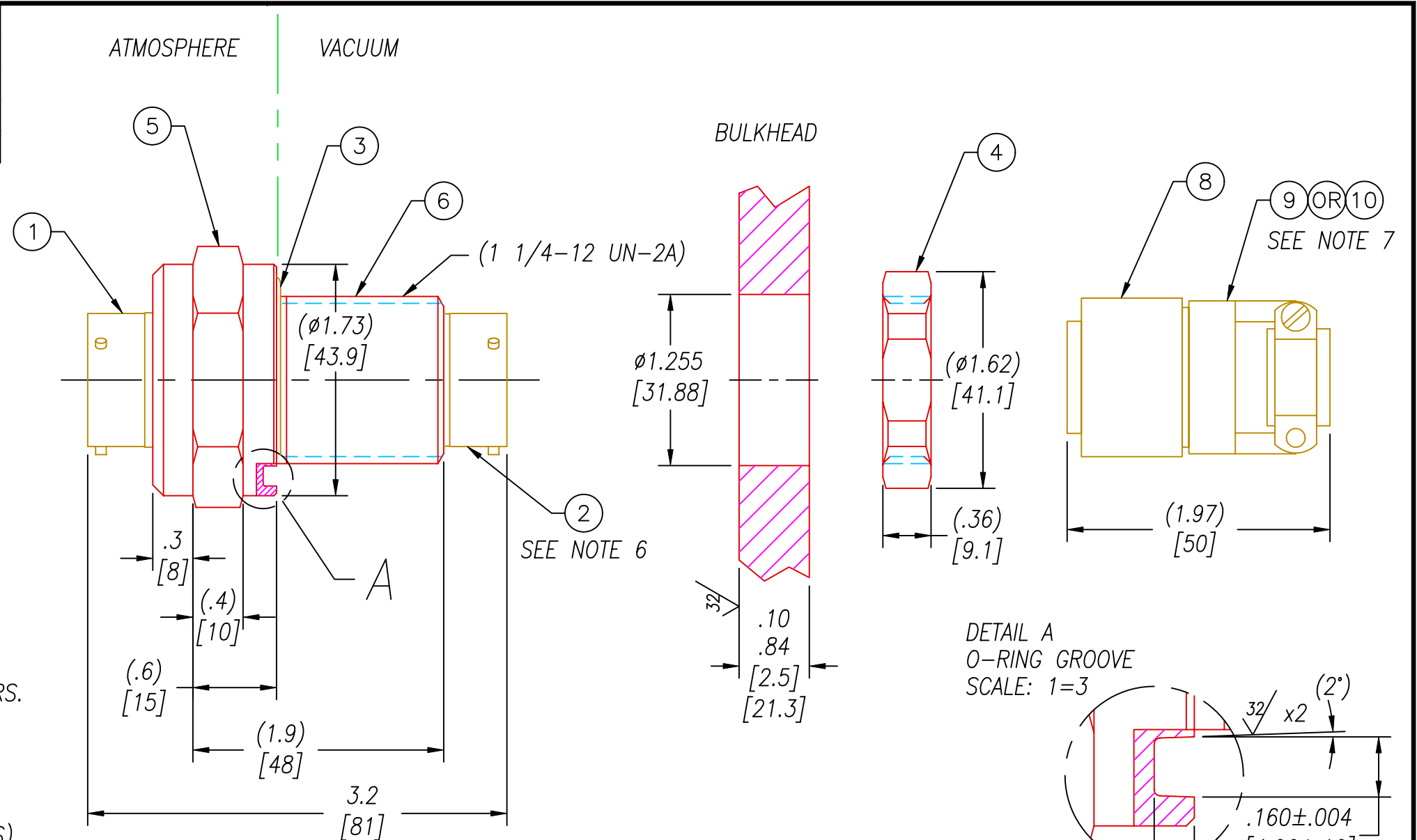


1637-R	VS18-E-150-26-20-3112 SP (CRIMP) (SEE NOTE 10)
1637-2	VS18-E-150-26-20-3112PS(90) RA PLUGS
1637-1	VS18-E-150-26-20-3112PS (CRIMP CONTACTS)
1637	VS18-E-150-26-20-3112PS (NO PLUGS)
PART#	DESCRIPTION



- NOTES:
- HE LEAK TEST @1 ATM.  $10 \times 10^{-8}$  CC/SEC OR LESS.
  - HYPOT 630 VDC 500 M $\Omega$  0.01 SEC MINIMUM W/MATING CONNECTORS.
  - ELECTRICAL CONTINUITY: <1 OHM PIN TO SOC.
  - ALL TESTS ARE PERFORMED AT ROOM TEMPERATURE.
  - ALL PARTS MUST PASS ALL TESTS.
  - REF. EPOXY INSERT IN ITEM 2 FOR LOWER OUTGASSING.
  - PART# 1637 DOES NOT INCLUDE ITEMS 7, 8, 9, OR 10 (NO PLUGS).  
PART# 1637-1 INCLUDES ITEMS 7, 8 & 10 FOR MATING PLUGS.  
PART# 1637-2 INCLUDES ITEMS 7, 8 & 9 FOR MATING PLUGS.  
PART# 1637-R INCLUDES ITEMS 7, 8 & 10 FOR MATING PLUGS.
  - THERMAL CYCLE 105°C TO -40°C 3 CYCLES 2HR. HOLD.
  - ONLY PART# 1637: THESE PARTS ARE CLEANED IN A 1,1,1 TRICHLOROETHYLENE VAPOR THEN PACKAGED IN A LAMINAR FLOW HOOD PROVIDING AN ISO CLASS 5 (CLASS 100) ENVIRONMENT WITHIN THE WORK AREA.
  - PART# 1637-R HAS ITEM# 2 ON ATMOSPHERE SIDE AND ITEM# 1 ON VACUUM SIDE (REVERSE PINS AND SOCKETS).
  - NO VOIDS ARE ACCEPTABLE ON O-RING SEALING SURFACES, VOIDS SMALLER THAN  $\phi$ .035 [.89] ARE ACCEPTABLE ON ALL OTHER SURFACES.
  - MAXIMUM PRESSURE 1500 PSI FROM HEX SIDE OR 200 PSI FROM THREAD SIDE.
  - DIMENSIONS ARE INCHES [millimeters].



10	SEE NOTE 7	M85049/52-16N	STRAIN RELIEF FOR AE776L16 & MS3476L16
9	SEE NOTE 7	M85049/51-1-16N	S/R RIGHT ANGLE 90 DEGREES
8	SEE NOTE 7	776L16-26P460	PLUG 26#20 PIN EPOXY INSERT CRIMP
7	SEE NOTE 7	MS3476L16-26S	PLUG 26#20 SOCKET CRIMP
6	1	0115	INSERT VS18-SS
5	A/R	PAVE-Seal 150	EPOXY BLACK
4	1	1014	NUT VS18-SS
3	1	-219 VITON	O-RING -219 VITON 75
2	1	771L16-26S460	RCPT 26 #20 SOCKET EPOXY INSERT
1	1	SC3112E16-26P	RCPT 26#20 PIN
ITEM	QTY	ITEM NUMBER	ITEM DESCRIPTION

ALL DIMENSIONS AND TOLERANCES APPLY TO FINISHED PART IN INCHES  
ALLOWABLE TOLERANCES UNLESS SPECIFIED OTHERWISE: NONE +/-0.5  
.X DECIMAL +/- 0.1 .XX DECIMAL +/- 0.02 .XXX DECIMAL +/-0.005  
ANGLES +/- 1 DEG SURFACE FINISH 128 microinch RMS

2751 Thunderhawk Court  
Dayton, Ohio 45414-3445  
U.S.A.  
(937)890-1100  
fax (937)890-5165  
www.pavetechnologyco.com

**PAVE technology co.**

DESCRIPTION PAVE-Mate I Connectors  
**VS18-E-150-26-20-3112PS**

PART NUMBER **1637**

REVISION LEVEL **R**

PROJECTION