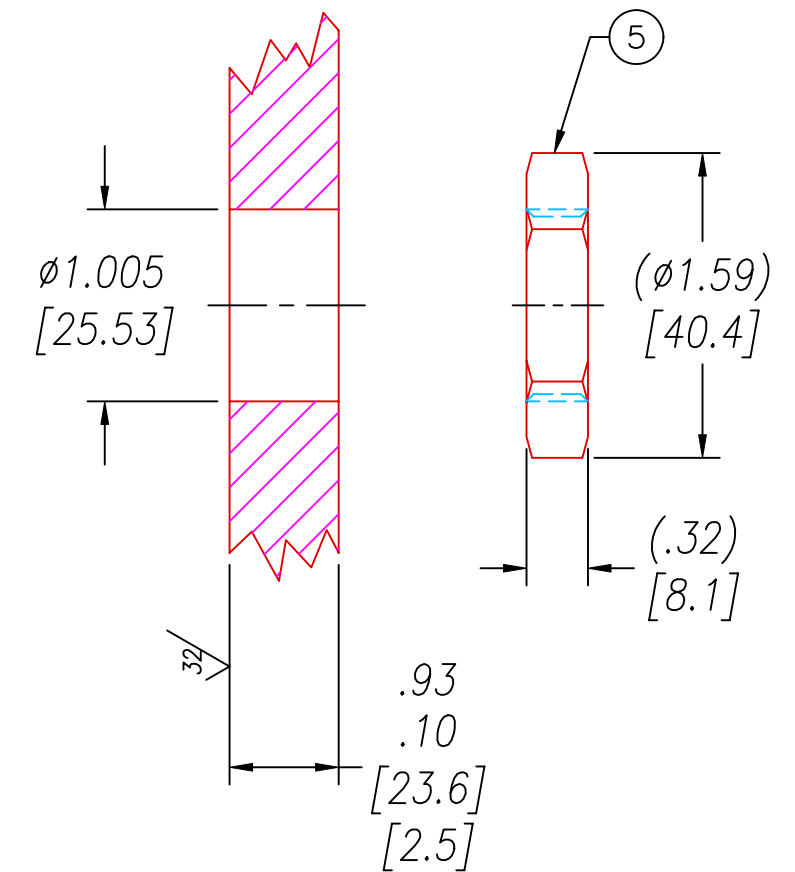


VS15L INSTALLATION PORT



NOTES:

1. HE LEAK TEST @1 ATM. 10×10^{-7} CC/S OR LESS.
2. HYPOT 630 VDC 500 M Ω 0.01 SEC MINIMUM, WIRE TO WIRE & HOUSING.
3. ALL TESTS ARE PERFORMED AT ROOM TEMPERATURE.
4. ALL PARTS MUST PASS ALL TESTS.
5. WIRES ARE NOT REQUIRED TO BEND SHARPLY AT EPOXY SEAL SURFACE.
6. WIRE POSITIONING IS APPROXIMATE & VARIABLE.
7. ENDSTRIP BOTH ENDS AS SHOWN FOR 1650-1.
8. DIMENSIONS ARE INCHES [millimeters].

WIRE LENGTH TABLE

PAVE #	X
1650	48 [1219]
1650-1	60 [1524]

ITEM	QTY	PART#	DESCRIPTION
5	1	0183	NUT VS15-SS
4	1	-215 VITON	O-RING -215 VITON 75
3	1	PAVE-Seal 150	EPOXY BLACK
2	1	TT20	CABLE T/C TYPE T #20 TEFLON FEP
1	1	0161	HOUSING VS15L-SS

ALL DIMENSIONS AND TOLERANCES APPLY TO FINISHED PART IN INCHES
 ALLOWABLE TOLERANCES UNLESS SPECIFIED OTHERWISE: NONE +/-0.5
 .X DECIMAL +/- 0.1 .XX DECIMAL +/- 0.02 .XXX DECIMAL +/-0.005
 ANGLES +/- 1 DEG SURFACE FINISH 128 microinch RMS

PAVE technology co.
 2751 Thunderhawk Court
 Dayton, Ohio 45414-3445
 U.S.A.
 (937)890-1100
 fax (937)890-5165
 www.pavetechnologyco.com

DESCRIPTION PAVE-Seal Cable Harnesses
VS15L-SS-150-9P-TT20-X-X

PART NUMBER **1650**

REVISION LEVEL **F**

PROJECTION