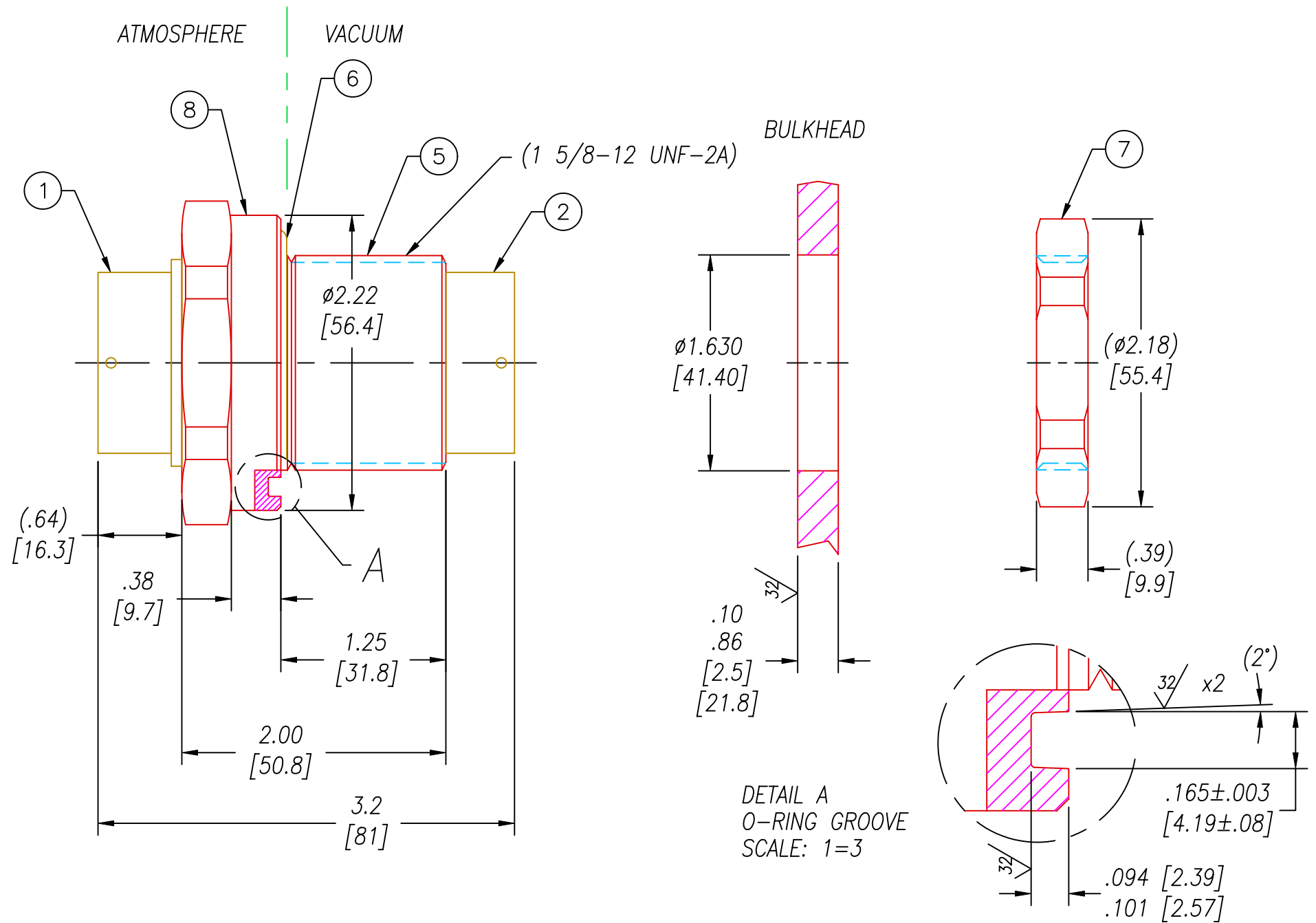
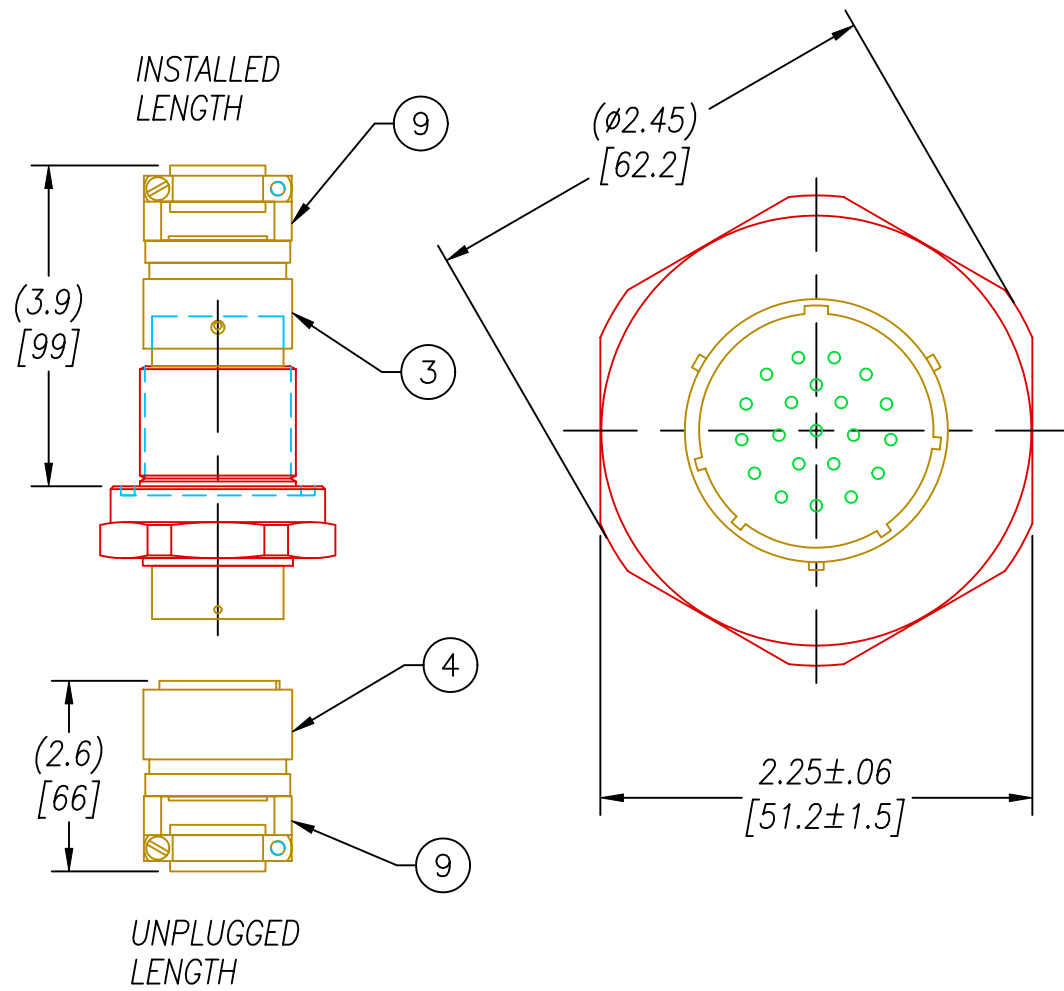


SCALE 1=2



NOTES:

1. HE LEAK TEST @1 ATM.  $10 \times 10^{-9}$  CC/S OR LESS.
2. HYPOT 630 VDC 500 MΩ 0.01 SEC MINIMUM, PIN TO PIN W/ MATING PLUGS.
3. ALL TESTS ARE PERFORMED AT ROOM TEMPERATURE.
4. ALL PARTS MUST PASS ALL TESTS.
5. NO VOIDS ARE ACCEPTABLE ON O-RING SEALING SURFACES, VOIDS SMALLER THAN  $\phi.035$  [.89] ARE ACCEPTABLE ON ALL OTHER SURFACES.
6. DIMENSIONS ARE INCHES [millimeters].
7. (NP) AT THE END OF THE DESCRIPTION SHALL INDICATE NO PLUGS. ITEMS 3, 4 & 9 ARE NOT INCLUDED WITH 1667NP.

9	2	M85049/52-1-22N	S/R FOR MS3476L22-21P & 21S
8	A/R	PAVE-Seal 150	EPOXY BLACK
7	1	0199	NUT VS22-SS (316SS)
6	1	-224 VITON	O-RING -224 VITON 75A
5	1	0225	THREAD INSERT VS22-SS
4	1	MS3476L22-21S	PLUG 21 #16 SOCS CRIMP 26482 SERIES II
3	1	776L22-21P460	PLUG 21#16 PIN EPOXY INSERT CRIMP
2	1	771L22-21S460	RCPT 21#16 EPOXY INSERT SOCKET
1	1	SC3112E22-21P	RCPT 21 #16 PINS
ITEM	QTY	PART#	DESCRIPTION

ALL DIMENSIONS AND TOLERANCES APPLY TO FINISHED PART IN INCHES  
 ALLOWABLE TOLERANCES UNLESS SPECIFIED OTHERWISE: NONE +/-0.5  
 .X DECIMAL +/- 0.1 .XX DECIMAL +/- 0.02 .XXX DECIMAL +/-0.005  
 ANGLES +/- 1 DEG SURFACE FINISH 128 microinch RMS

**PAVE technology co.**  
 2751 Thunderhawk Court  
 Dayton, Ohio 45414-3445  
 U.S.A.  
 (937)890-1100  
 fax (937)890-5165  
 www.pavetechnologyco.com

DESCRIPTION **PAVE-Mate® I Connectors**  
**VS22-E-150-21-16-3112PS**

PART NUMBER **1667** REVISION LEVEL **E**  
 PROJECTION