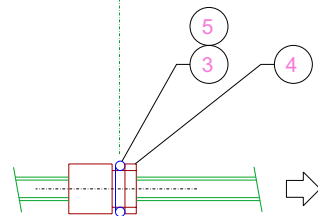
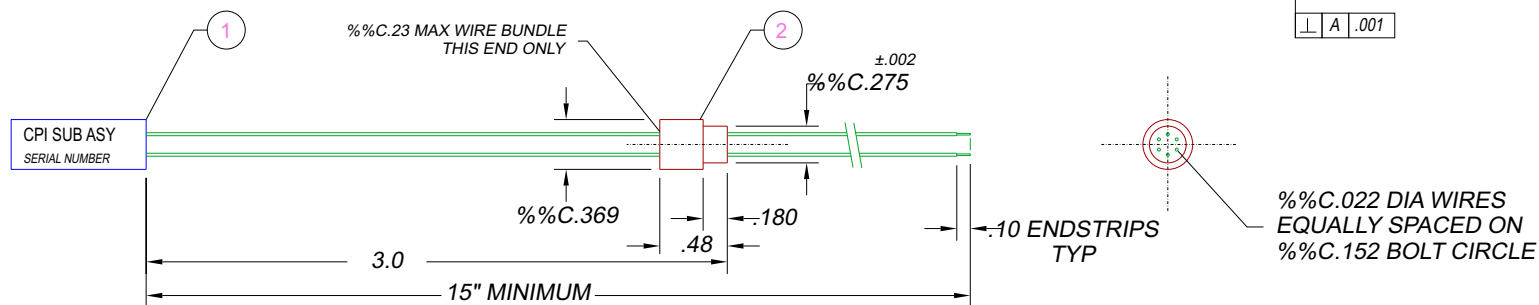
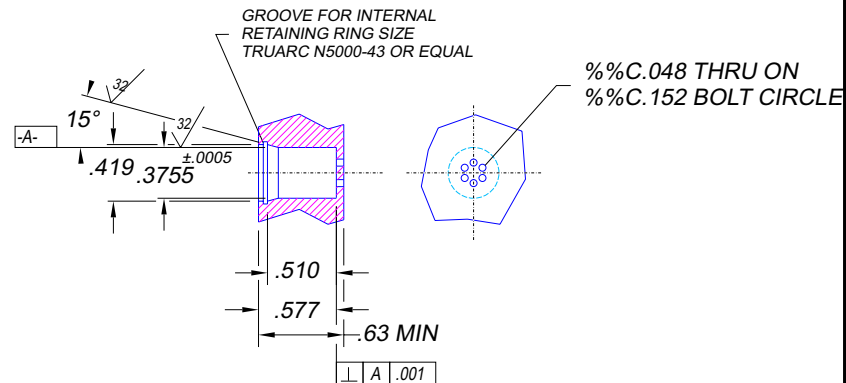


PRESSURE      ATMOSPHERE



**INSTALLATION / LEAK TEST PORT**



- NOTES:**
- DO NOT HYPOT TEST. RESISTANCE TEST @ 12 VDC MAX  
BROWN TO YELLOW = 69 OHMS REF  
BLACK TO GREEN = 56 OHMS REF  
RED TO BLUE = 56 OHMS REF  
RESISTANCES BEFORE & AFTER POTTING SHALL DIFFER BY NO MORE THAN +.8/-1.2 OHM.
  - THERMAL CYCLE TEST: -40°F TO 250°F, 3 CYCLES MIN, 1 HOUR HOLD AT TEMP. DO BEFORE ALL OTHER TESTS.
  - LEAK TEST: 10000 PSI, NO BUBBLES 2 MINUTES MIN.
  - ALL LEAK & ELECTRICAL TESTS ARE DONE AT ROOM TEMPERATURE.
  - THESE SPECIFICATIONS SUPERSEDE PAVE CATALOG.
  - PACKAGE WITH SERIALIZED BOX AND CERTS.

5	A/R	SUPER O-LUBE	LUBRICANT O-RING SILCONE BASED
4	1	B/U RING -010	BACK UP RING -010 TEFLON SINGLE TURN
3	1	-010 VITON	O-RING -010 VITON 75
2	A/R	PAVE-SEAL 150	EPOXY BLACK
1	1	CPI SUB ASY	SENSOR W/6 #32AWG TEFLON ET WIRES
ITEM	QTY	PART#	DESCRIPTION

ALL DIMENSIONS AND TOLERANCES APPLY TO FINISHED PART IN INCHES  
ALLOWABLE TOLERANCES UNLESS SPECIFIED OTHERWISE: NONE +/- .5  
.X DECIMAL +/- .1 .XX DECIMAL +/- .02 .XXX DECIMAL +/- .005  
ANGLES +/- 1 DEG SURFACE FINISH 128 microinch RMS



DESCRIPTION PAVE-Seal® Cable Harnesses  
**SP6X-E-150-6-TET32-3SA-12**

PART NUMBER	PROJECTION
<b>1973</b>	