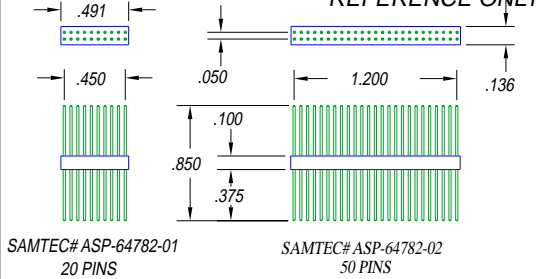


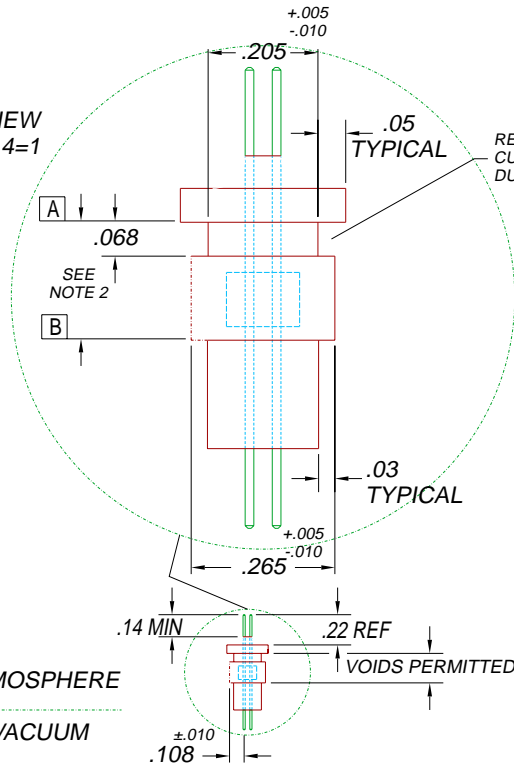
**SAMTEC TERMINALS  
REFERENCE ONLY**



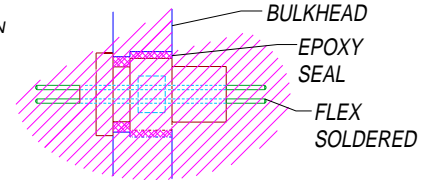
SAMTEC# ASP-64782-01  
20 PINS

SAMTEC# ASP-64782-02  
50 PINS

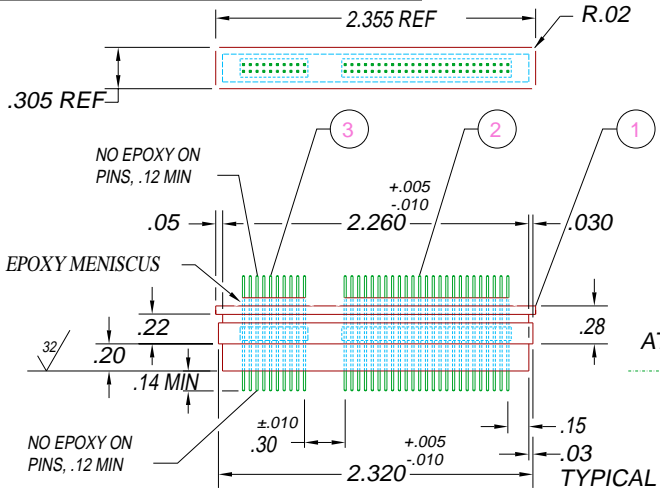
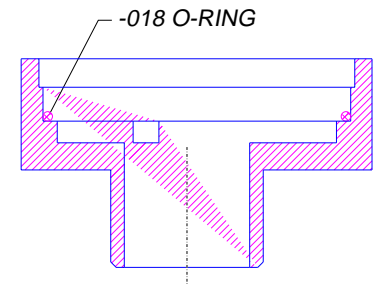
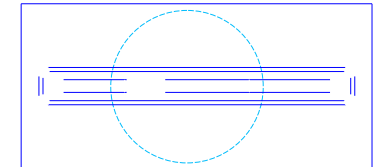
**SIDE VIEW  
SCALE 4=1**



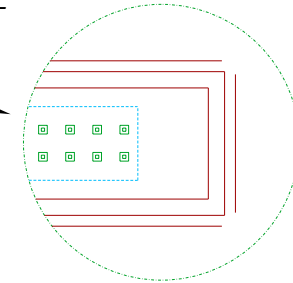
**CUSTOMER INSTALLATION  
SCALE 2=1**



**LEAK TEST PORT**  
REF- O-RING CIRCUMFERENCE IS APPROX 2.28x .070w  
TOP VIEW SHOWN WITHOUT O-RING IN PLACE  
SEE NOTE 1



**BOTTOM VIEW  
SCALE 4=1**



- NOTES:**
- HE LEAK TEST @1 ATM. <math>10^{-7}</math> CC/S AIR EQUIVALENT. (AIR EQUIVALENT LEAK RATE/2.73 = ACTUAL He LEAK RATE)
  - HYPOT 630 VDC 500 MEGOHMS .01 SEC MINIMUM, PIN TO PIN & HOUSING (PUT ALUMINUM FOIL OVER A TO B)
  - VERSION PAVE ITEM# 1998-AL  
DESCRIPTION TBL-AL-150-50/20-SAMTEC
  - ALL TESTS ARE DONE AT ROOM TEMPERATURE.
  - THESE SPECIFICATIONS SUPERSEDE PAVE CATALOG.

3	1	ASP-64782-02	HEADER 20 PIN 2 ROW .050" CENTERS
2	1	ASP-64782-01	HEADER 50 PIN 2 ROW .050" CENTERS
1	1	PAVE SEAL 150	EPOXY BLACK
ITEM	QTY	PART#	DESCRIPTION

ALL DIMENSIONS AND TOLERANCES APPLY TO FINISHED PART IN INCHES  
ALLOWABLE TOLERANCES UNLESS SPECIFIED OTHERWISE: NONE +/- .5  
.X DECIMAL +/- .1 .XX DECIMAL +/- .02 .XXX DECIMAL +/- .005  
ANGLES +/- 1 DEG SURFACE FINISH 128 microinch RMS

**PAVE Technology Co.**  
2751 Thunderhawk Court  
Dayton, Ohio 45414-3445  
U.S.A.  
(937)890-1100  
fax (937)890-5165  
www.pavetechnologyco.com

DESCRIPTION  
**TBL-E-150-50/20-SAMTEC**

PART NUMBER  
**1998**

