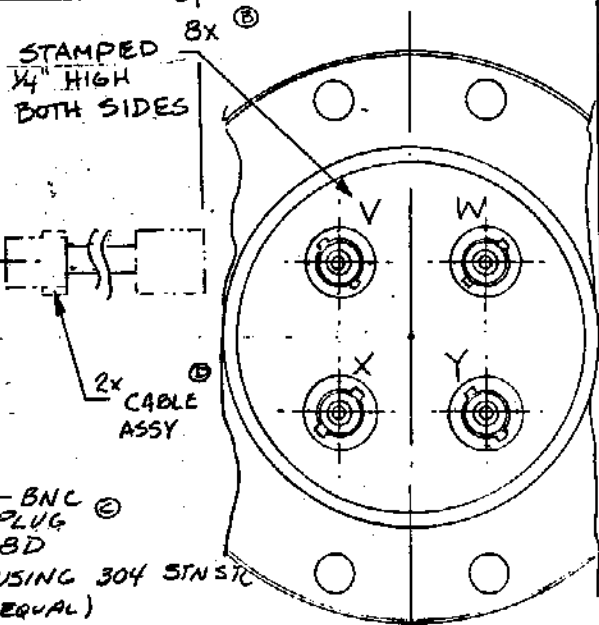
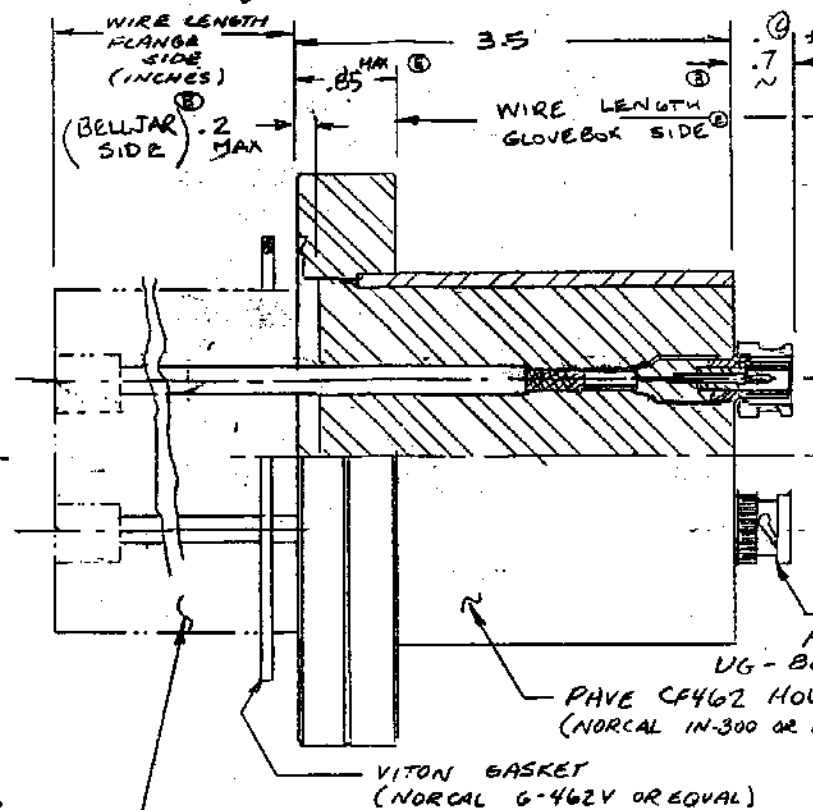
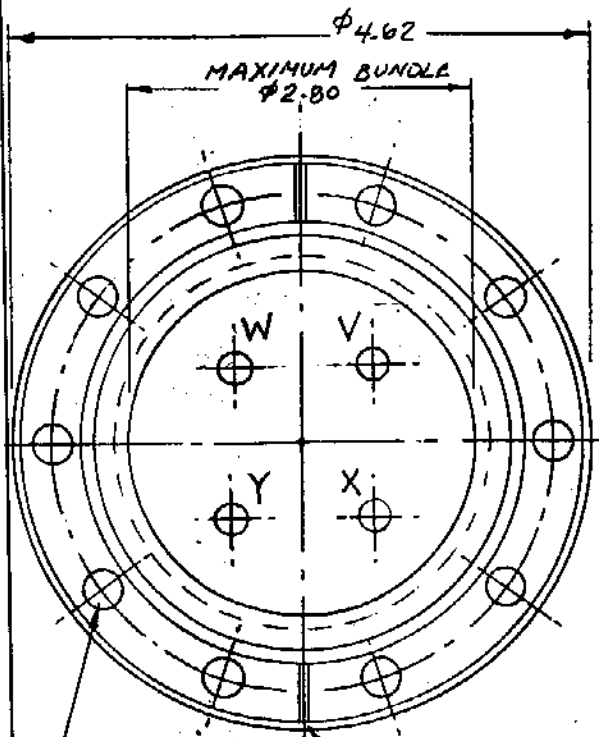


DO NOT SCALE PRINT

ISSUE SET	ALTERATIONS	DATE
A	4.050 WAYS 4-050 TYPE ERROR	11/8/79
B	ADDED BELLJAR/GLOVEBOX ACCESS & STAMPED I.D.	1/24/79
C	ADDED TAG ENH. REVISED BNC RECEPT TO PLUG & NO RESMNT	12/1/78
D	ADDED EX CABLE ASST & GLOVEBOX LEAKING - REVISED TAG WAYS & TAG ENH. MAX. 1.05 MAX. 300V WERE LEAK TUBE, RES. 650V, ...	1/24/79
E		4/20/79



10x ϕ .310 THRU ON ϕ 4.050 BOLT CIRCLE
 .06 WIDE X .03 DP SLOT (SNIFF PORT)

WIRES - CUSTOMER SPECIFICATIONS

CF462	SS	TEMPERATURE RATING 150° or 200° C	NUMBER OF WIRES	WIRE PART NO.	WIRE LENGTH FLANGE SIDE	BNC
-------	----	-----------------------------------	-----------------	---------------	-------------------------	-----

3. TAG-EN-T345-310-1-E

REF: SCD# 8244.025-1503-1551
 PO # 10214
 SCD V.P.I.M.F. 2R6
 NOTE -

- ORDERING CODE
- DIELECTRIC TEST - 100% 300 VDC @ 100 M.S.L. MIN. CONDUCTANCE RESISTANCE THRESHOLD 1 KR MAX.
 - LEAK TEST UNITS - 100%
 - BUBBLE TEST 80 PSIG FLANGE SIDE - 1 MINUTE. NO VISIBLE BUBBLES WITH TUBE END SUBMERGED - OR -
 - HELIUM LEAK TEST - (BAG TUBE END IN 90% He MIN) MAX 1×10^{-8} cc/sec

SEAL

FINISH

PAVE Technology Co.
 Pressure and Vacuum Electronics
 Custom Hermetic Connectors

TITLE: CF462 - WIRE/BNC PASSTHRU

MATERIAL: NOTED

DR. BY: HLL APPROVED BY: [Signature] DRAWN FROM: [Signature]

CHK BY: WW DATE: 10/25/79 SCALE: 1/1

PART NUMBER: 0251

ALL DIM AND TOLERANCES APPLY TO FINISHED PART UNLESS OTHERWISE SPECIFIED.
 ALL DIMENSIONS UNLESS OTHERWISE SPECIFIED:
 XX DECIMALS ±.1 XX DECIMALS 2.05 TO 2.0X X DECIMALS ±.05 ANGLES ±.1°