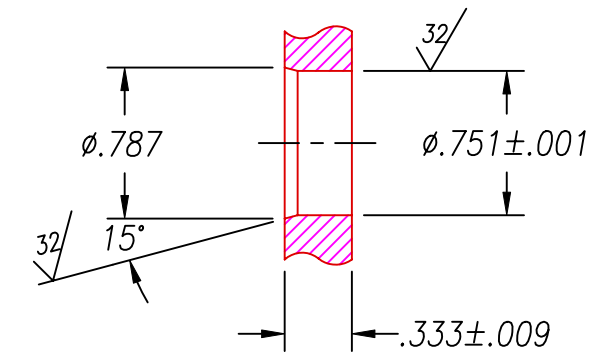


SPF12 INSTALLATION PORT



RECOMMENDED RETAINING RING  
TRUARC #5100-75 OR EQUAL

NOTES:

1. HE LEAK TEST @1 ATM.  $10 \times 10^{-8}$  CC/S OR LESS. CLEAN O-RING WITH METHANOL BEFORE INSERTING INTO TEST PORT.
2. HYPOT 630 VDC 500 MΩ 0.01 SEC MINIMUM, CENTER CONDUCTOR TO SHIELDING USING MATING CONNECTORS. 5 KVDC HYPOT TEST WITH 5 μA MAXIMUM LEAKAGE CENTER CONDUCTOR TO LEAK TEST PORT.
3. ALL TESTS ARE DONE AT ROOM TEMPERATURE & HUMIDITY.
4. ALL PARTS MUST PASS ALL TESTS.
5. O-RING TO BE SHIPPED DRY, NO O-LUBE ALLOWED.
6. CONTINUOUS CONTACT OF METHANOL TO VITON O-RING WILL CAUSE O-RING TO SWELL AND NOT SEAL PROPERLY.
7. "PAVE" & "2808" MARKINGS APPROXIMATELY AS SHOWN.
8. CONTINUITY TEST FROM END TO END OF MATING CONNECTORS. CENTER CONDUCTOR < 0.17 Ω, SHIELDING < 19 mΩ.
9. LABEL W/"LIN DET SIG", "1017880/D", "PAV".
10. LABEL W/INFORMATION SPECIFIED, ALL LABELS TO BE INSTALLED SO THAT ALL INFORMATION ON LABEL IS VISIBLE.
11. PACKAGE ASSEMBLY INDIVIDUALLY IN A PLASTIC BAG AND INCLUDE "1017880 REV:D" ON BAG LABEL.
12. NO VOIDS ARE ACCEPTABLE ON O-RING SEALING SURFACES, VOIDS SMALLER THAN 0.035 ARE ACCEPTABLE ON ALL OTHER SURFACES.

WIRING CHART	
ITEM 5-COND	ITEM 4-COND
ITEM 5-SHIELD	ITEM 4-SHIELD
FROM	TO

ITEM	QTY	PART#	DESCRIPTION
8	1	0506229188310	CONNECTOR SMA MALE ITT CANNON
7	1	AMP #221128-1	CONNECTOR BNC MALE
6	2	-	PRINTABLE LABEL
5	1	RG142B/U	CABLE COAX 18AWG SOLID CONDUCTOR
4	1	RG316 M17/113	B84316 OR EQ BELDEN 84316
3	1	-016 VITON	O-RING -016 VITON 75
2	A/R	PAVE-Seal 150	EPOXY BLUE
1	1	0130	HOUSING SPF12-E

ALL DIMENSIONS AND TOLERANCES APPLY TO FINISHED PART IN INCHES  
 ALLOWABLE TOLERANCES UNLESS SPECIFIED OTHERWISE: NONE +/-0.5  
 .X DECIMAL +/- 0.1 .XX DECIMAL +/- 0.02 .XXX DECIMAL +/-0.005  
 ANGLES +/- 1 DEG SURFACE FINISH 128 microinch RMS

2751 Thunderhawk Court  
Dayton, Ohio 45414-3445  
U.S.A.  
(937)890-1100  
fax (937)890-5165  
www.pavetechnologyco.com

**PAVE technology co.**

DESCRIPTION PAVE-Seal Cable Harnesses  
SPF12-E-150-1-RG142/RG316-6-18

PART NUMBER **2808**

REVISION LEVEL **D**

PROJECTION