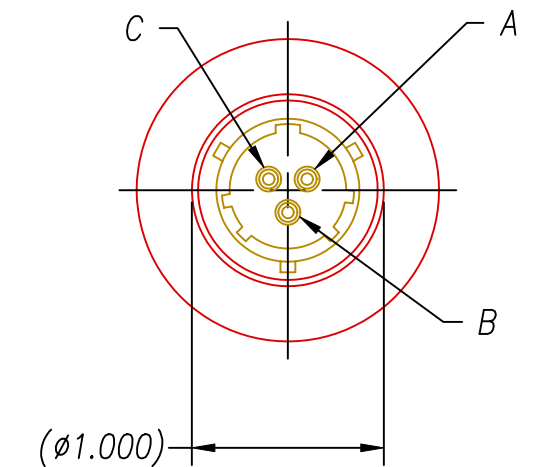


NOTE:
WIRES ARE IN POSITIONS A & C, POSITION B IS NOT USED.



NOTES:

1. HE LEAK TEST @1 ATM. 10×10^{-7} CC/S OR LESS.
2. HYPOT 630 VDC 500 MΩ 0.01 SEC MINIMUM, PIN TO WIRE & HOUSING.
3. ALL TESTS ARE PERFORMED AT ROOM TEMPERATURE.
4. ALL PARTS MUST PASS ALL TESTS.
5. WIRE POSITIONING IS APPROXIMATE & VARIABLE.
6. WIRES ARE NOT REQUIRED TO BEND SHARPLY AT EPOXY SEAL SURFACE.

5	1	E16 RED	WIRE 16E MIL-W-16878/4 .010 19/#29
4	1	E16 BLACK	WIRE 16E MIL-W-16878/4 .010 19/#29
3	A/R	PAVE-Seal 150	EPOXY BLACK
2	1	SC3112E12-3P	RCPT 3112 SHELL 12 3#16
1	1	3261	HOUSING VACUUM FLANGE NW25-SS
ITEM	QTY	PART#	DESCRIPTION

ALL DIMENSIONS AND TOLERANCES APPLY TO FINISHED PART IN INCHES
 ALLOWABLE TOLERANCES UNLESS SPECIFIED OTHERWISE: NONE +/-0.5
 .X DECIMAL +/- 0.1 .XX DECIMAL +/- 0.02 .XXX DECIMAL +/-0.005
 ANGLES +/- 1 DEG SURFACE FINISH 128 microinch RMS

2751 Thunderhawk Court
Dayton, Ohio 45414-3445
U.S.A.
(937)890-1100
fax (937)890-5165
www.pavetechnologyco.com

PAVE technology co.

DESCRIPTION PAVE-Mate II Connectors
NW25-SS-150-2-TE16-6-3112E12

PART NUMBER 3224

REVISION LEVEL -

PROJECTION