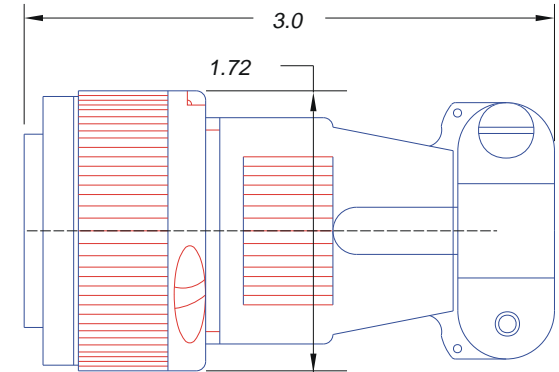
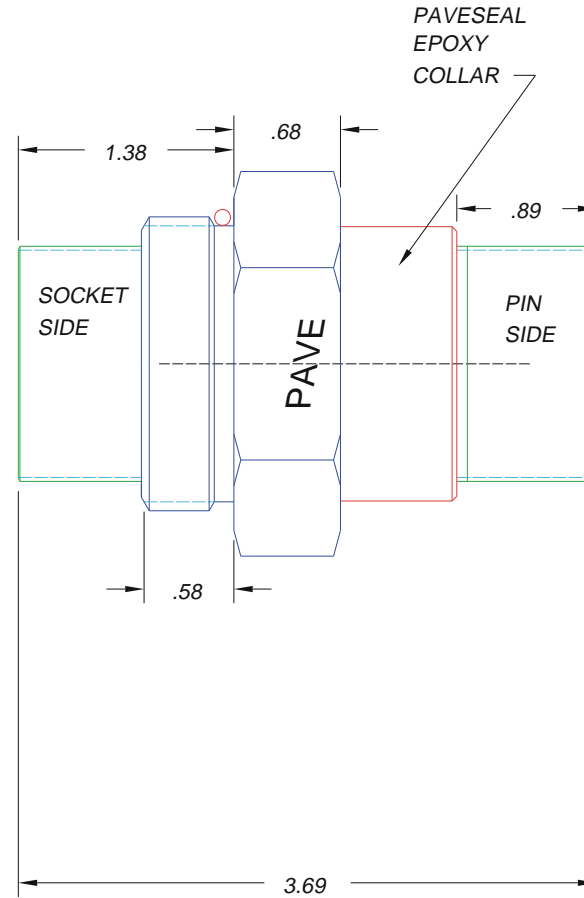
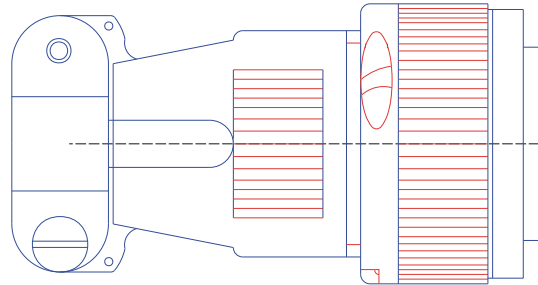
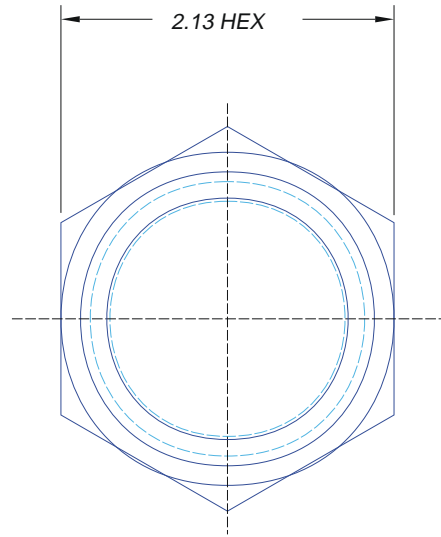


REFERENCE VIEW,  
INSERT OMITTED

← LEAK TEST  
1500 PSI  
MAX



NOTES:

1. LEAK TEST: 1500 PSI N , HEX SIDE, NO VISIBLE BUBBLES FOR 2 MINUTES.
2. ELECTRICAL TEST: HYPOT CHECK UNIT, 630 VDC, 500 Mohms MIN.

TITLE OR PAVE ORDER CODE

SO26-SS-150-12-12-5015PS

PART NUMBER

0641

PROJECTION

