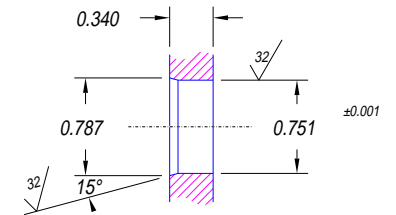


INSTALLATION PORT
USE TRUARC RETAINING RING 5100-75 OR EQUAL



NOTES:

1. HE LEAK TEST @1 ATM. 10^{-6} CC/S.
2. HYPOT 1000 VDC 100 MW 0.01 SEC MINIMUM, WIRE TO WIRE.

QUALIFICATION ONLY: 1500 VAC 5mA MAXIMUM LEAKAGE.

3. ALL TESTS ARE PERFORMED AT ROOM TEMPERATURE.
4. PERCENTAGE OF PARTS TESTED WILL BE 100% (MAY BE

A LESSER PERCENTAGE FOR LARGE PRODUCTION QUANTITIES, UNLESS OTHERWISE NOTED OR REQUIRED).

5. WIRES ARE NOT REQUIRED TO BEND SHARPLY AT EPOXY

SEAL SURFACE.

6. NO VOIDS LARGER THAN %C0.035 ARE ACCEPTABLE.

7. WIRE COLOR POSITIONS ARE APPROXIMATE AND VARIABLE.

13	1	EE20 MIL ORG	WIRE 20EE MIL-W-16878/5 7/#28
12	1	EE20 MIL YELLOW	WIRE 20EE MIL-W-16878/5 7/#28
11	1	EE20 MIL BROWN	WIRE 20EE MIL-W-16878/5 7/#28
10	1	EE20 MIL GREEN	WIRE 20EE MIL-W-16878/5 7/#28
9	1	EE20 MIL BLUE	WIRE 20EE MIL-W-16878/5 7/#28
8	1	EE14 RED	WIRE 14EE MIL-W-16878/5 19/#27
7	1	EE14 WHITE	WIRE 14EE MIL-W-16878/5 19/#27
6	1	EE14 BLACK	WIRE 14EE MIL-W-16878/5 19/#27
5	1	KT20	CABLE T/C TYPE K 20 AWG TEFLON
4	A/R	PAVE-Seal 200	EPOXY BLACK HI-TEMP
3	A/R	SUPER O-LUBE	LUBRICANT O-RING SILICONE BASED
2	1	-016 BUNA	O-RING -016 BUNA 75
1	1	0130 SPF12	HOUSING SPF12-E
ITEM	QTY	PART#	DESCRIPTION

ALL DIMENSIONS AND TOLERANCES APPLY TO FINISHED PART IN INCHES
ALLOWABLE TOLERANCES UNLESS SPECIFIED OTHERWISE: NONE +/-0.5
X DECIMAL +/- 0.1 .XX DECIMAL +/- 0.02 .XXX DECIMAL +/-0.005
ANGLES +/- 1 DEG SURFACE FINISH 128 microinch RMS



DESCRIPTION PAVE-Seal® Cable Harnesses

SPF12-E-200-3/5/1P-TEE14/20/KT20-12-48

PART NUMBER
2784

REVISION
LEVEL
-

PROJECTION