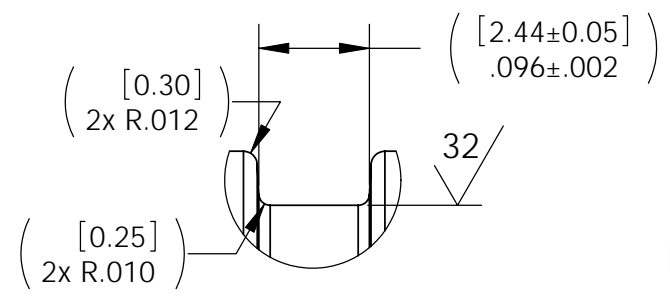
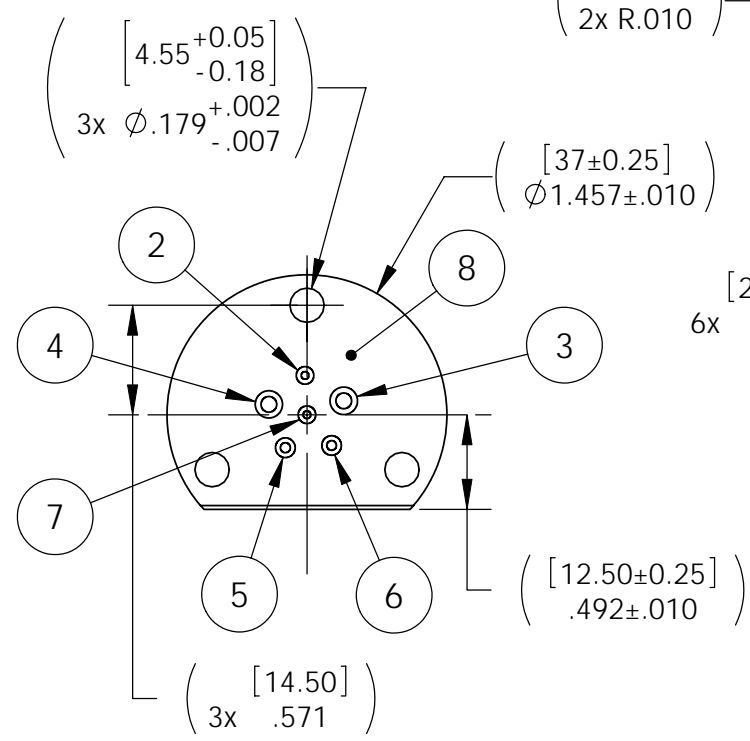


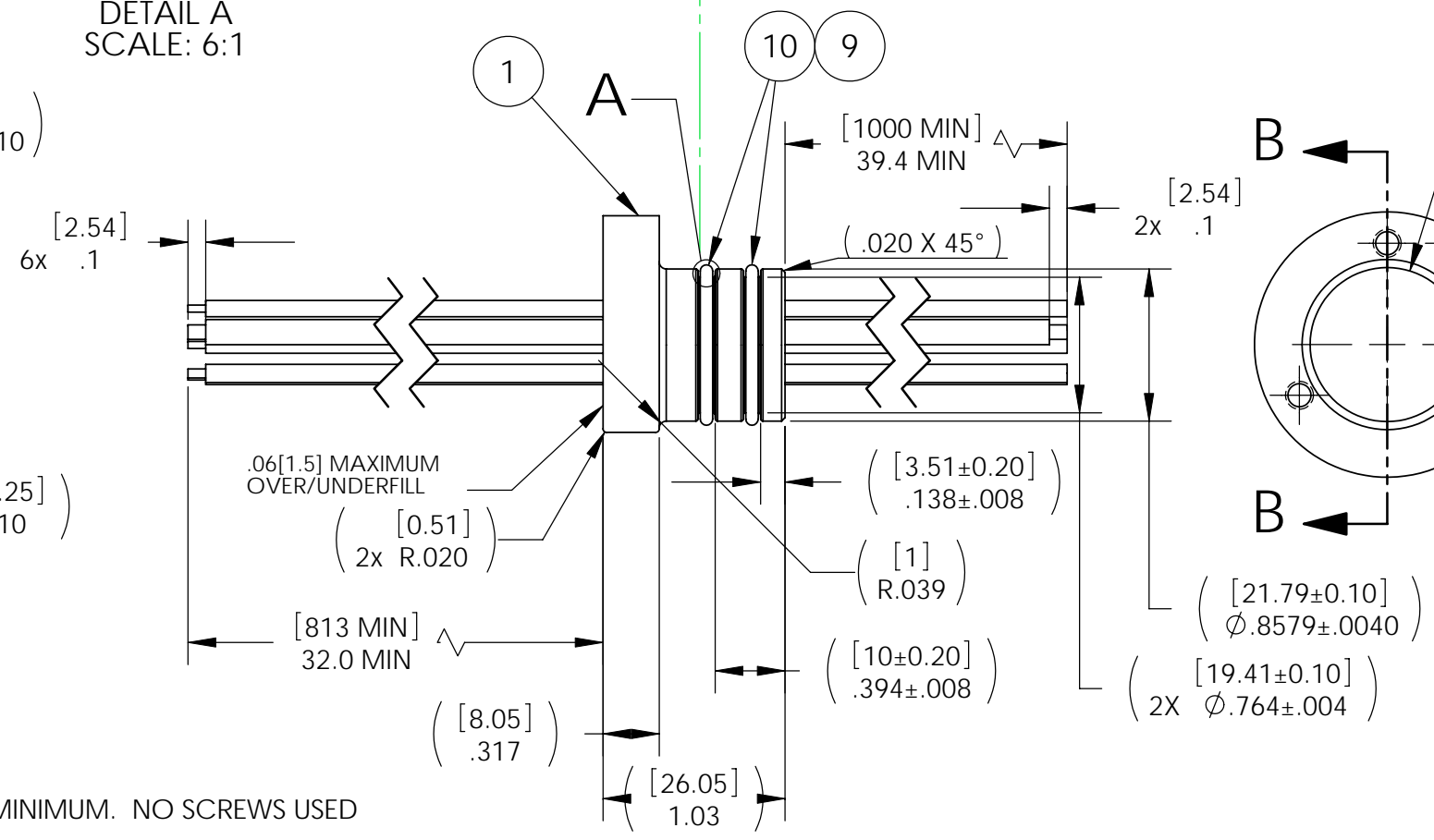
O-RING NOT SHOWN
DIMENSIONS EQUAL FOR EACH GROOVE



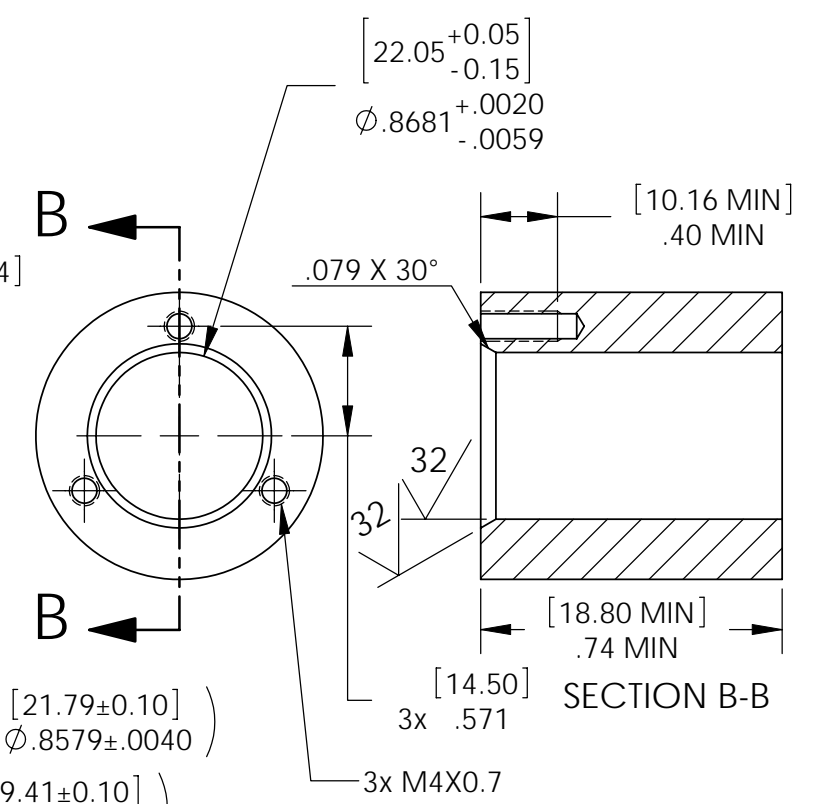
DETAIL A
SCALE: 6:1



PRESSURE ATMOSPHERE



SP14 INSTALLATION PORT



NOTES:

1. LEAK TEST: 315 PSI, NO BUBBLES 1 MINUTES MINIMUM. NO SCREWS USED DURING PRODUCTION TESTING.
2. QUALIFICATION ONLY: 1563 PSI, NO BURST, 1 MINUTE MINIMUM. SCREWS USED DURING QUALIFICATION TEST.
3. QUALIFICATION ONLY: HE LEAK TEST VACUUM 10X10⁻⁷ CC/SEC OR LESS.
4. HYPOT 630 VDC 500 MEGOHMS MINIMUM 0.01 SECOND MINIMUM WIRE TO WIRE.
5. ALL TESTS ARE PERFORMED AT ROOM TEMPERATURE.
6. ALL PARTS MUST PASS ALL TESTS.
7. WIRE POSITIONING IS APPROXIMATE & VARIABLE.
8. NO VOIDS ARE ACCEPTABLE ON O-RING SEALING SURFACES, VOIDS SMALLER THAN Ø0.035 ARE ACCEPTABLE ON ALL OTHER SURFACES.
9. DIMENSION IS OVER-ALL-LENGTH EXCLUDING OVERFILL ON ATMOSPHERE SIDE OF HOUSING.
10. REF-OPERATING TEMPERATURE -40 °C TO 125 °C.
11. REF-PARTS ARE DEFLASHED ON PARTING LINE +0.005 MAXIMUM.
12. DIMENSIONS ARE INCHES[MILLIMETERS].

10	A/R	PARKER O-LUBE	LUBRICANT O-RING BARIUM BASED
9	2	-018 VITON LT	O-RING -018 VITON LOW-TEMP 75
8	A/R	PAVE-Seal 150	EPOXY BLACK
7	1	GXL18 BLK/ORG	WIRE 18GXL BARE COPPER 16/#30
6	1	GXL16 BLUE	WIRE 16GXL BARE COPPER 19/#29
5	1	GXL16 BLACK	WIRE 16GXL BARE COPPER 19/#29
4	1	GXL12 PINKBLK	WIRE 12GXL BARE COPPER 19/#25
3	1	GXL12 BRNWHT	WIRE 12GXL BARE COPPER 19/#25
2	1	GXL18 YEL/WHT	WIRE 18GXL BARE COPPER 16/#30
1	1	3402	HOUSING SPF14 EPOXY
ITEM	QTY	PART NUMBER	DESCRIPTION

PAVE technology co.
2751 Thunderhawk Court
Dayton, OH 45414-3445
U.S.A.
tel (937) 890-1100
fax (937) 8905165
www.pavetechnologyco.com

DESCRIPTION
SPF14-E-150-2/2/2-GXL18/16/12-32-39

PART NUMBER
3384

MATERIAL NOTED

REVISION LEVEL
M

PROJECTION
☉ ◻

ALL DIMENSIONS AND TOLERANCES APPLY TO FINISHED PART IN INCHES.
ALLOWABLE TOLERANCES UNLESS SPECIFIED OTHERWISE: NONE ±0.5
X.X DECIMAL ±0.1 X.XX DECIMAL ±0.02 X.XXX DECIMAL ±0.005
ANGLES ±1 DEGREE SURFACE FINISH 128 microinch RMS