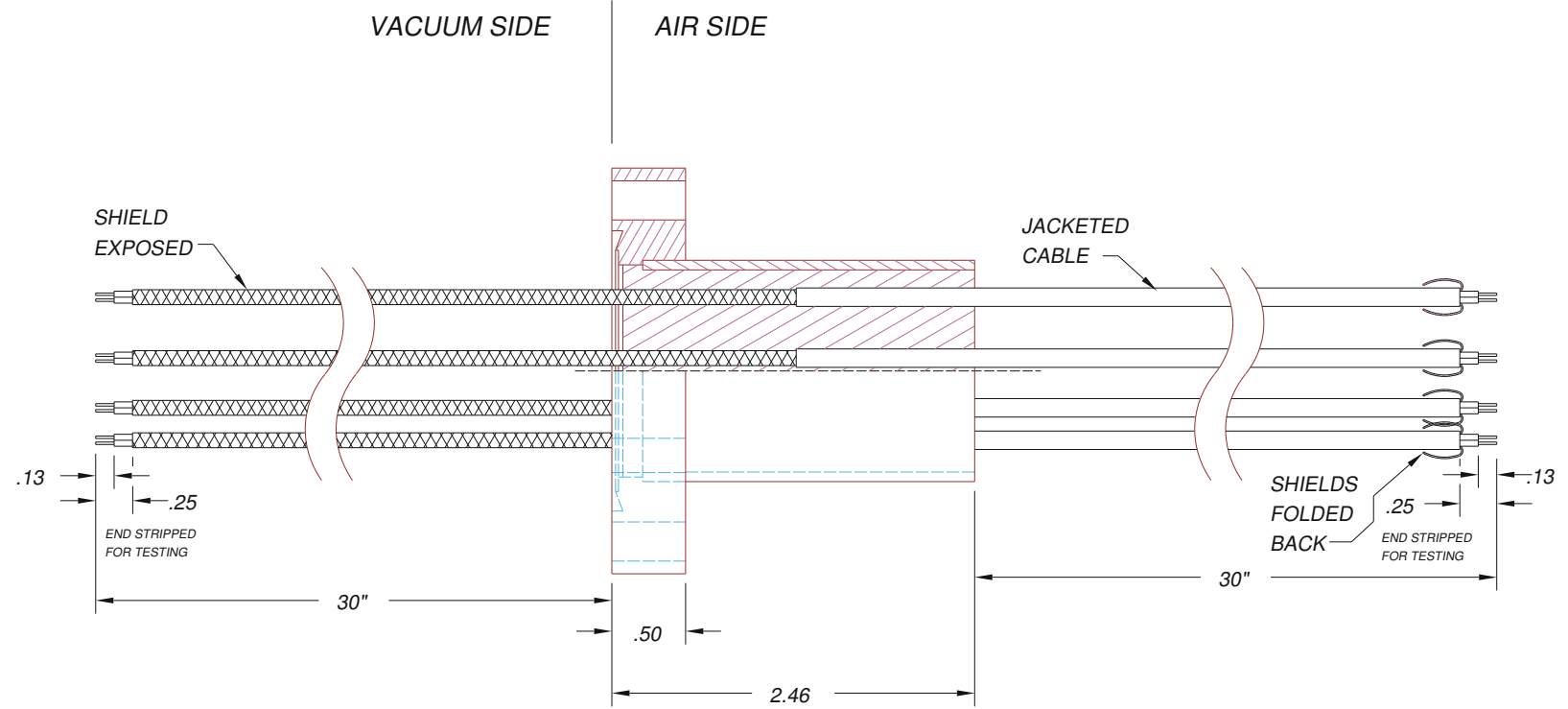
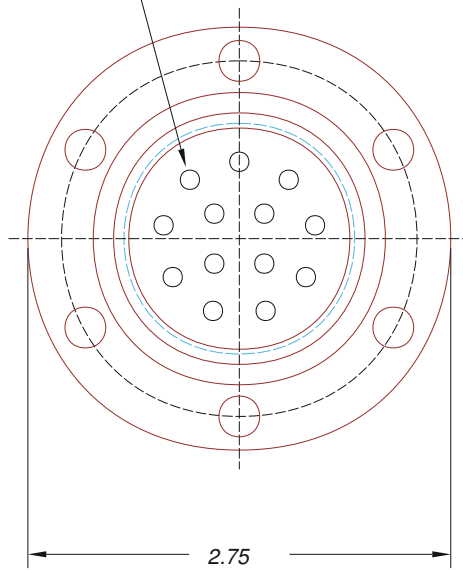



APPROXIMATE WIRE LOCATIONS



NOTES:

1. ELECTRICAL TEST: 630 VDC, 500 MEGOHMS MIN, WIRE TO WIRE, SHIELDS, & HOUSING.
2. He LEAK TEST: UNIT TO TEST BETTER THAN 1×10^{-8} cc/sec @ 1 ATM.

		2751 Thunderhawk Court Dayton, Ohio 45414-3445 U.S.A. (937)890-1100 fax (937)890-5165 www.pavetechnologyco.com
TITLE OR PAVE ORDER CODE CF275-SS-150-13-R24A0024-30-30		
PART NUMBER 1416	PROJECTION 