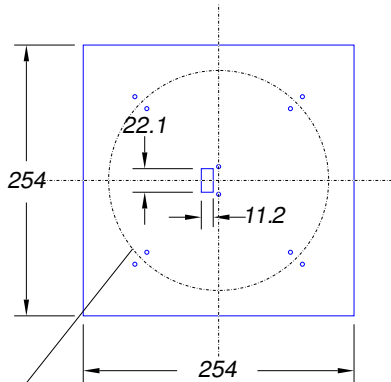
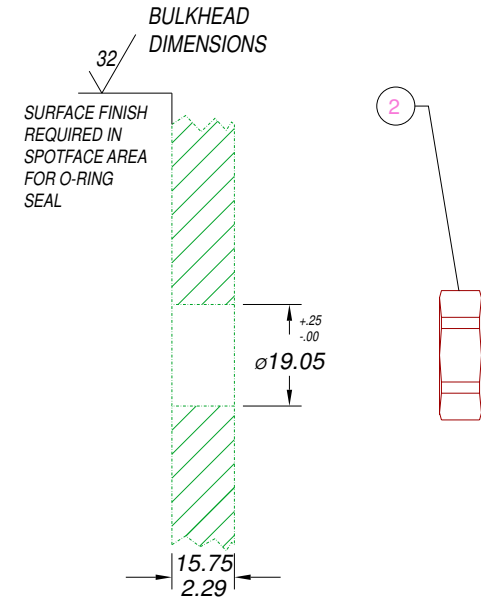
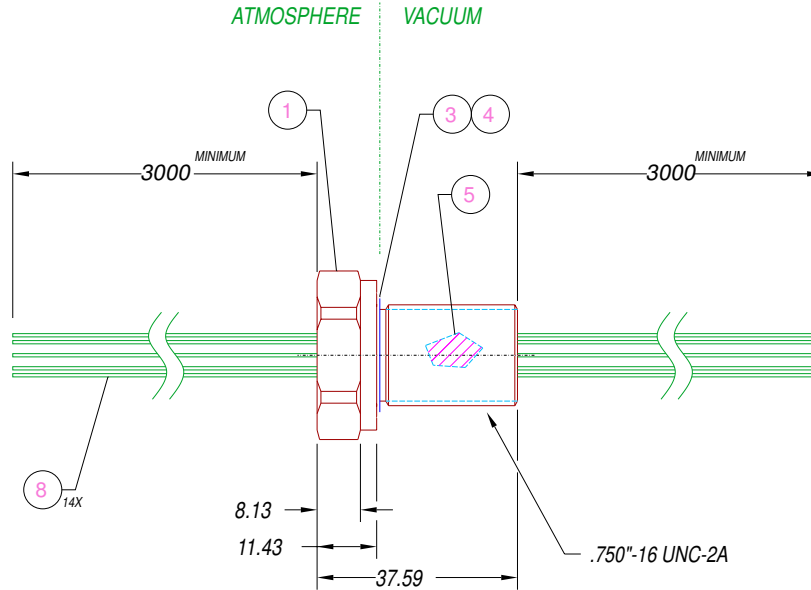


CARDBOARD SHIPPING VEHICLE  
SCALE 1 = 5



COIL FIBERS ~ ø8;  
HOLD IN PLACE W/  
WIRE TIES THROUGH BOARD



- NOTES:
1. HE LEAK TEST @1 ATM. <math>2 \times 10^{-8}</math> CC/S.
  2. OPTICAL CONTINUITY TEST.  
(<math>< 0.5</math> dB LOSS THROUGH PAVE-Seal: REF)
  3. ALL TESTS ARE PERFORMED AT ROOM TEMPERATURE.
  4. ALL SPECIFICATIONS AND TESTS SUPERSEDE PAVE CATALOG SPECIFICATIONS.
  5. PACK ONTO FLAT CARDBOARD WITH HOUSING TIED DOWN & FIBERS COILED AROUND.

8	14@6m	A-STT-30-50	TUBING .012"IDx.006"THK TEFLON
7	9@6m	FS-PM-6621	FIBER OPTICAL 62.5/125um CLEAR
6	5@6m	FS-PZ-6626	FIBER OPTICAL 9/125um AQUA
5	A/R	PAVE-Seal 80	EPOXY BLACK
4	A/R	SUPER O-LUBE	LUBRICANT O-RING SILICONE
3	1	-116 VITON	O-RING -116 VITON 75
2	1	8L5N-SS	NUT VS12-SS
1	1	1180	HOUSING VS12L-SS
ITEM	QTY	PART #	DESCRIPTION

ALL DIMENSIONS AND TOLERANCES APPLY TO FINISHED PART IN MM  
ALLOWABLE TOLERANCES UNLESS SPECIFIED OTHERWISE: NONE +/- .13  
.X DECIMAL +/- 2.5 .XX DECIMAL +/- .50 .XXX DECIMAL +/- .100  
ANGLES +/- 1 DEG SURFACE FINISH 3.2 micrometers RMS



DESCRIPTION PAVE-Opti SealFromans.shx; Cable Harnesses  
VS12L-SS-80-5/9-SM/MM-3m-3m

PART NUMBER

1959

PROJECTION

