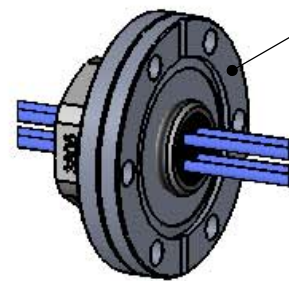
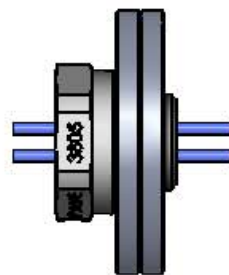
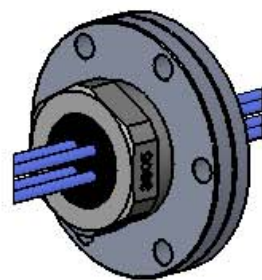
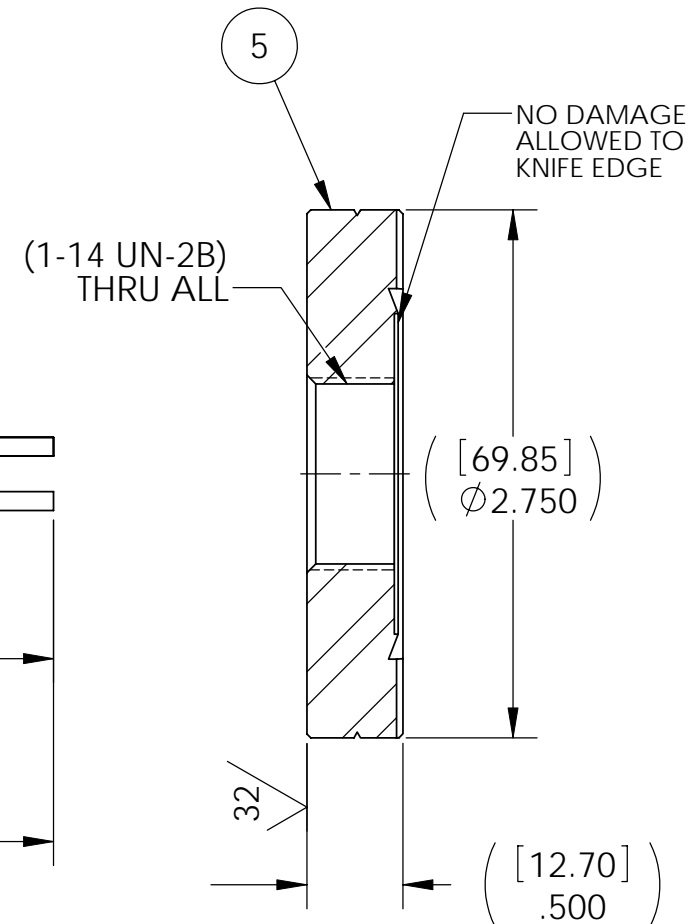
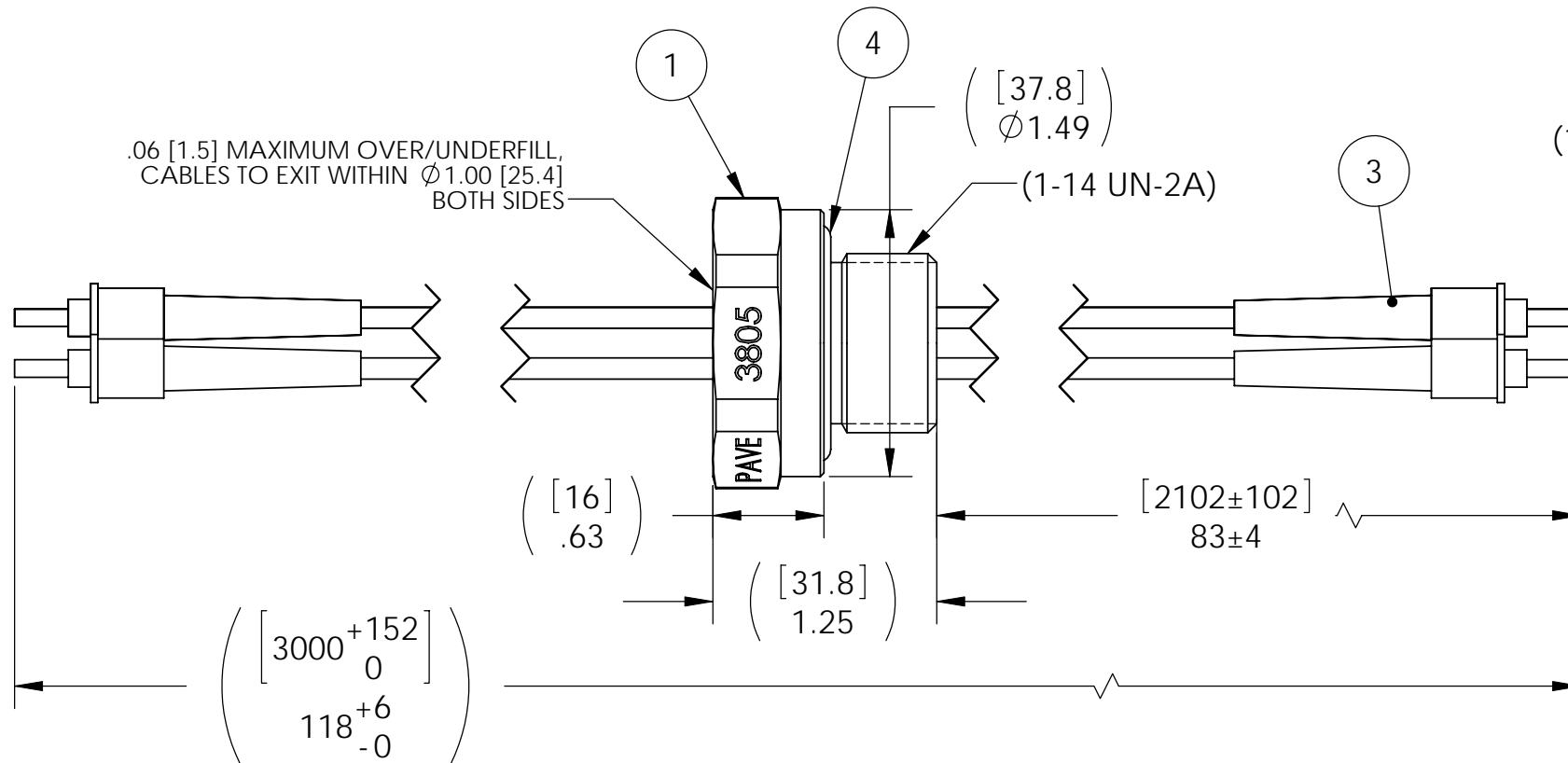
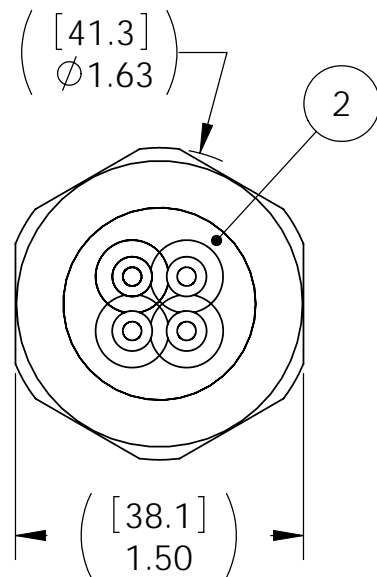


ATMOSPHERE VACUUM



ASSEMBLY IS LEAK TESTED & SHIPS MOUNTED TO ITEM 5 AS SHOWN



NOTES:

1. THE LEAK TEST VACUUM 10×10^{-7} CC/SEC OR LESS. LEAK TEST IS PERFORMED WITH VS15 HOUSING MOUNTED TO ITEM 5 & USING A G-275 VITON GASKET (NOT SUPPLIED).
2. VISUAL OPTICAL CONTINUITY CHECK, ALL 4 FIBERS MUST HAVE CONTINUITY.
3. ALL TESTS ARE PERFORMED AT ROOM TEMPERATURE.
4. ALL PARTS MUST PASS ALL TESTS.
5. VOIDS LARGER THAN $\phi 0.035$ [.89] ARE NOT ACCEPTABLE.
6. REF-OPERATING TEMPERATURE -20°C TO 125°C .
7. DIMENSIONS ARE INCHES [millimeters].
8. PAVE-SEAL CAN BE A BI-DIRECTIONAL HERMETIC SEAL FOR VACUUM AND MOST PRESSURES. FOR PRESSURES ABOVE 150 PSI (10 BAR), CHECK WITH SALES ENGINEERING.

5	1	3821	FLANGE CF275-SS 304L THREADED FOR VS15
4	1	-215 VITON	O-RING -215 VITON 75
3	4	8020-0461-02	FIBER OPTIC CABLE ASSY 3 METER
2	A/R	PAVE-Seal 150	EPOXY BLACK
1	1	0159	HOUSING VS15-SS
ITEM	QTY	PART NUMBER	DESCRIPTION

PAVE technology co.

2751 Thunderhawk Court
Dayton, OH 45414-3445
U.S.A.
tel (937) 890-1100
fax (937) 8905165
www.pavetechnologyco.com

DESCRIPTION
VS15-SS-150-4-400umFO ST-1m-2m

PART NUMBER
3805

MATERIAL NOTED

REVISION LEVEL
A

PROJECTION

ALL DIMENSIONS AND TOLERANCES APPLY TO FINISHED PART IN INCHES.
ALLOWABLE TOLERANCES UNLESS SPECIFIED OTHERWISE: NONE ± 0.5
X.X DECIMAL ± 0.1 X.XX DECIMAL ± 0.02 X.XXX DECIMAL ± 0.005
ANGLES ± 1 DEGREE SURFACE FINISH 128 microinch RMS