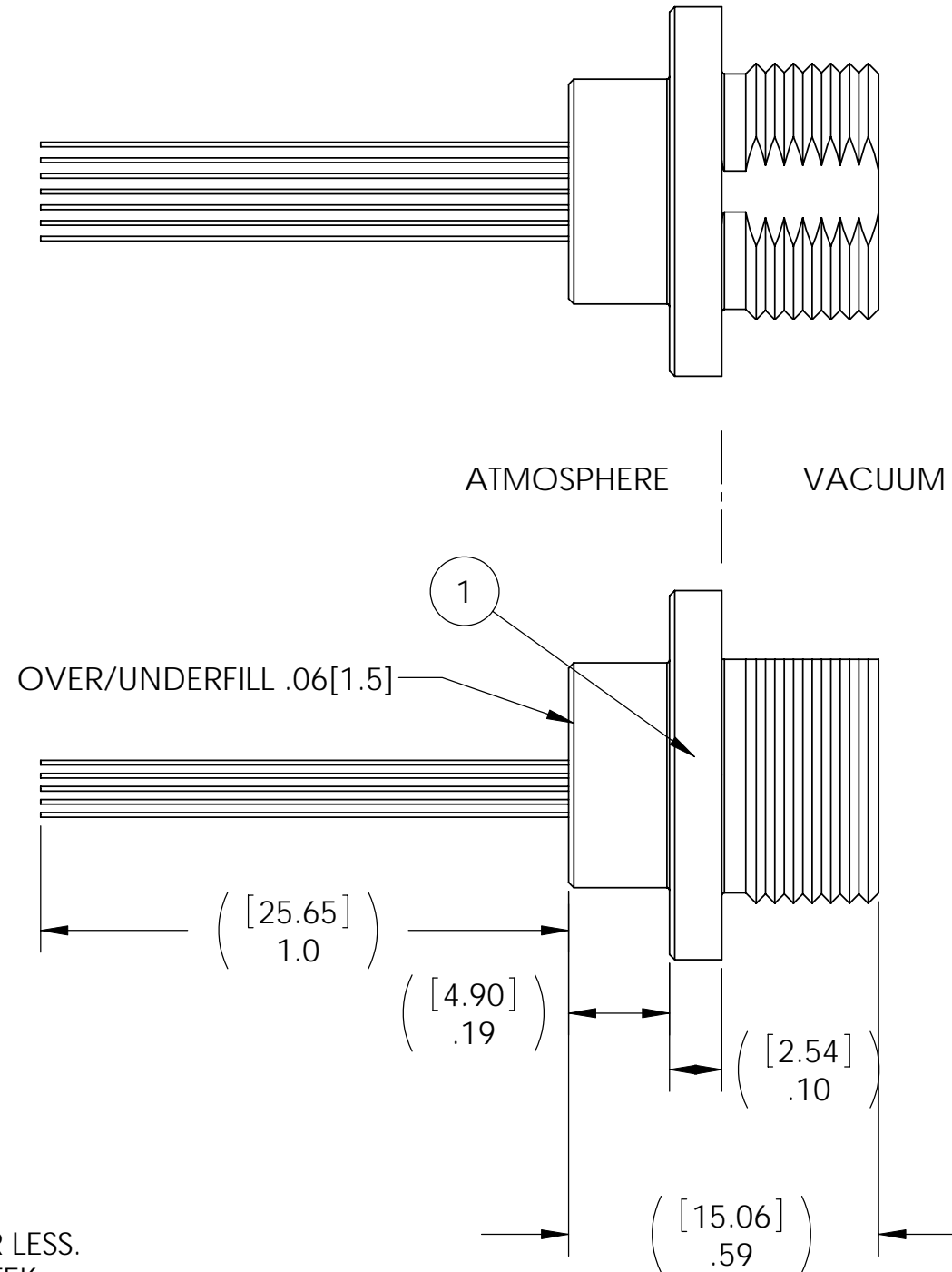
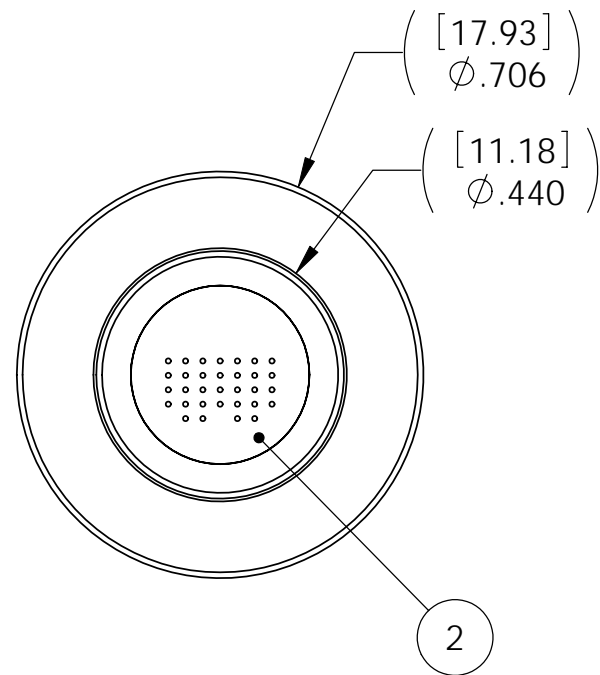
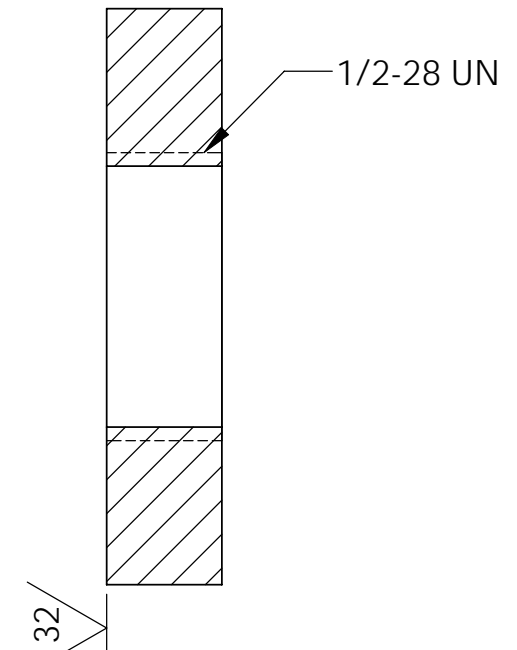


ISSUE LET.	ALTERATIONS	CHANGED BY	DATE



INSTALLATION PORT



NOTES:

1. HE LEAK TEST VACUUM 10×10^{-7} CC/SEC OR LESS. O-RING FOR LEAK TESTING SUPPLIED BY CRISTEK.
2. HYPOT 100 VDC 500 MEGOHMS MINIMUM 0.01 SECOND MINIMUM WIRE TO WIRE AND HOUSING.
3. ALL TESTS ARE PERFORMED AT ROOM TEMPERATURE.
4. ALL PARTS MUST PASS ALL TESTS.
5. WIRE POSITIONING IS APPROXIMATE & VARIABLE.
6. DIMENSION IS OVER-ALL-LENGTH EXCLUDING OVERFILL ON PRESSURE SIDE OF HOUSING.
7. REF-OPERATING TEMPERATURE -40°C TO 125°C .

PAVE will meet the assembly and test specifications of the customer as documented on this assembly drawing. Any changes must be approved by PAVE.

PAVE technology co.
 2751 Thunderhawk Court
 Dayton, OH 45414-3445
 U.S.A.
 tel (937) 890-1100
 fax (937) 8905165
 www.pavetechnologyco.com

DESCRIPTION PAVE-Mate® II Connectors
 C64-AL-150-32-32-C64-1

MATERIAL NOTED

DR. BY MBN APPROVED BY DRAWN FROM CRISTCA

CH'D BY DATE 26 JULY 10 SCALE 3:1

PART NUMBER 3831 REVISION LEVEL -
 1
 2 PROJECTION

ITEM	QTY	PART NUMBER	DESCRIPTION
2	A/R	PAVE-Seal 150	EPOXY BLACK
1	1	C64-00002-01	BWSK-0205,nano, herm,32 pos, top assy, pin side, 3-11-10

FINISH ALL DIMENSIONS AND TOLERANCES APPLY TO FINISHED PART IN INCHES.
 ALLOWABLE TOLERANCES UNLESS SPECIFIED OTHERWISE: NONE ± 0.5
 X.X DECIMAL ± 0.1 X.XX DECIMAL ± 0.02 X.XXX DECIMAL ± 0.005
 ANGLES ± 1 DEGREE SURFACE FINISH 128 microinch RMS

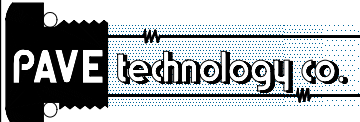
PROPRIETARY PROPERTY OF PAVE
Technology Co. UNAUTHORIZED USE
OR REPRODUCTION IS PROHIBITED.

ISSUE LET.	ALTERATIONS	CHANGED BY	DATE

3831PG2A
MOLDMASTER
MATERIAL: DELRIN OR ALUMINUM & \varnothing SS TUBING/PINS

MOLDMAKING

CONFIDENTIAL




2751 Thunderhawk Court
Dayton, OH 45414-3445
U.S.A.
tel (937) 890-1100
fax (937) 8905165
www.pavetechnologyco.com

DESCRIPTION PAVE-Mate® II Connectors
C64-AL-150-32-32-C64-1

MATERIAL
NOTED

DR. BY MBN	APPROVED BY	DRAWN FROM CRISTCA
---------------	-------------	--------------------------

CH'D BY	DATE 26 JULY 10	SCALE 1:1
---------	--------------------	--------------

PART NUMBER 3831	2	REVISION LEVEL
	2	PROJECTION 

FINISH

ALL DIMENSIONS AND TOLERANCES APPLY TO FINISHED PART IN INCHES.
ALLOWABLE TOLERANCES UNLESS SPECIFIED OTHERWISE: NONE ± 0.5
X.X DECIMAL ± 0.1 X.XX DECIMAL ± 0.02 X.XXX DECIMAL ± 0.005
ANGLES ± 1 DEGREE SURFACE FINISH 128 microinch RMS