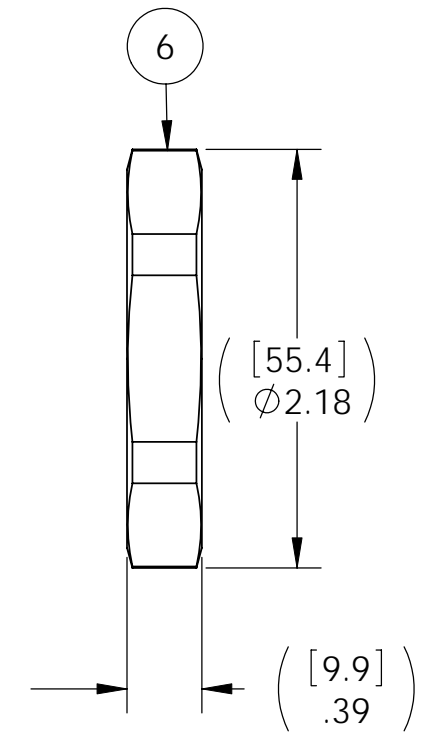
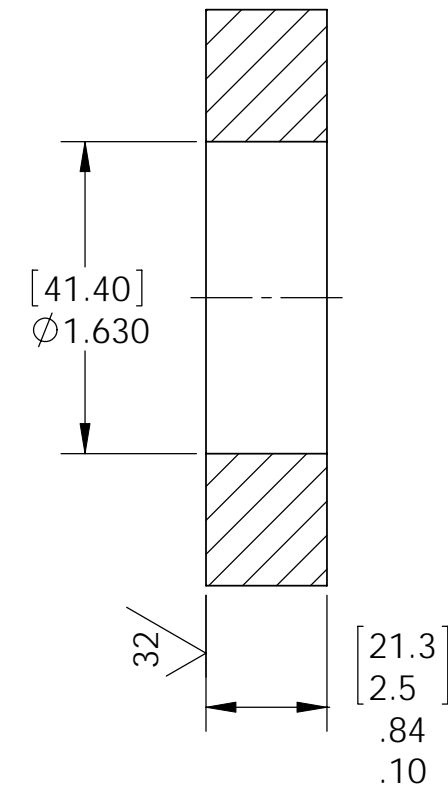



VS22 INSTALLATION PORT



NOTES:

1. HE LEAK TEST @ 1 ATM. 1×10^{-6} CC/SEC OR LESS. A GREEN PAINT DOT INDICATES THE PART HAS PASSED THE TEST.
2. HYPOT 630 VDC 500 MEGOHMS MINIMUM 0.01 SECOND MINIMUM CONTACT TO CONTACT AND HOUSING.
3. CONTINUITY TEST <.5 Ohms MATING CONTACT TO MATING CONTACT.
4. ALCOHOL OR FOMBLIN YVAC 3 MAY BE USED TO LUBRICATE O-RINGS FOR VACUUM HELIUM LEAK TESTING.
5. ALL TESTS ARE PERFORMED AT ROOM TEMPERATURE.
6. ALL PARTS MUST PASS ALL TESTS.
7. WIRE POSITIONING IS APPROXIMATE & VARIABLE.
8. COSMETIC SURFACE VOIDS SMALLER THAN $\phi 0.035$ [0.89] ARE ACCEPTABLE.
9. REF-OPERATING TEMPERATURE -20°C TO 125°C .
10. DIMENSIONS ARE INCHES [millimeters].
11. PAVE-SEAL CAN BE A BI-DIRECTIONAL HERMETIC SEAL FOR VACUUM AND MOST PRESSURES. FOR PRESSURES ABOVE 150 PSI (10 BAR), CHECK WITH SALES ENGINEERING.

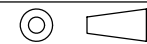
6	1	0199	NUT VS22-SS
5	1	-224 VITON	O-RING -224 VITON 75
4	4	019235-8000	QUADRAX CONTACT #9 SOCKET
3	4	019135-8000	QUADRAX CONTACT #9 PIN
2	A/R	PAVE-Seal 150	EPOXY BLACK
1	1	0189/304SS	HOUSING VS22-SS
ITEM	QTY	PART NUMBER	DESCRIPTION


 2751 Thunderhawk Court
 Dayton, OH 45414-3445
 U.S.A.
 tel (937) 890-1100
 fax (937) 8905165
 www.pavetechnologyco.com

DESCRIPTION
 VS22-SS-150-4-9-QUADRAXPS

PART NUMBER
4874

MATERIAL NOTED

REVISION LEVEL -
 PROJECTION 

ALL DIMENSIONS AND TOLERANCES APPLY TO FINISHED PART IN INCHES.
 ALLOWABLE TOLERANCES UNLESS SPECIFIED OTHERWISE: NONE ± 0.5
 X.X DECIMAL ± 0.1 X.XX DECIMAL ± 0.02 X.XXX DECIMAL ± 0.005
 ANGLES ± 1 DEGREE SURFACE FINISH 128 microinch RMS