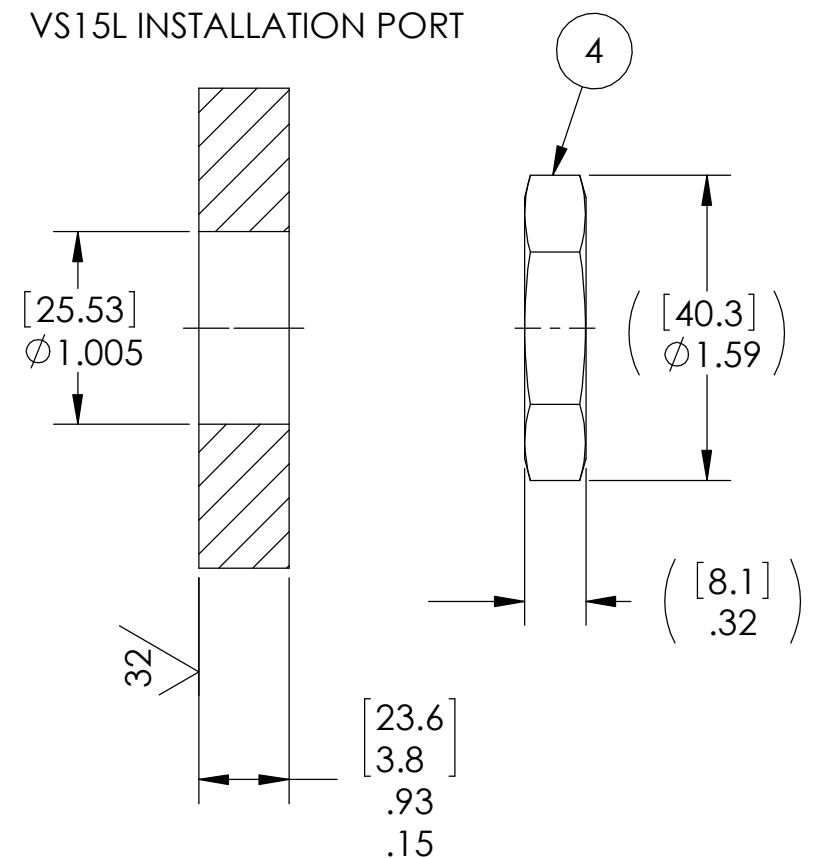


VS15L INSTALLATION PORT



NOTES:

1. HE LEAK TEST @1 ATM. 1X10<sup>-8</sup> CC/SEC OR LESS.
2. HYPOT 630 VDC 500 MEGOHMS MINIMUM 0.01 SECOND MINIMUM WITH MATING CONNECTORS, CENTER CONDUCTOR TO SHIELD TO HOUSING. (SHIELD IS FLOATING)
3. ALL TESTS ARE PERFORMED AT ROOM TEMPERATURE.
4. ALL PARTS MUST PASS ALL TESTS.
5. CONTINUITY TEST WITH MATING CONNECTORS 1.0 Ω MAX, CENTER CONDUCTOR & SHIELD, END TO END.
6. ADDING "HP" TO THE END OF THE PART NUMBER (0261HP) INDICATES AN ALTERNATE LEAK TEST TO BE PERFORMED: 1300 PSI (HEX SIDE), NO N2 BUBBLES 30 SECONDS MINIMUM.
7. THESE PARTS ARE CLEANED IN A DEGREASER SOLVENT VAPOR THEN PACKAGED IN A LAMINAR FLOW HOOD PROVIDING AN ISO CLASS 5 (CLASS 100) ENVIRONMENT WITHIN THE WORK AREA.
8. COSMETIC SURFACE VOIDS NOT ON O-RING SEALING SURFACES ARE ACCEPTABLE BASED ON THE SEAL'S DIAMETER:  
 <= .5 [12.7] SEAL DIAMETER: Ø .035 [.89] MAX ALLOWED VOID SIZE  
 > .5 [12.7] SEAL DIAMETER: Ø .060 [1.5] MAX ALLOWED VOID SIZE
9. REF-OPERATING TEMPERATURE -20°C TO 125°C.
10. DIMENSIONS ARE INCHES [millimeters].
11. PAVE-SEAL CAN BE A BI-DIRECTIONAL HERMETIC SEAL FOR VACUUM AND MOST PRESSURES. FOR PRESSURES ABOVE 150 PSI (10 BAR), CHECK WITH SALES ENGINEERING.

5	2	AMPH# 31-2221	RCPT BNC UG-1094A/U 50 OHM
4	1	0183	NUT VS15-SS
3	1	-215 VITON	O-RING -215 VITON 75
2	A/R	PAVE-Seal 150	EPOXY BLACK
1	1	0161	HOUSING VS15L-SS
ITEM	QTY	PART NUMBER	DESCRIPTION

**PAVE technology co.**

2751 Thunderhawk Court  
Dayton, OH 45414-3445  
U.S.A.  
tel (937) 890-1100  
fax (937) 8905165  
www.pavetechnologyco.com

DESCRIPTION  
VS15L-SS-150-1-BNC-BNC

PART NUMBER  
**0261**

MATERIAL NOTED

REVISION LEVEL  
M

PROJECTION

ALL DIMENSIONS AND TOLERANCES APPLY TO FINISHED PART IN INCHES.  
 ALLOWABLE TOLERANCES UNLESS SPECIFIED OTHERWISE: NONE ±0.5  
 X.X DECIMAL ±0.1 X.XX DECIMAL ±0.02 X.XXX DECIMAL ±0.005  
 ANGLES ±1 DEGREE SURFACE FINISH 128 microinch RMS