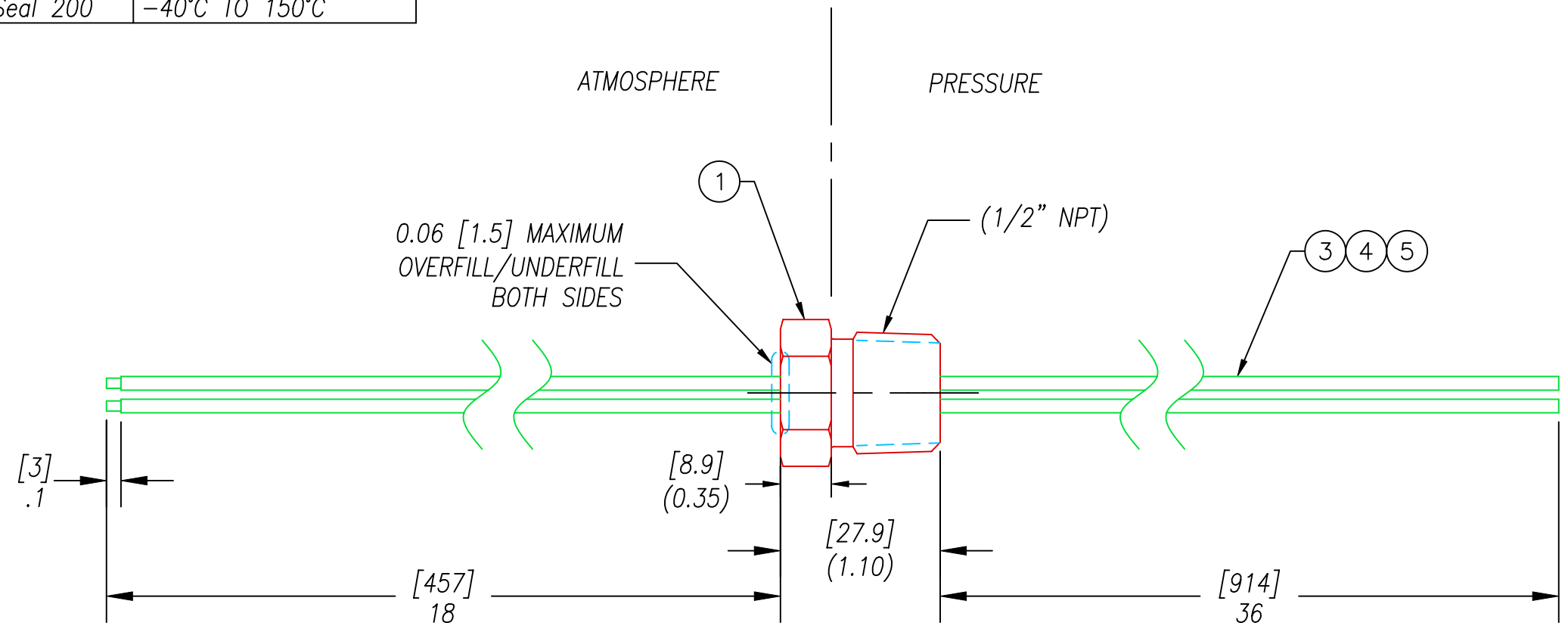
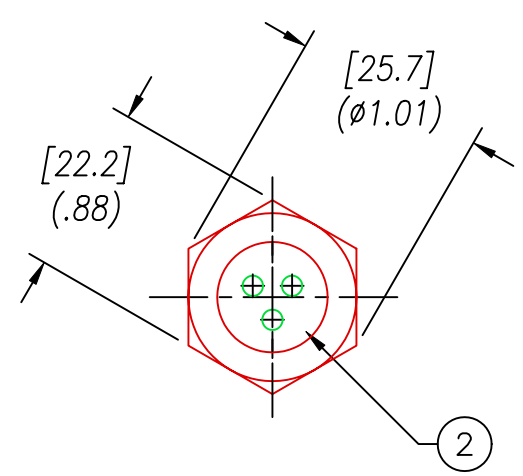


PAVE#	PAVE DESCRIPTION	ITEM 2 PART#	TEMPERATURE RANGE
1447	PT8-SS-150-3-TEE14-18-36	PAVE-Seal 150	-20°C TO 125°C
1447-1	PT8-SS-150-3-TEE14-18-36	PAVE-Seal 150	-20°C TO 125°C
1447-2	PT8-SS-200-3-TEE14-18-36	PAVE-Seal 200	-40°C TO 150°C



- NOTES:
- 1a. 1447 LEAK TEST: 80 PSI, NO BUBBLES 2 MINUTES MINIMUM. A GREEN PAINT DOT INDICATES PART HAS PASSED THE TEST.
  - 1b. 1447-1 & 1447-2 LEAK TEST: 2000 PSI, NO BUBBLES 30 SECONDS MINIMUM. A GREEN PAINT DOT INDICATES PART HAS PASSED THE TEST.
  2. HYPOT 630 VDC 500 MΩ 0.01 SEC MINIMUM, WIRE TO WIRE & HOUSING.
  3. ALL TESTS ARE PERFORMED AT ROOM TEMPERATURE.
  4. ALL PARTS MUST PASS ALL TESTS.
  5. WIRE POSITIONING IS APPROXIMATE AND VARIABLE.
  6. NO COSMETIC SURFACE VOIDS LARGER THAN  $\phi 0.035$  [0.89] ARE ACCEPTABLE.
  7. REF-OPERATING TEMPERATURE RANGE SEE TABLE.
  8. DIMENSIONS ARE INCHES [millimeters].
  9. PAVE-SEAL CAN BE A BI-DIRECTIONAL HERMETIC SEAL FOR VACUUM AND MOST PRESSURES. FOR PRESSURES ABOVE 150 PSI (10 BAR), CHECK WITH SALES ENGINEERING.

5	1	EE14 WHITE	WIRE 14EE MIL-W-16878/5 19/#27 .017
4	1	EE14 RED	WIRE 14EE MIL-W-16878/5 19/#27 .017
3	1	EE14 GRN/YEL	WIRE 14EE MIL-W-16878/5 19/#27 .017
2	A/R	SEE TABLE	EPOXY BLACK
1	1	0346	HOUSING PT8-SS
ITEM	QTY	PART#	DESCRIPTION


 2751 Thunderhawk Court  
 Dayton, Ohio 45414-3445  
 U.S.A.  
 (937)890-1100  
 fax (937)890-5165  
 www.pavetechnologyco.com

ALL DIMENSIONS AND TOLERANCES APPLY TO FINISHED PART IN INCHES  
 ALLOWABLE TOLERANCES UNLESS SPECIFIED OTHERWISE: NONE +/-0.5  
 .X DECIMAL +/- 0.1 .XX DECIMAL +/- 0.02 .XXX DECIMAL +/-0.005  
 ANGLES +/- 1 DEG SURFACE FINISH 128 microinch RMS

DESCRIPTION  
 \*SEE TABLE  
 PART NUMBER \*SEE TABLE  
 1447\*  
 REVISION LEVEL  
 G  
 PROJECTION 