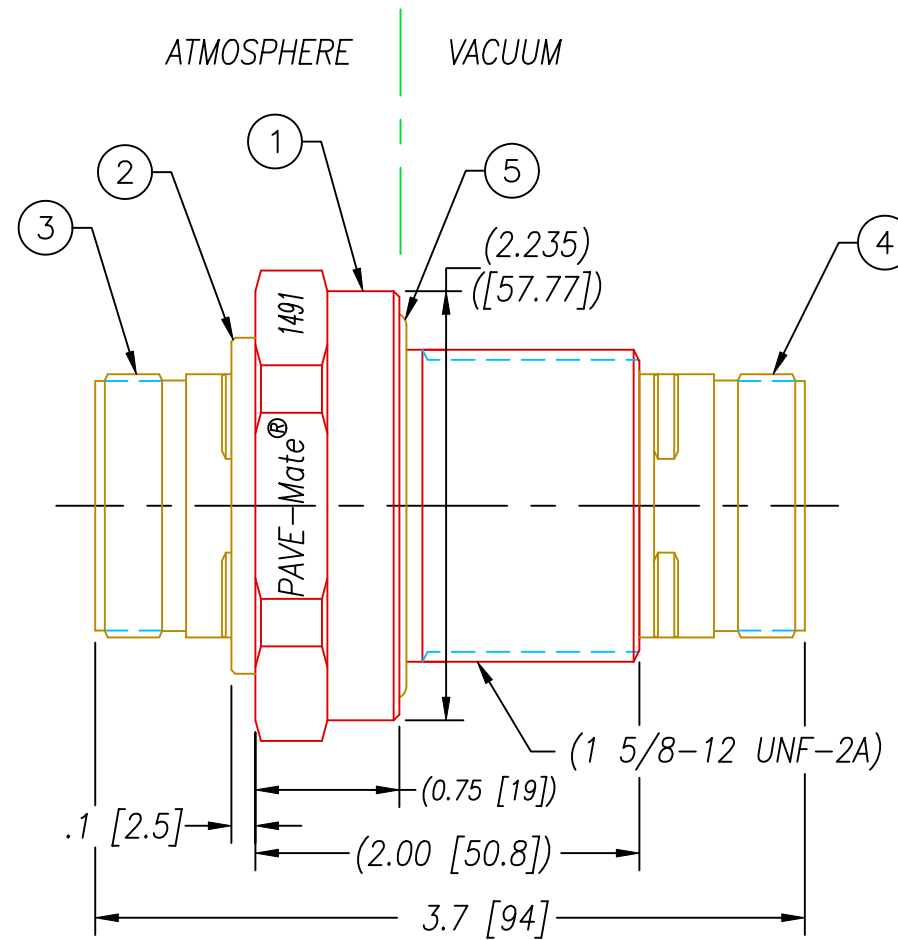
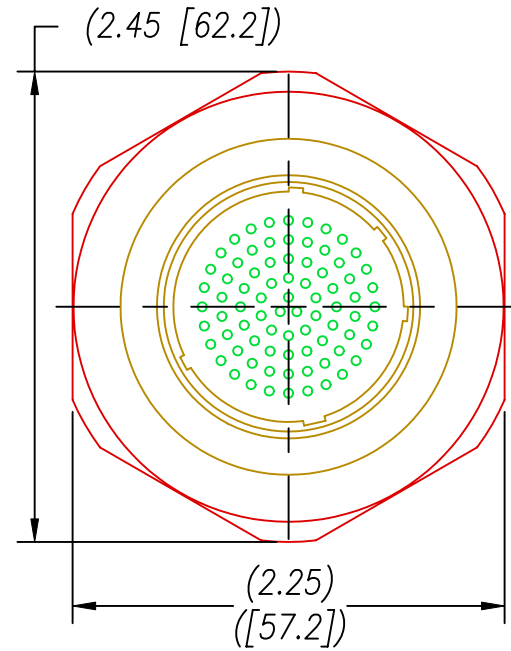
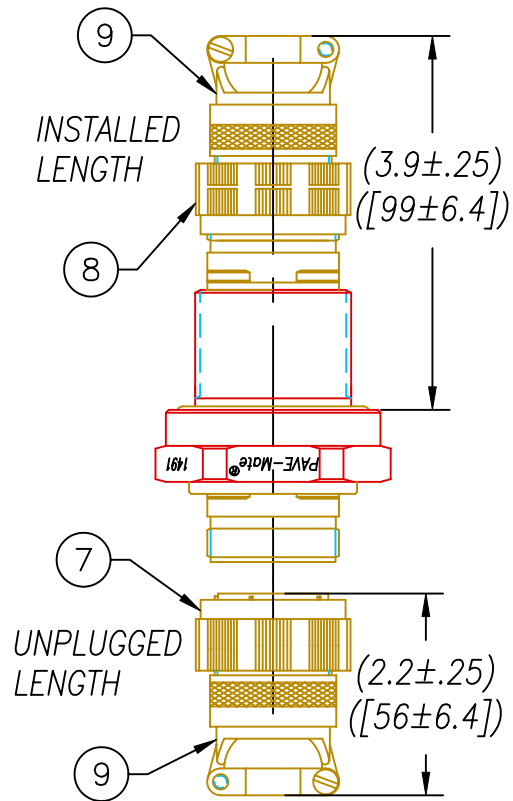
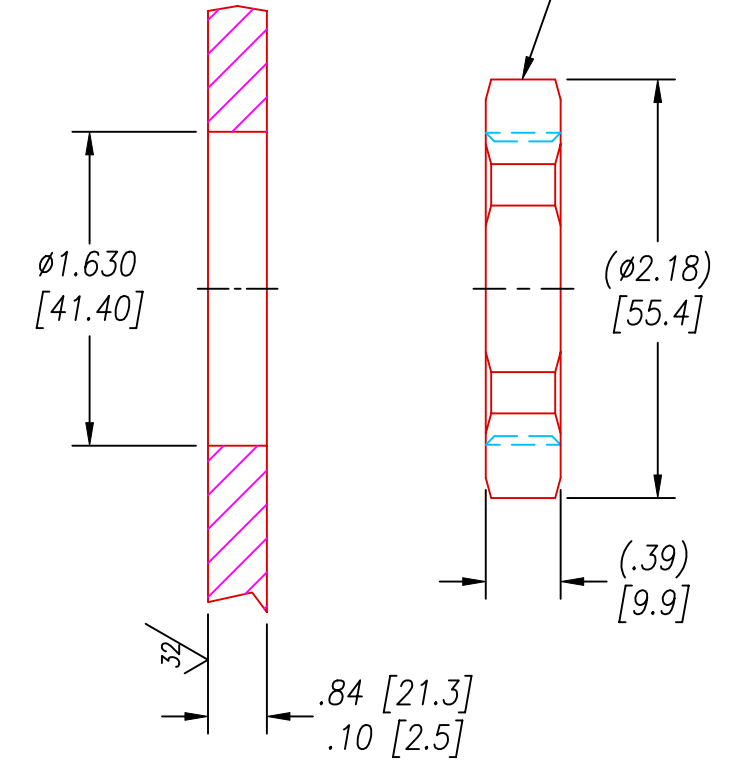


SCALE: 1:2



VS22 INSTALLTION PORT



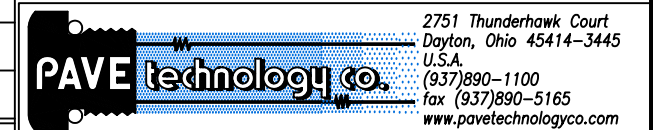
NOTES:

1. HE LEAK TEST @1 ATM. 1X10<sup>-7</sup> CC/S OR LESS. A GREEN PAINT DOT INDICATES PART HAS PASSED THE TEST.
2. HYPOT 1000 VDC 500 MΩ 0.01 SEC MINIMUM, PIN TO PIN & HOUSING WITH MATING CONNECTORS.
3. CONTINUITY TEST PIN TO SOCKET <0.5 Ω WITH MATING CONNECTORS.
4. ALL TESTS ARE PERFORMED AT ROOM TEMPERATURE.
5. ALL PARTS MUST PASS ALL TESTS.
6. REF-OPERATING TEMPERATURE RANGE SEE TABLE.
7. COSMETIC SURFACE VOIDS NOT ON O-RING SEALING SURFACES ARE ACCEPTABLE BASED ON THE SEAL'S DIAMETER:  
 <= .5 [12.7] SEAL DIAMETER: ∅0.035 [.89] MAX ALLOWED VOID SIZE  
 > .5 [12.7] SEAL DIAMETER: ∅0.060 [1.5] MAX ALLOWED VOID SIZE
8. ADDING AN "A", "B", "C", OR "D" TO THE END OF THE PAVE "PART NUMBER" AND "DESCRIPTION" INDICATES AN ALTERNATE INSERT CLOCKING. IT ALSO CHANGES THE "N" AT THE END OF THE "PART#" OF ITEMS 3, 4, 7, & 8 TO AN "A", "B", "C", OR "D".
9. ADDING "NP" TO THE END OF THE PAVE "PART NUMBER" AND "DESCRIPTION" INDICATES THAT ITEMS 7, 8, & 9 ARE NOT INCLUDED (NO PLUGS).
10. DIMENSIONS ARE INCHES [millimeters].
11. ALCOHOL OR FOMBLIN YVAC 3 MAY BE USED TO LUBRICATE O-RINGS FOR VACUUM HELIUM LEAK TESTING.

PAVE#	ITEM 5	ITEM 5 DESCRIPTION	TEMPERATURE RANGE
1491	-224 VITON LT	O-RING -224 VITON 75 LT	-40°C TO 125°C
1491-1	-224 BUTYL	O-RING -224 BUTYL 75	-60°C TO 121°C

9	2	M85049/38-21A	STRAIN RELIEF FOR 26FG35SN
8	1	26FG35PN	PLUG 79#22 PINS 999 SERIES III
7	1	26FG35SN	PLUG 79#22 SOCS 999 SERIES III
6	1	0199	NUT VS22-SS (316SS)
5	1	SEE TABLE	SEE TABLE
4	1	20FG35SN	RCPT 79#22 SOCS 999 SERIES III
3	1	20FG35PN	RCPT 79#22 PINS 999 SERIES III
2	A/R	PAVE-Seal 150	EPOXY BLACK
1	1	3388	HOUSING VS22-304SS
ITEM	QTY	PART#	DESCRIPTION

ALL DIMENSIONS AND TOLERANCES APPLY TO FINISHED PART IN INCHES  
 ALLOWABLE TOLERANCES UNLESS SPECIFIED OTHERWISE: NONE +/-0.5  
 .X DECIMAL +/- 0.1 .XX DECIMAL +/- 0.02 .XXX DECIMAL +/-0.005  
 ANGLES +/- 1 DEG SURFACE FINISH 128 microinch RMS



DESCRIPTION PAVE-Mate® I Connectors  
 VS22-304SS-150-79-22-999/20PS

PART NUMBER	*SEE TABLE	REVISION LEVEL	K
1491*		PROJECTION	