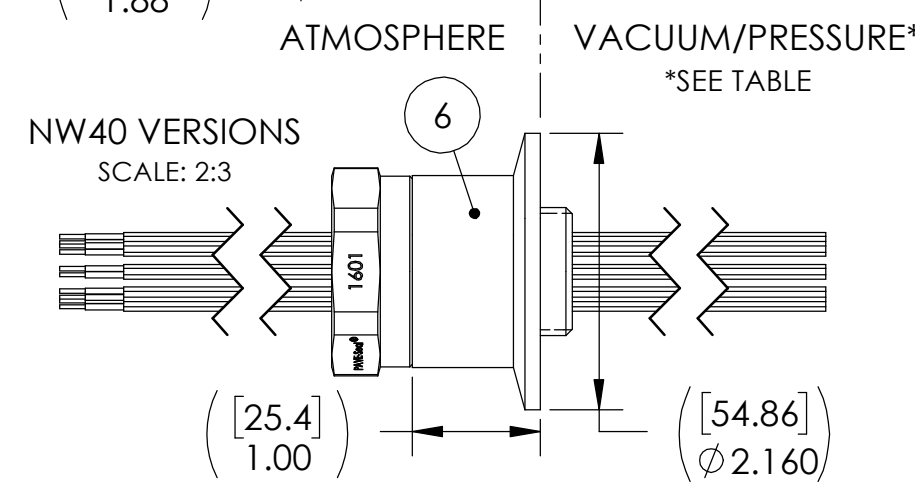
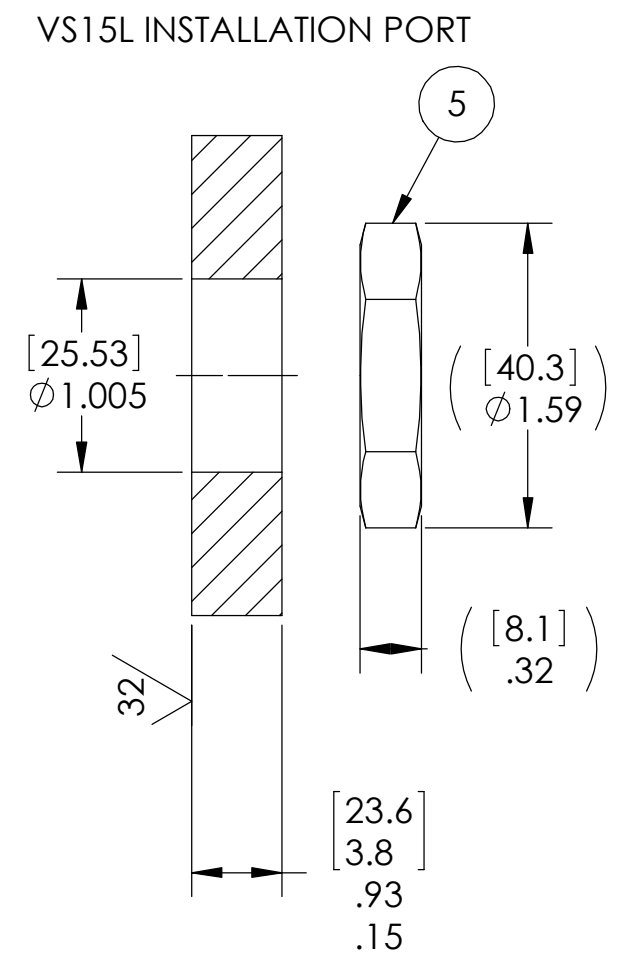
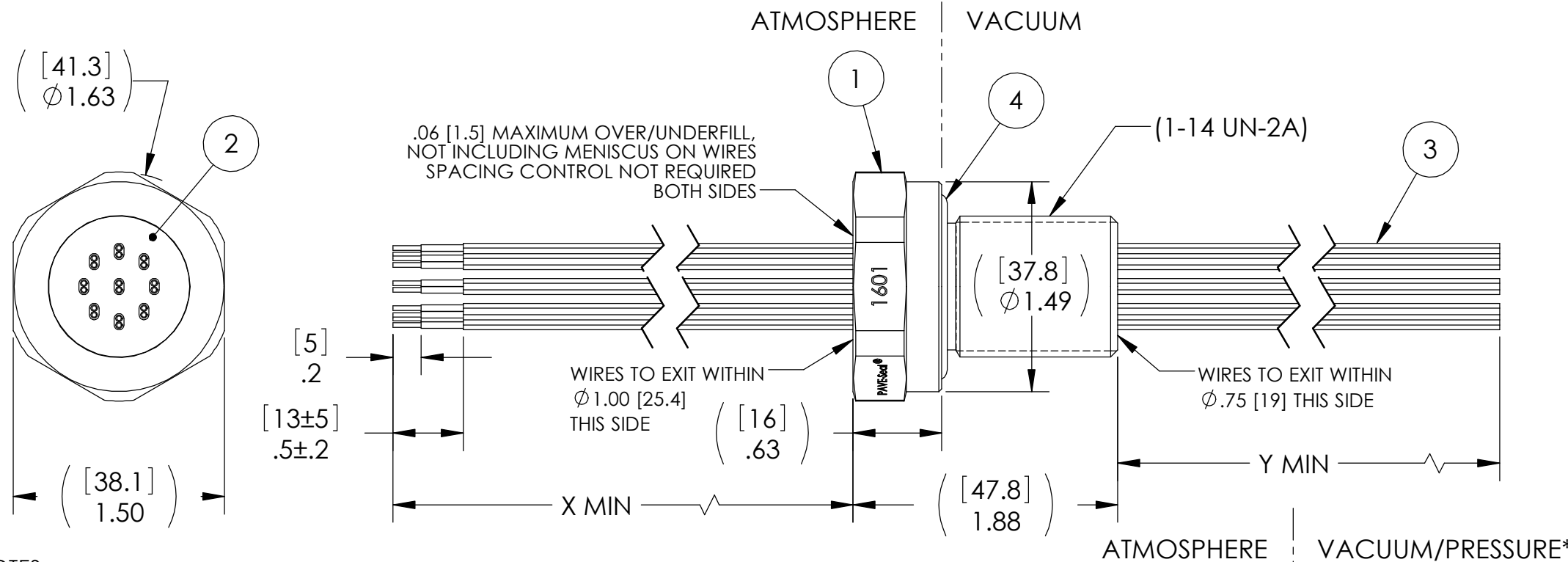


PAVE#	X	Y	ITEM 2	ITEM 4	ITEM 4 DESCRIPTION	TEMPERATURE	PAVE DESCRIPTION	LEAK TEST
1601	48 [1219]	48 [1219]	PAVE-Seal 150	-215 VITON	O-RING -215 VITON 75	-20°C TO 125 °C	VS15L-SS-150-9P-KT20-48-48	HE LEAK TEST @ 1 ATM. 1X10 ⁻⁶ CC/SEC OR LESS
1601-1	96 [2438]	96 [2438]	PAVE-Seal 150	-215 VITON	O-RING -215 VITON 75	-20°C TO 125 °C	VS15L-SS-150-9P-KT20-96-96	HE LEAK TEST @ 1 ATM. 1X10 ⁻⁶ CC/SEC OR LESS
1601-2	72 [1829]	12 [305]	PAVE-Seal 200	-215 VITON	O-RING -215 VITON 75	-20°C TO 150 °C	VS15L-SS-200-9P-KT20-72-12	HE LEAK TEST @ 1 ATM. 1X10 ⁻⁶ CC/SEC OR LESS
1601-3	72 [1829]	72 [1829]	PAVE-Seal 150	-215 VITON	O-RING -215 VITON 75	-20°C TO 125 °C	VS15L-SS-150-9P-KT20-72-72	HE LEAK TEST @ 1 ATM. 1X10 ⁻⁶ CC/SEC OR LESS
1601-NW40	48 [1219]	48 [1219]	PAVE-Seal 150	-215 BUTYL	O-RING -215 BUTYL 70	-59 °C TO 121 °C	VS15L-SS-150-9P-KT20-48-48	HE LEAK TEST @ 1 ATM. 1X10 ⁻⁶ CC/SEC OR LESS
1601-NW40-1	120 [3048]	60 [1524]	PAVE-Seal 150	-215 VITON	O-RING -215 VITON 75	-20°C TO 125 °C	VS15L-SS-150-9P-KT20-120-60	HE LEAK TEST @ 1 ATM. 1X10 ⁻⁶ CC/SEC OR LESS
1601-NW40P	48 [1219]	48 [1219]	PAVE-Seal 150	-215 VITON	O-RING -215 VITON 75	-20°C TO 125 °C	VS15L-SS-150-9P-KT20-48-48	250 PSI, NO N2 BUBBLES 1 MINUTE MINIMUM



- NOTES:
- LEAK TEST PER TABLE. A GREEN PAINT DOT ON THE ATMOSPHERE SIDE INDICATES THE PART HAS PASSED THE TEST.
 - HYPOT 630 VDC 500 MEGOHMS MINIMUM 0.01 SECOND MINIMUM WIRE TO WIRE AND HOUSING.
 - ALL TESTS ARE PERFORMED AT ROOM TEMPERATURE.
 - ALL PARTS MUST PASS ALL TESTS.
 - WIRE POSITIONING IS APPROXIMATE & VARIABLE.
 - DIMENSIONS ARE INCHES [millimeters].
 - COSMETIC SURFACE VOIDS NOT ON O-RING SEALING SURFACES ARE ACCEPTABLE BASED ON THE SEAL'S DIAMETER:
 <= .5 [12.7] SEAL DIAMETER: Ø.035 [.89] MAX ALLOWED VOID SIZE
 > .5 [12.7] SEAL DIAMETER: Ø.060 [1.5] MAX ALLOWED VOID SIZE
 - REF-OPERATING TEMPERATURE RANGE SEE TABLE.
 - PAVE-SEAL CAN BE A BI-DIRECTIONAL HERMETIC SEAL FOR VACUUM AND MOST PRESSURES. FOR PRESSURES ABOVE 150 PSI (10 BAR), CHECK WITH SALES ENGINEERING.
 - ALCOHOL OR FOMBLIN YVAC 3 MAY BE USED TO LUBRICATE O-RINGS FOR VACUUM HELIUM LEAK TESTING.
 - 1601-NW40 OR 1601-NW40-1: SHIPS INSTALLED AND LEAK TESTED, PER NOTE 1, IN ITEM 6 (NW40 ADAPTER) AND DOES NOT INCLUDE ITEM 5 (JAM NUT).

ITEM	QTY	PART NUMBER	DESCRIPTION
6	1	5119	HOUSING NW40-SS VS15 ADAPTER
5	1	0183	NUT VS15-SS
4	1	SEE TABLE	SEE TABLE
3	9	KT20	CABLE T/C TYPE K 20AWG TEFLON
2	A/R	PAVE-Seal 150	EPOXY BLACK
1	1	0161	HOUSING VS15L-SS

PAVE technology co.

2751 Thunderhawk Court
Dayton, OH 45414-3445
U.S.A.
tel (937) 890-1100
fax (937) 8905165
www.pavetechnologyco.com

DESCRIPTION
SEE TABLE

PART NUMBER **1601*** MATERIAL NOTED

REVISION LEVEL M PROJECTION

ALL DIMENSIONS AND TOLERANCES APPLY TO FINISHED PART IN INCHES.
 ALLOWABLE TOLERANCES UNLESS SPECIFIED OTHERWISE: NONE ±0.5
 X.X DECIMAL ±0.1 X.XX DECIMAL ±0.02 X.XXX DECIMAL ±0.005
 ANGLES ±1 DEGREE SURFACE FINISH 128 microinch RMS