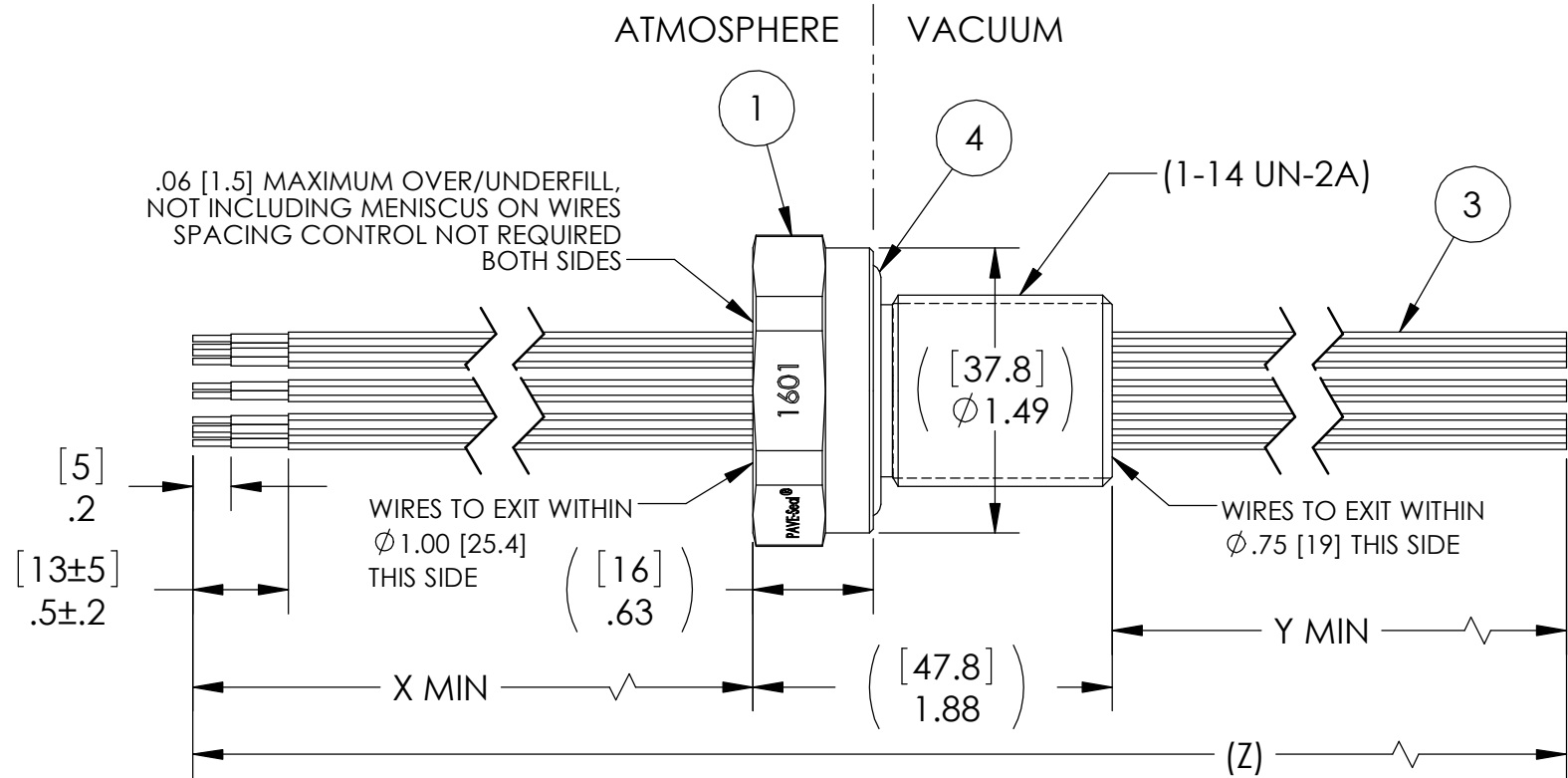
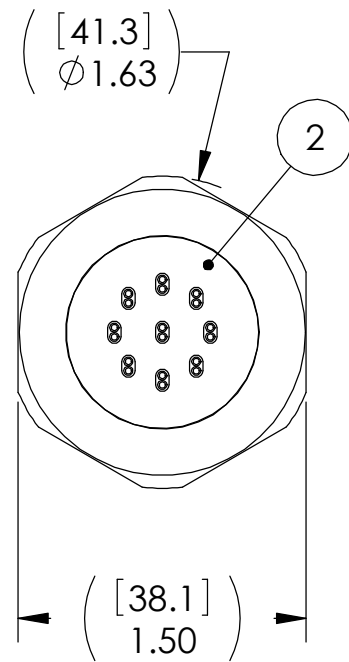
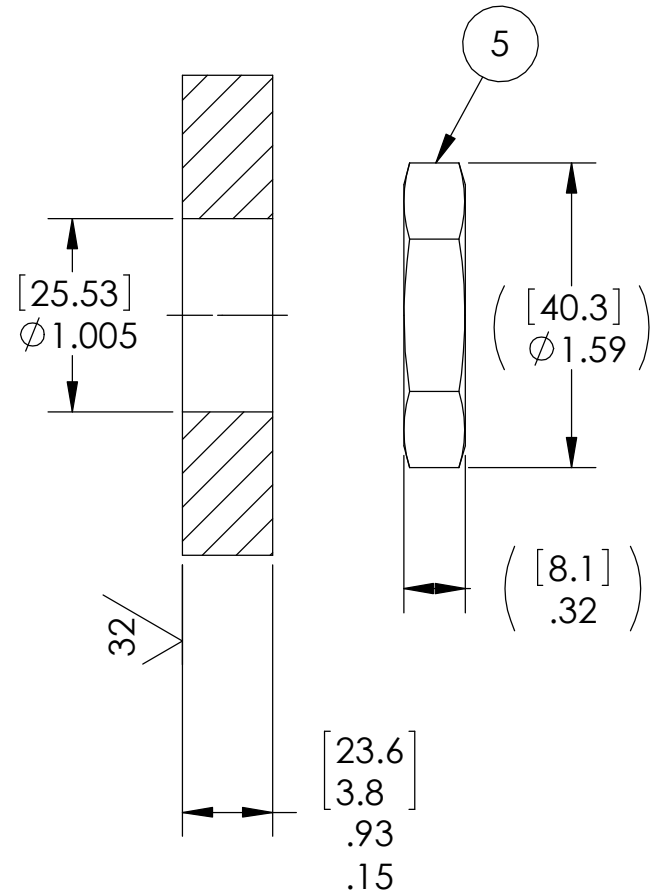


PAVE#	X	Y	(Z)	ITEM 2	TEMPERATURE	PAVE DESCRIPTION
1601	48 [1219]	48 [1219]	(98) [2489]	PAVE-Seal 150	-20°C TO 125°C	VS15L-SS-150-9P-KT20-48-48
1601-1	96 [2438]	96 [2438]	(194) [4928]	PAVE-Seal 150	-20°C TO 125°C	VS15L-SS-150-9P-KT20-96-96
1601-2	72 [1829]	12 [305]	(86) [2184]	PAVE-Seal 200	-20°C TO 150°C	VS15L-SS-200-9P-KT20-72-12
1601-3	72 [1829]	72 [1829]	(146) [3708]	PAVE-Seal 150	-20°C TO 125°C	VS15L-SS-150-9P-KT20-72-72
1601-NW40	48 [1219]	48 [1219]	(98) [2489]	PAVE-Seal 150	-20°C TO 125°C	VS15L-SS-150-9P-KT20-48-48

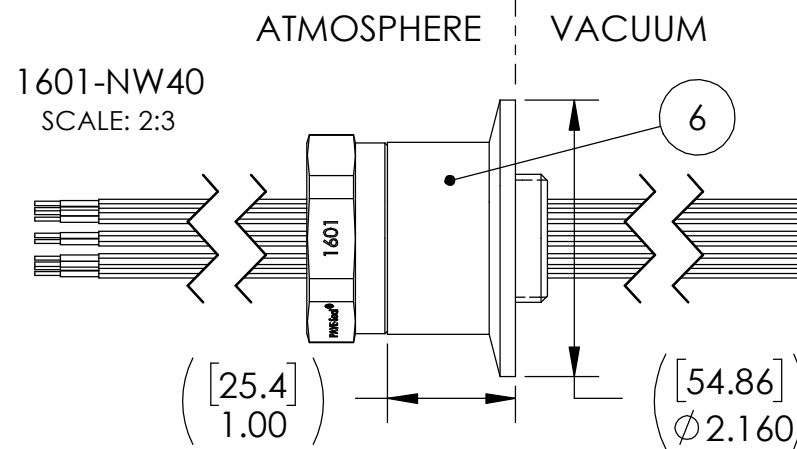


VS15L INSTALLATION PORT



NOTES:

- HE LEAK TEST @ 1 ATM. 1X10⁻⁶ CC/SEC OR LESS. A GREEN PAINT DOT ON THE ATMOSPHERE SIDE INDICATES THE PART HAS PASSED THE TEST.
- HYPOT 630 VDC 500 MEGOHMS MINIMUM 0.01 SECOND MINIMUM WIRE TO WIRE AND HOUSING.
- ALL TESTS ARE PERFORMED AT ROOM TEMPERATURE.
- ALL PARTS MUST PASS ALL TESTS.
- WIRE POSITIONING IS APPROXIMATE & VARIABLE.
- DIMENSIONS ARE INCHES [millimeters].
- COSMETIC SURFACE VOIDS NOT ON O-RING SEALING SURFACES ARE ACCEPTABLE BASED ON THE SEAL'S DIAMETER:
 <= .5 [12.7] SEAL DIAMETER: ϕ .035 [.89] MAX ALLOWED VOID SIZE
 > .5 [12.7] SEAL DIAMETER: ϕ .060 [1.5] MAX ALLOWED VOID SIZE
- REF-OPERATING TEMPERATURE RANGE SEE TABLE.
- PAVE-SEAL CAN BE A BI-DIRECTIONAL HERMETIC SEAL FOR VACUUM AND MOST PRESSURES. FOR PRESSURES ABOVE 150 PSI (10 BAR), CHECK WITH SALES ENGINEERING.
- ALCOHOL OR FOMBLIN YVAC 3 MAY BE USED TO LUBRICATE O-RINGS FOR VACUUM HELIUM LEAK TESTING.
- 1601-NW40 ONLY SHIPS INSTALLED AND LEAK TESTED, PER NOTE 1, IN ITEM 6 (NW40 ADAPTER) AND DOES NOT INCLUDE ITEM 5 (JAM NUT).



ITEM	QTY	PART NUMBER	DESCRIPTION
6	1	5119	HOUSING NW40-SS VS15 ADAPTER
5	1	0183	NUT VS15-SS
4	1	-215 VITON	O-RING -215 VITON 75
3	9	KT20	CABLE T/C TYPE K 20AWG TEFLON
2	A/R	PAVE-Seal 150	EPOXY BLACK
1	1	0161	HOUSING VS15L-SS

PAVE technology co.

2751 Thunderhawk Court
Dayton, OH 45414-3445
U.S.A.
tel (937) 890-1100
fax (937) 8905165
www.pavetechnologyco.com

DESCRIPTION
SEE TABLE

PART NUMBER *SEE TABLE & NOTE 11
1601*

MATERIAL NOTED
REVISION LEVEL J

PROJECTION

ALL DIMENSIONS AND TOLERANCES APPLY TO FINISHED PART IN INCHES.
 ALLOWABLE TOLERANCES UNLESS SPECIFIED OTHERWISE: NONE \pm 0.5
 X.X DECIMAL \pm 0.1 X.XX DECIMAL \pm 0.02 X.XXX DECIMAL \pm 0.005
 ANGLES \pm 1 DEGREE SURFACE FINISH 128 microinch RMS