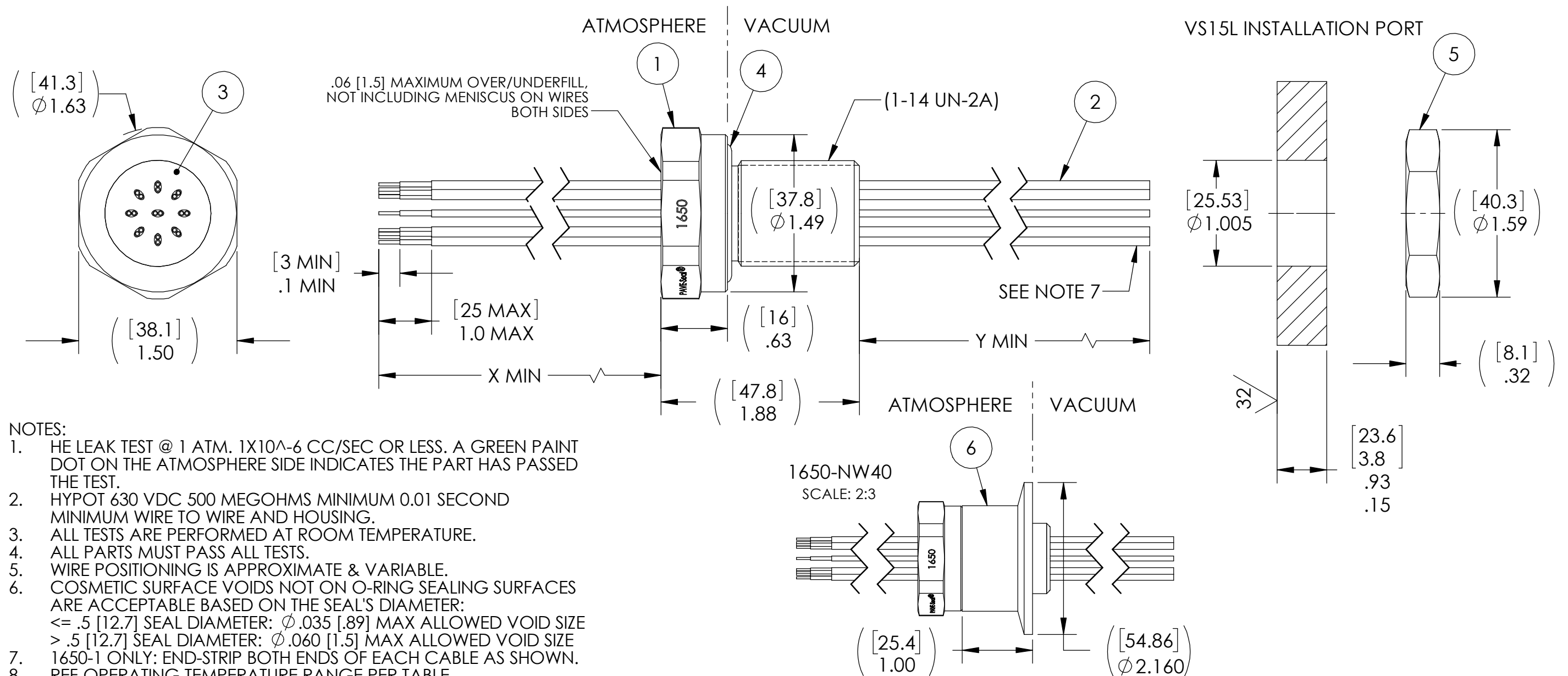


PAVE#	X	Y	ITEM 4	ITEM 4 DESCRIPTION	TEMPERATURE
1650	48[1219]	48[1219]	-215 VITON	O-RING -215 VITON 75	-20°C TO 125°C
1650-1	60[1524]	60[1524]	-215 VITON	O-RING -215 VITON 75	-20°C TO 125°C
1650-2	120[3048]	60[1524]	-215 NM304-75	O-RING -215 NITRILE LOW TEMP 75	-54°C TO 121°C
1650-3	168[4267]	12[305]	-215 NM304-75	O-RING -215 NITRILE LOW TEMP 75	-54°C TO 121°C
1650-NW40	48[1219]	48[1219]	-215 VITON	O-RING -215 VITON 75	-20°C TO 125°C



NOTES:

1. HE LEAK TEST @ 1 ATM. 1X10⁻⁶ CC/SEC OR LESS. A GREEN PAINT DOT ON THE ATMOSPHERE SIDE INDICATES THE PART HAS PASSED THE TEST.
2. HYPOT 630 VDC 500 MEGOHMS MINIMUM 0.01 SECOND MINIMUM WIRE TO WIRE AND HOUSING.
3. ALL TESTS ARE PERFORMED AT ROOM TEMPERATURE.
4. ALL PARTS MUST PASS ALL TESTS.
5. WIRE POSITIONING IS APPROXIMATE & VARIABLE.
6. COSMETIC SURFACE VOIDS NOT ON O-RING SEALING SURFACES ARE ACCEPTABLE BASED ON THE SEAL'S DIAMETER:
 <= .5 [12.7] SEAL DIAMETER: ϕ .035 [.89] MAX ALLOWED VOID SIZE
 > .5 [12.7] SEAL DIAMETER: ϕ .060 [1.5] MAX ALLOWED VOID SIZE
7. 1650-1 ONLY: END-STRIP BOTH ENDS OF EACH CABLE AS SHOWN.
8. REF-OPERATING TEMPERATURE RANGE PER TABLE.
9. PAVE-SEAL CAN BE A BI-DIRECTIONAL HERMETIC SEAL FOR VACUUM AND MOST PRESSURES. FOR PRESSURES ABOVE 150 PSI (10 BAR), CHECK WITH SALES ENGINEERING.
10. DIMENSIONS ARE INCHES [millimeters].
11. ALCOHOL OR FOMBLIN YVAC 3 MAY BE USED TO LUBRICATE O-RINGS FOR VACUUM HELIUM LEAK TESTING.
12. 1650-NW40 ONLY: SHIPS INSTALLED AND LEAK TESTED, PER NOTE 1, IN ITEM 6 (NW40 ADAPTER), AND DOES NOT INCLUDE ITEM 5 (JAM NUT).

ITEM	QTY	PART NUMBER	DESCRIPTION
6	1	5119	HOUSING NW40-SS VS15 ADAPTER
5	1	0183	NUT VS15-SS
4	1	SEE TABLE	O-RING -215 VITON 75
3	A/R	PAVE-Seal 150	EPOXY BLACK
2	9	TT20	CABLE T/C TYPE T #20 TEFLON
1	1	0161	HOUSING VS15L-SS

2751 Thunderhawk Court
Dayton, OH 45414-3445
U.S.A.
tel (937) 890-1100
fax (937) 8905165
www.pavetechnologyco.com

PAVE technology co.

DESCRIPTION
VS15L-SS-150-9P-TT20-X-Y

PART NUMBER
1650

MATERIAL NOTED

REVISION LEVEL
M

PROJECTION

ALL DIMENSIONS AND TOLERANCES APPLY TO FINISHED PART IN INCHES.
 ALLOWABLE TOLERANCES UNLESS SPECIFIED OTHERWISE: NONE ± 0.5
 X.X DECIMAL ± 0.1 X.XX DECIMAL ± 0.02 X.XXX DECIMAL ± 0.005
 ANGLES ± 1 DEGREE. SURFACE FINISH 128 microinch RMS