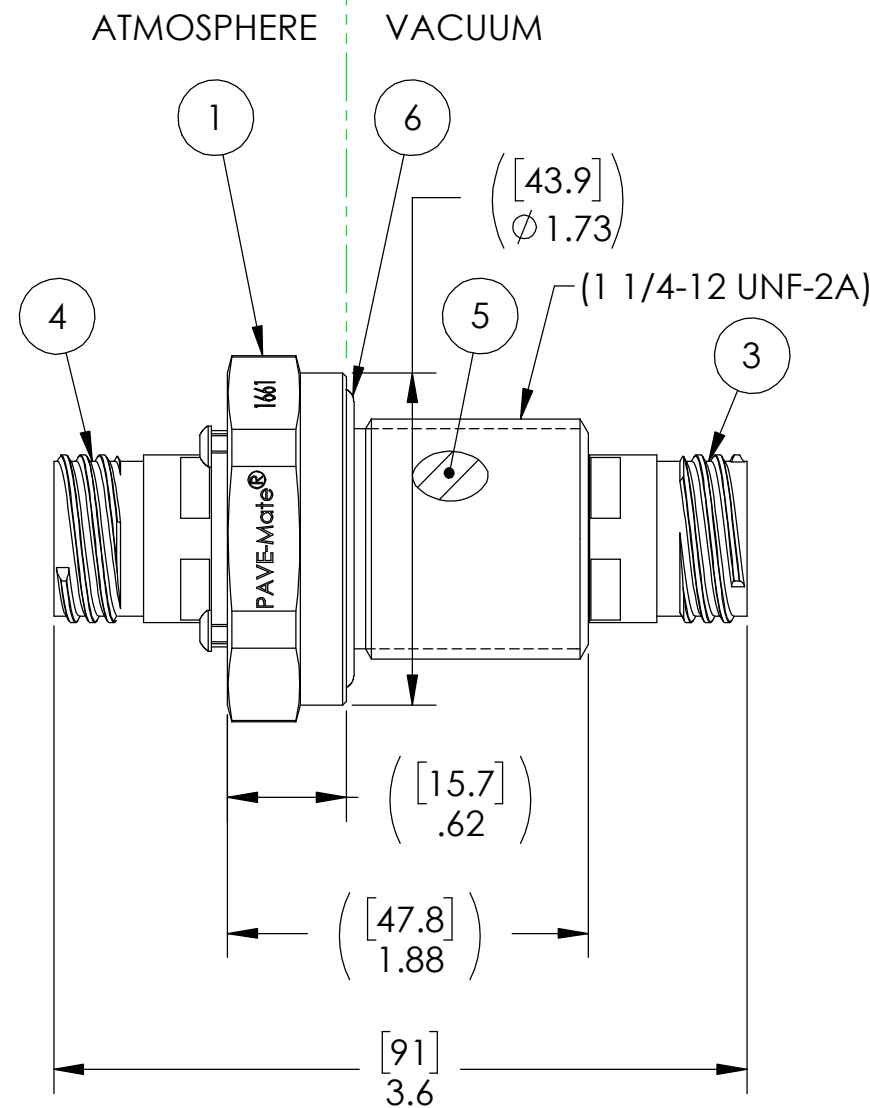
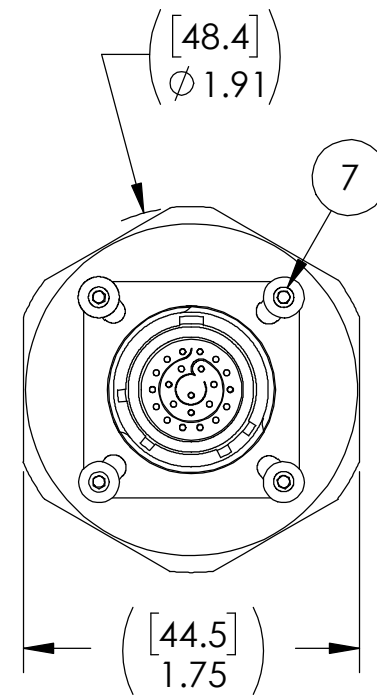
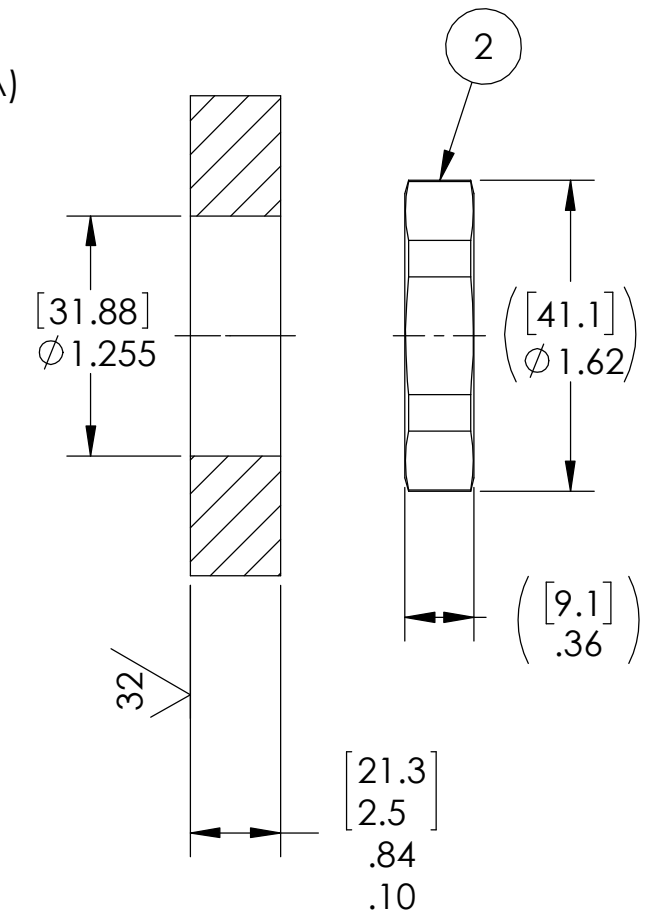


1661-RE	20FC35SE	20FC35PE	VS18-SS-150-22-22-99920PSE
1661-RD	20FC35SD	20FC35PD	VS18-SS-150-22-22-99920PSD
1661-RC	20FC35SC	20FC35PC	VS18-SS-150-22-22-99920PSC
1661-RB	20FC35SB	20FC35PB	VS18-SS-150-22-22-99920PSB
1661-RA	20FC35SA	20FC35PA	VS18-SS-150-22-22-99920PSA
1661-RN	20FC35SN	20FC35PN	VS18-SS-150-22-22-99920PS
1661-E	20FC35PE	20FC35SE	VS18-SS-150-22-22-99920SPE
1661-D	20FC35PD	20FC35SD	VS18-SS-150-22-22-99920SPD
1661-C	20FC35PC	20FC35SC	VS18-SS-150-22-22-99920SPC
1661-B	20FC35PB	20FC35SB	VS18-SS-150-22-22-99920SPB
1661-A	20FC35PA	20FC35SA	VS18-SS-150-22-22-99920SPA
1661-N	20FC35PN	20FC35SN	VS18-SS-150-22-22-99920SP
PAVE#	ITEM 3	ITEM 4	DESCRIPTION



VS18 INSTALLATION PORT



NOTES:

- HE LEAK TEST @ 1 ATM. 1X10⁻⁷ CC/SEC OR LESS. A GREEN PAINT DOT ON THE ATMOSPHERE SIDE INDICATES THE PART HAS PASSED THE TEST.
- HYPOT 1000 VDC 500 MEGOHMS MINIMUM 0.01 SECOND MINIMUM PIN TO PIN AND HOUSING WITH MATING CONNECTORS.
- CONTINUITY TEST < 1.0 OHM PIN TO SOCKET WITH MATING CONNECTORS.
- ALL TESTS ARE PERFORMED AT ROOM TEMPERATURE.
- ALL PARTS MUST PASS ALL TESTS.
- DIMENSIONS ARE INCHES [millimeters].
- COSMETIC SURFACE VOIDS NOT ON O-RING SEALING SURFACES ARE ACCEPTABLE BASED ON THE SEAL'S DIAMETER:
 <= .5 [12.7] SEAL DIAMETER: ϕ .035 [.89] MAX ALLOWED VOID SIZE
 > .5 [12.7] SEAL DIAMETER: ϕ .060 [1.5] MAX ALLOWED VOID SIZE
- REF-OPERATING TEMPERATURE RANGE -20°C TO 125°C.
- PAVE-SEAL CAN BE A BI-DIRECTIONAL HERMETIC SEAL FOR VACUUM AND MOST PRESSURES. FOR PRESSURES ABOVE 150 PSI (10 BAR), CHECK WITH SALES ENGINEERING.
- ALCOHOL OR FOMBLIN YVAC 3 MAY BE USED TO LUBRICATE O-RINGS FOR VACUUM HELIUM LEAK TESTING.
- ITEMS 8, 9, & 10 ARE INCLUDED, BUT NOT SHOWN, UNLESS "NP" IS ADDED TO THE PART NUMBER AND DESCRIPTION (NO PLUGS).
- THE PART NUMBER FOR ITEMS 8 & 9 WILL BE APPENDED WITH A "N", "A", "B", "C", "D", OR "E", MATCHING THE ASSEMBLY CLOCKING.

ITEM	QTY	PART NUMBER	DESCRIPTION
10	2	M85049/38-13N	SEE NOTE 11 STRAIN RELIEF 38999 STRAIGHT SHELL SIZE 13 NICKEL PLATED ALUMINUM
9	1	26FC35P*	SEE NOTE 11 & *NOTE 12 PLUG 22#22 PINS NICKEL PLATED ALUMINUM SHELL GOLD PLATED COPPER ALLOY CRIMP CONTACTS
8	1	26FC35S*	SEE NOTE 11 & *NOTE 12 PLUG 22#22 SOCKETS NICKEL PLATED ALUMINUM SHELL GOLD PLATED COPPER ALLOY CRIMP CONTACTS
7	4	4-40X.25 BHCS-SS	SCREW 4-40X.25 BHCS SS
6	1	-219 VITON	O-RING -219 VITON 75
5	A/R	PAVE-Seal 150	EPOXY BLACK
4	1	SEE TABLE	RCPT 22#22 NICKEL PLATED ALUMINUM SHELL GOLD PLATED COPPER ALLOY CONTACTS
3	1	SEE TABLE	RCPT 22#22 NICKEL PLATED ALUMINUM SHELL GOLD PLATED COPPER ALLOY CONTACTS
2	1	1014	NUT VS18-SS
1	1	3389	HOUSING VS18-SS

PAVE technology co.
 2751 Thunderhawk Court
 Dayton, OH 45414-3445
 U.S.A.
 tel (937) 890-1100
 fax (937) 8905165
 www.pavetechnologyco.com

DESCRIPTION
SEE TABLE

PART NUMBER *SEE TABLE MATERIAL NOTED
1661-*

REVISION LEVEL D PROJECTION

ALL DIMENSIONS AND TOLERANCES APPLY TO FINISHED PART IN INCHES.
 ALLOWABLE TOLERANCES UNLESS SPECIFIED OTHERWISE: NONE ±0.5
 X.X DECIMAL ±0.1 X.XX DECIMAL ±0.02 X.XXX DECIMAL ±0.005
 ANGLES ±1 DEGREE SURFACE FINISH 128 microinch RMS