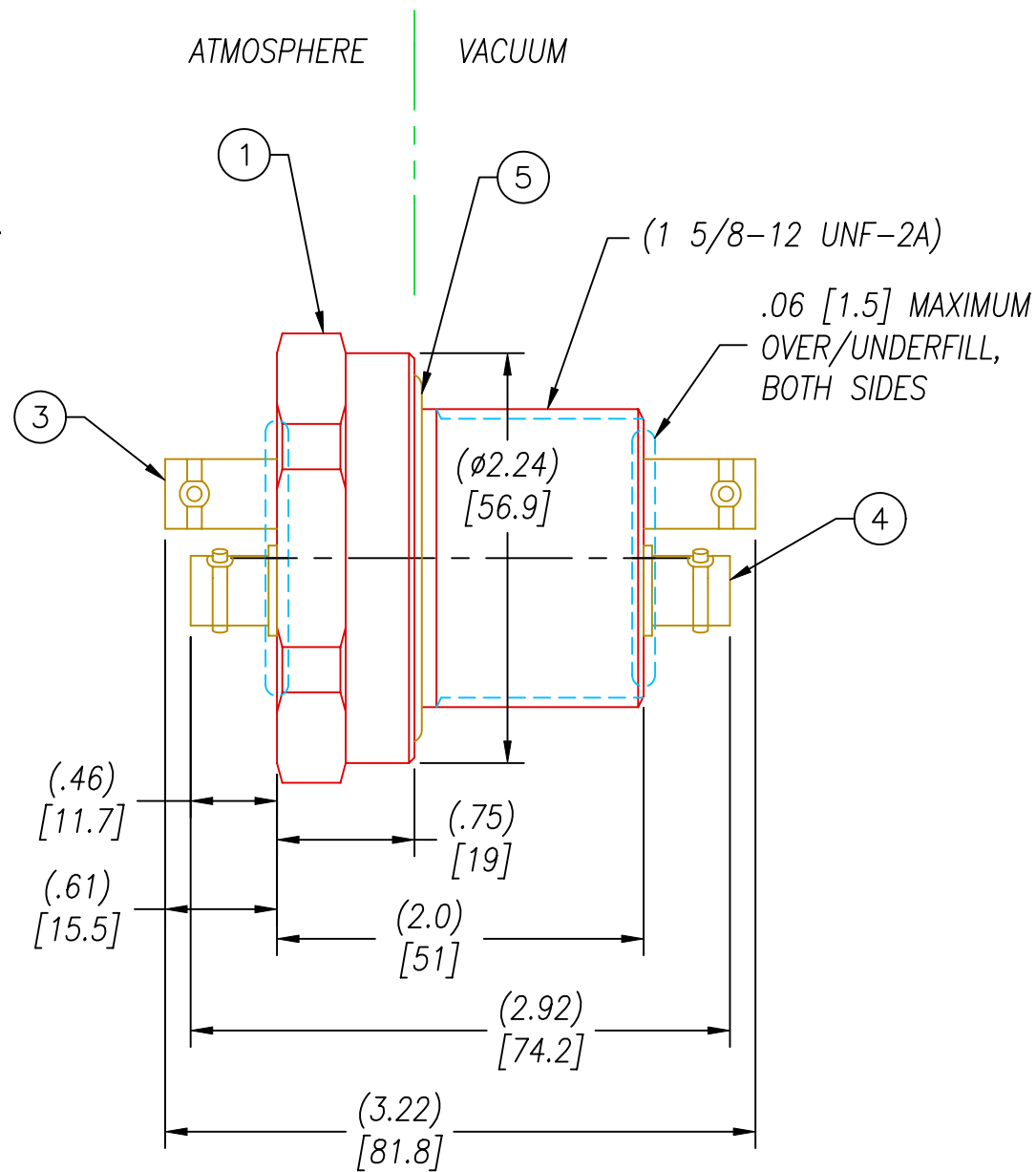
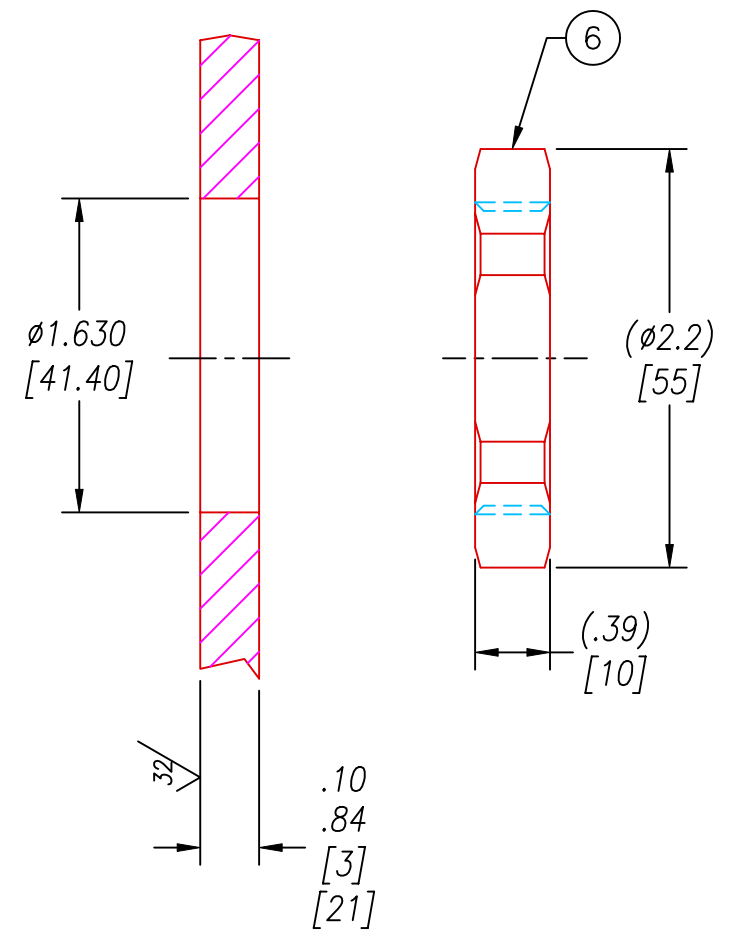


NOTES:

1. HE LEAK TEST VACUUM 1×10^{-8} CC/S OR LESS.
2. HYPOT 630 VDC 500 MΩ 0.01 SEC MINIMUM, CONDUCTOR TO CONDUCTOR, SHIELDS & HOUSING WITH MATING CONNECTORS. (SHIELDS ARE FLOATING)
3. CONTINUITY TEST W/MATING CONNECTORS: 1.0 OHM MAXIMUM CENTER CONDUCTORS & SHIELDS.
4. DC HYPOT TEST MHV'S (ITEM 3) ONLY: 5000 VDC 100 MΩ 0.01 SEC MINIMUM CONDUCTOR TO SHIELD W/MATING CONNECTORS.
5. THERMAL CYCLE PRIOR TO TESTING: 3 CYCLES, 105°C TO -40°C, 2 HOUR HOLD AT TEMPERATURE.
6. ALL TESTS DONE AT ROOM TEMPERATURE AFTER THERMAL CYCLE.
7. ALL PARTS MUST PASS ALL TESTS.
8. THESE PARTS ARE CLEANED IN A DEGREASER SOLVENT VAPOR THEN PACKAGED IN A LAMINAR FLOW HOOD PROVIDING AN ISO CLASS 5 (CLASS 100) ENVIRONMENT WITHIN THE WORK AREA.
9. COSMETIC SURFACE VOIDS NOT ON O-RING SEALING SURFACES ARE ACCEPTABLE BASED ON THE SEAL'S DIAMETER:
 $\leq .5$ [12.7] SEAL DIAMETER: $\phi .035$ [.89] MAX ALLOWED VOID SIZE
 $> .5$ [12.7] SEAL DIAMETER: $\phi .060$ [1.5] MAX ALLOWED VOID SIZE
10. PAVE-SEAL CAN BE A BI-DIRECTIONAL HERMETIC SEAL FOR VACUUM AND MOST PRESSURES. FOR PRESSURES ABOVE 150 PSI (10 BAR), CHECK WITH SALES ENGINEERING.



VS22 INSTALLATION PORT




6	1	0199	NUT VS22-SS
5	1	-224 VITON	O-RING -224 VITON 75
4	4	AMPH# 31-2221	RCPT COAX BNC
3	2	AMPH# 27000	RCPT COAX MHV
2	A/R	PAVE-Seal 150	EPOXY BLACK
1	1	0189/304SS	HOUSING VS22-304SS
ITEM	QTY	PART#	DESCRIPTION


 2751 Thunderhawk Court
 Dayton, Ohio 45414-3445
 U.S.A.
 (937)890-1100
 fax (937)890-5165
 www.pavetechnologyco.com

DESCRIPTION *PAVE-Mate® I Connectors*
VS22-SS-150-2/1-BNC/MHV-BNC/MHV

PART NUMBER
1699

REVISION LEVEL
L
 PROJECTION 

ALL DIMENSIONS AND TOLERANCES APPLY TO FINISHED PART IN INCHES
 ALLOWABLE TOLERANCES UNLESS SPECIFIED OTHERWISE: NONE +/-0.5
 .X DECIMAL +/- 0.1 .XX DECIMAL +/- 0.02 .XXX DECIMAL +/-0.005
 ANGLES +/- 1 DEG SURFACE FINISH 128 microinch RMS