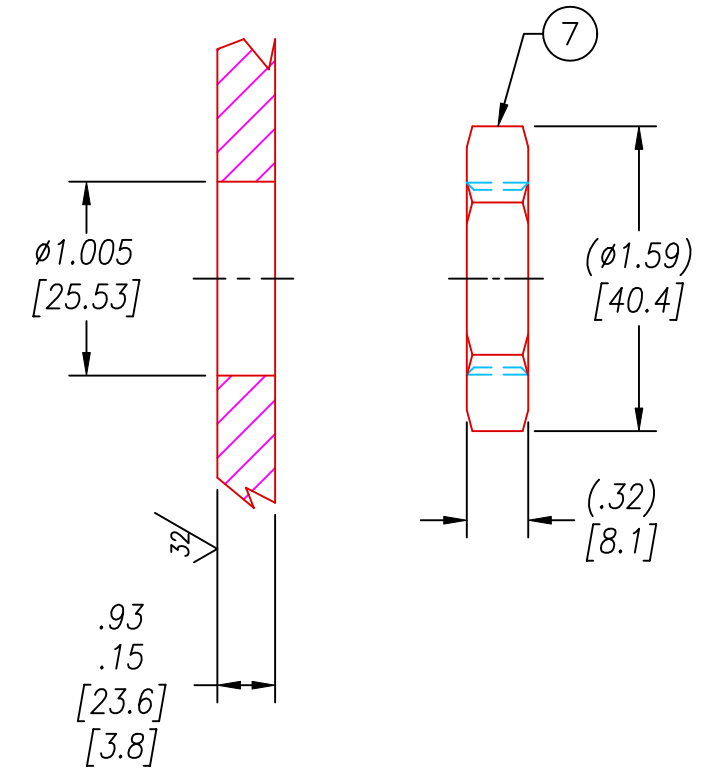


VS15L INSTALLATION PORT



NOTES:

1. 1890 ONLY: HE LEAK TEST @1 ATM. 1×10^{-6} CC/S OR LESS. A GREEN PAINT DOT INDICATES PART HAS PASSED THE TEST.
2. 1890-1 ONLY: HE LEAK TEST @ 700 PSI, 30 SECONDS MINIMUM, SNIFFER TEST 1×10^{-4} CC/S OR LESS. A GREEN PAINT DOT INDICATES THE PART HAS PASSED THE TEST.
3. HYPOT 630 VDC 500 MΩ 0.01 SEC MINIMUM, WIRE TO WIRE & HOUSING.
4. ALL TESTS ARE PERFORMED AT ROOM TEMPERATURE.
5. ALL PARTS MUST PASS ALL TESTS.
6. WIRES ARE NOT REQUIRED TO BEND SHARPLY AT EPOXY SEAL SURFACE.
7. COSMETIC SURFACE VOIDS SMALLER THAN $\phi 0.035$ [0.89] ARE ACCEPTABLE.
8. WIRE POSITIONING IS APPROXIMATE & VARIABLE.
9. REF-OPERATING TEMPERATURE RANGE SEE TABLE.
10. DIMENSIONS ARE INCHES [millimeters].
11. ALCOHOL OR FOMBLIN YVAC 3 MAY BE USED TO LUBRICATE O-RINGS FOR VACUUM HELIUM LEAK TESTING.
12. PAVE-SEAL CAN BE A BI-DIRECTIONAL HERMETIC SEAL FOR VACUUM AND MOST PRESSURES. FOR PRESSURES ABOVE 150 PSI (10 BAR), CHECK WITH SALES ENGINEERING.

PAVE#	ITEM 6 PART#	ITEM 6 DESCRIPTION	TEMPERATURE RANGE
1890	-215 VITON	O-RING -215 VITON 75	-20°C TO 125°C
1890-1	-215 VITON LT	O-RING -215 VITON LOW-TEMP 75	-40°C TO 125°C

7	1	0183	NUT VS15-SS
6	1	SEE TABLE	SEE TABLE
5	A/R	PAVE-Seal 150	EPOXY BLACK
4	1	EE12 GREEN	WIRE 12EE MIL-W-16878/5 .017 19/#25
3	1	EE12 WHITE	WIRE 12EE MIL-W-16878/5 .017 19/#25
2	1	EE12 BLACK	WIRE 12EE MIL-W-16878/5 .017 19/#25
1	1	0161	HOUSING VS15L-SS
ITEM	QTY	PART#	DESCRIPTION

2751 Thunderhawk Court
 Dayton, Ohio 45414-3445
 U.S.A.
 (937)890-1100
 fax (937)890-5165
 www.pavetechnologyco.com

DESCRIPTION *PAVE-Seal@ Cable Harnesses*
VS15L-SS-150-3-TEE12-24-24
 PART NUMBER
1890
 REVISION LEVEL **D**
 PROJECTION

ALL DIMENSIONS AND TOLERANCES APPLY TO FINISHED PART IN INCHES
 ALLOWABLE TOLERANCES UNLESS SPECIFIED OTHERWISE: NONE +/-0.5
 .X DECIMAL +/- 0.1 .XX DECIMAL +/- 0.02 .XXX DECIMAL +/-0.005
 ANGLES +/- 1 DEG SURFACE FINISH 128 microinch RMS