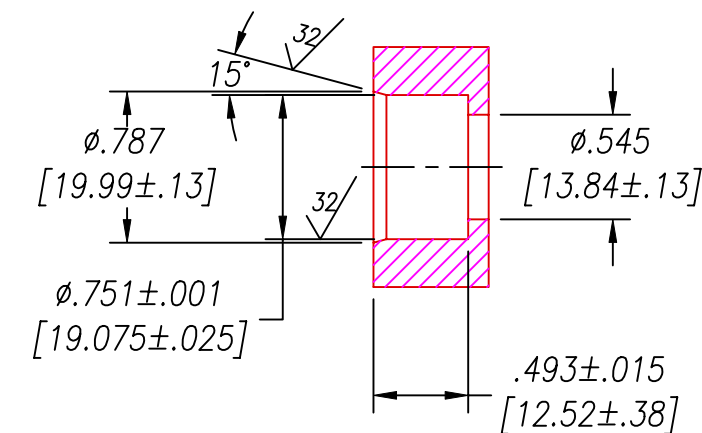


**NOTES:**

1. LEAK TEST: PRESSURE PER TABLE, NO BUBBLES 5 SECONDS MINIMUM. A GREEN PAINT DOT ON THE PRESSURE SIDE INDICATES THE PART HAS PASSED THE TEST.
2. HYPOT 630 VDC 500 MΩ 0.01 SEC MINIMUM, CUP TO CUP.
3. ALL TESTS ARE PERFORMED AT ROOM TEMPERATURE.
4. ALL PARTS MUST PASS ALL TESTS.
5. REFERENCE- OPERATING TEMPERATURE RANGE -20°C TO 155°C.
6. PART NUMBER 1962-2 DOES NOT INCLUDE ITEM 6 (RETAINING RING).
7. COSMETIC SURFACE VOIDS NOT ON O-RING SEALING SURFACES ARE ACCEPTABLE BASED ON THE SEAL'S DIAMETER:  
 <= .5 [12.7] SEAL DIAMETER: 0.035 [.89] MAX ALLOWED VOID SIZE  
 > .5 [12.7] SEAL DIAMETER: 0.060 [1.5] MAX ALLOWED VOID SIZE
8. PAVE-SEAL CAN BE A BI-DIRECTIONAL HERMETIC SEAL FOR VACUUM AND MOST PRESSURES. FOR PRESSURES ABOVE 150 PSI (10 BAR), CHECK WITH SALES ENGINEERING.
9. DIMENSIONS ARE INCHES [millimeters].
10. REFERENCE- PART NUMBER 1962 SHALL COMPLY WITH THE REQUIREMENTS OF MIL-M-19595 NON CONTACT COMPONENT. 100% INSPECTION REQUIRED AND PERFORMED BY THE CUSTOMER. CAUTION: CONTAMINATION OF ITEMS DURING FABRICATION AND PACKAGING BY CONTACT WITH MAGNETIC MATERIALS SUCH AS MAGNETS, IRON, METAL FILINGS OR ANY OBJECT THAT CAN GENERATE A MAGNETIC FIELD MAY CAUSE THE ITEM/PRODUCT TO BE REJECTED.

PAVE#	SC ITEM#	PRESSURE	INSTALLATION PORT
1962	ITEM 4	80 PSI	EITHER
1962-1	ITEM 5	80 PSI	EITHER
1962-2	ITEM 5	1500 PSI	HIGH PRESSURE

**HIGH PRESSURE SPF12 INSTALLATION PORT**



ITEM	QTY	PART#	DESCRIPTION
6	1	RR 5100-75-HST	RETAINING RING EXTERNAL .750SS
5	24	AMP #66569	CONTACT SOLDER CUP #20 Sn/Ni PLATED BRONZE
4	24	1986	CONTACT SOLDER CUP #20 BARE COPPER
3	A/R	PARKER O-LUBE	LUBRICANT O-RING BARIUM-BASED
2	1	-016 VITON	O-RING -016 VITON 75
1	1	0130	HOUSING SPF12-E

2751 Thunderhawk Court  
Dayton, Ohio 45414-3445  
U.S.A.  
(937)890-1100  
fax (937)890-5165  
www.pavetechnologyco.com

**PAVE technology co.**

DESCRIPTION PAVE-Mate@ I Connectors  
SPF12-E-200-12-22-SC-SC

PART NUMBER \*SEE TABLE & NOTE 6  
1962\*

REVISION LEVEL H  
PROJECTION

ALL DIMENSIONS AND TOLERANCES APPLY TO FINISHED PART IN INCHES  
ALLOWABLE TOLERANCES UNLESS SPECIFIED OTHERWISE: NONE +/-0.5  
.X DECIMAL +/- 0.1 .XX DECIMAL +/- 0.02 .XXX DECIMAL +/-0.005  
ANGLES +/- 1 DEG SURFACE FINISH 128 microinch RMS