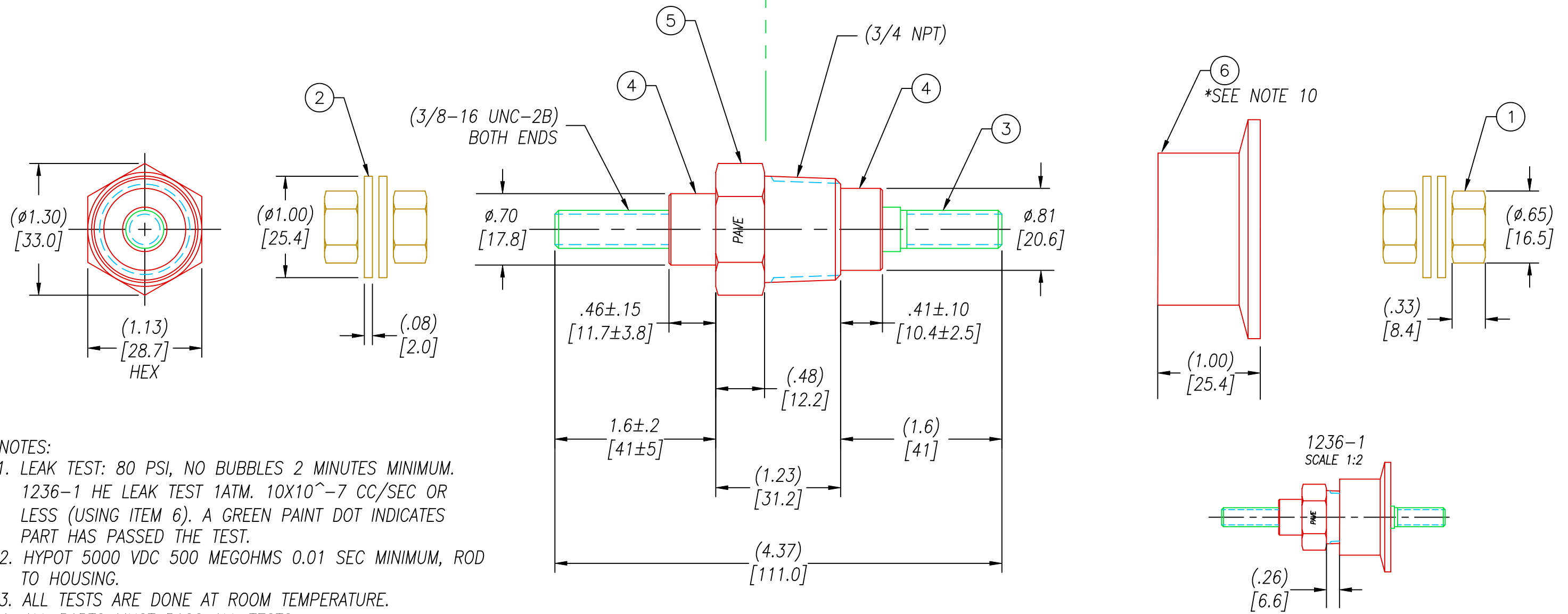


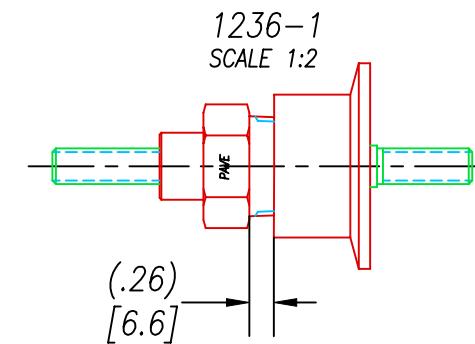
ATMOSPHERE | PRESSURE/VACUUM
*SEE NOTE 1



- NOTES:
1. LEAK TEST: 80 PSI, NO BUBBLES 2 MINUTES MINIMUM. 1236-1 HE LEAK TEST 1ATM. 10×10^{-7} CC/SEC OR LESS (USING ITEM 6). A GREEN PAINT DOT INDICATES PART HAS PASSED THE TEST.
 2. HYPOT 5000 VDC 500 MEGOHMS 0.01 SEC MINIMUM, ROD TO HOUSING.
 3. ALL TESTS ARE DONE AT ROOM TEMPERATURE.
 4. ALL PARTS MUST PASS ALL TESTS.
 5. MAXIMUM AMPERAGE: 150, MAXIMUM VOLTAGE 10,000 VDC.
 6. NO VOIDS LARGER THAN $\phi.035$ [.89] ARE ACCEPTABLE.
 7. DIMENSIONS ARE INCHES [millimeters].
 8. USE TWO WRENCHES TORQUED IN OPPOSITE DIRECTIONS TO REDUCE TORQUE TRANSFERRED TO ASSEMBLY.
 9. PAVE-SEAL CAN BE A BI-DIRECTIONAL HERMETIC SEAL FOR VACUUM AND MOST PRESSURES. FOR PRESSURES ABOVE 150 PSI (10 BAR), CHECK WITH SALES ENGINEERING.
 10. 1236-1 TO BE SHIPPED MOUNTED TO ITEM 6 WITH TEFLON THREAD PIPE TAPE.

6	1	4727	*SEE NOTE 10	NW40-SS FOR PT12
5	1	1104		HOUSING PT12-SS
4	A/R	PAVE-Seal 200HV		EPOXY BLUE
3	1	0049		ROD .375" COPPER HI CURRENT
2	4	BRASS WASH 3/8"		WASHER 3/8" BRASS
1	4	BRASS NUTS 3/8"		NUTS 3/8-16 BRASS HEX
ITEM	QTY	PART#		DESCRIPTION

ALL DIMENSIONS AND TOLERANCES APPLY TO FINISHED PART IN INCHES
 ALLOWABLE TOLERANCES UNLESS SPECIFIED OTHERWISE: NONE +/-0.5
 .X DECIMAL +/- 0.1 .XX DECIMAL +/- 0.02 .XXX DECIMAL +/-0.005
 ANGLES +/- 1 DEG SURFACE FINISH 128 microinch RMS



PAVE STOCK NUMBER: STK 2B

PAVE technology co. 2751 Thunderhawk Court
 Dayton, Ohio 45414-3445
 U.S.A.
 (937)890-1100
 fax (937)890-5165
 www.pavetechnologyco.com

DESCRIPTION
 PT12-SS-200HV-.38Cu-1.6-1.6

PART NUMBER
 1236

REVISION LEVEL
 J
 PROJECTION