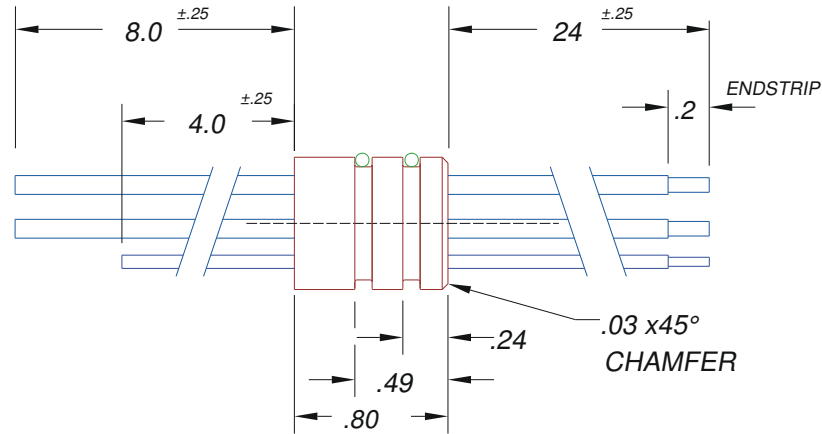
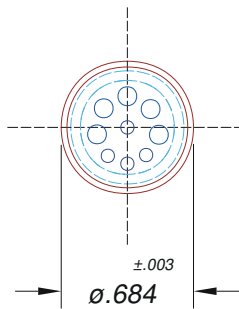
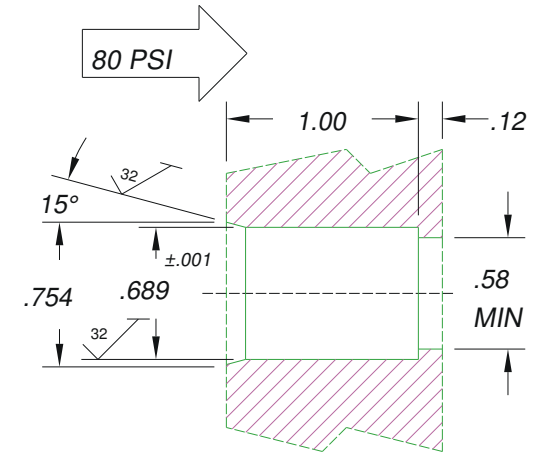


WIRE POSITIONS SHOWN
IN APPROXIMATE LOCATION



LEAK TEST PORT
FOR REFERENCE ONLY



Design Library

NOTES:

1. LEAK TEST @ 80 PSI, 2 MINUTES WITH LESS THAN .0001 cc/s BUBBLING.
2. ELECTRICAL TEST @ 630 VDC FOR 500 MEGOHMS FOR .01S BETWEEN WIRES.



TITLE OR PAVE ORDER CODE

SP11M-E-80-5/4-TE14/18-8/4-24

PART NUMBER

1375

PROJECTION

