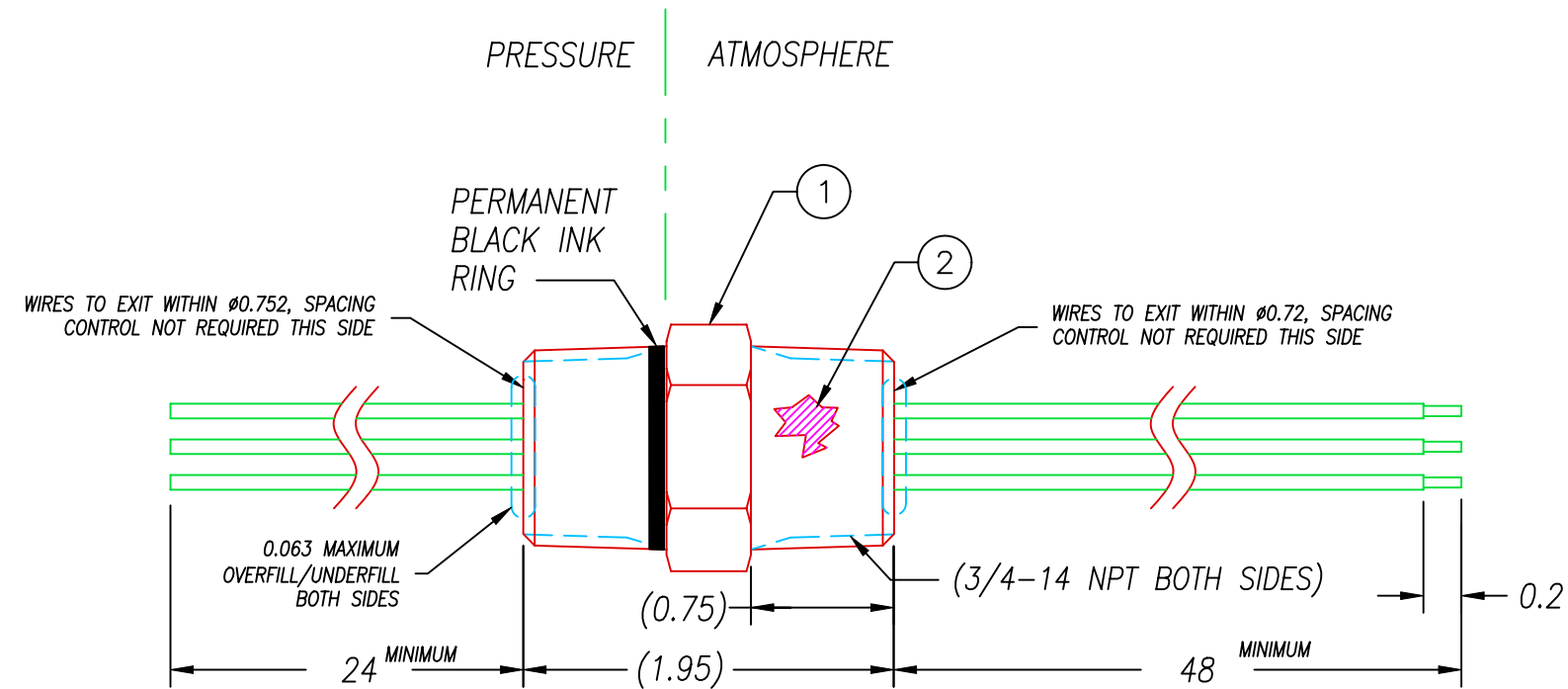
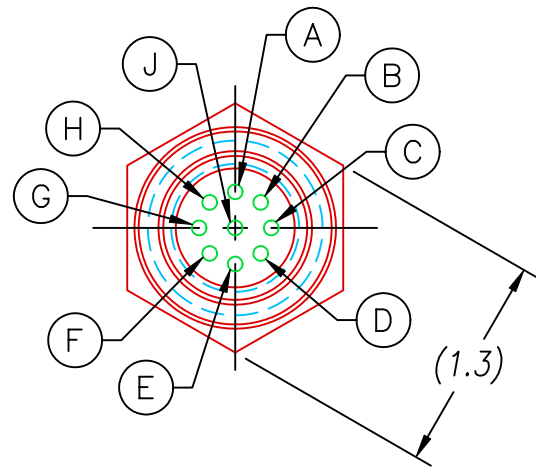


APPROXIMATE
WIRE LOCATIONS



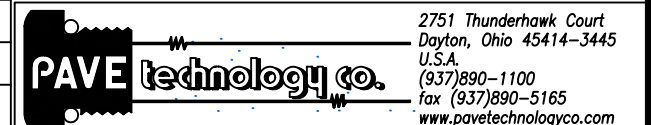
1752-2	A-C	D-F	G-J		519016
1752-1	A-F			G-J	519015
1752	A-C	D-F	G-J		419318
PT #	ITEM 3	ITEM 4	ITEM 5	ITEM 6	DEMAG PT#

NOTES:

1. LEAK TEST: 80 PSI, NO BUBBLES 3.5 MINUTES MINIMUM.
2. HYPOT 630 VDC 500 MΩ 0.01 SEC MINIMUM, WIRE TO WIRE & HOUSING.
3. ALL TESTS ARE PERFORMED AT ROOM TEMPERATURE.
4. PERCENTAGE OF PARTS TESTED WILL BE 100% (MAY BE A LESSER PERCENTAGE FOR LARGE PRODUCTION QUANTITIES, UNLESS OTHERWISE NOTED OR REQUIRED).
5. WIRES ARE NOT REQUIRED TO BEND SHARPLY AT EPOXY SEAL SURFACE.
6. NO VOIDS LARGER THAN $\phi 0.035$ ARE ACCEPTABLE.
7. RECOMMENDED INSTALLATION PORT: 3/4-14 NPT THREAD. ADD TEFLON TAPE TO MALE THREADS.

6	SEE TABLE	EE18 MIL RED	WIRE 18EE MIL-W-16878/5 .015 7/#26
5	SEE TABLE	EE18 MIL GRN	WIRE 18EE MIL-W-16878/5 .015 7/#26
4	SEE TABLE	EE18 MIL BLK	WIRE 18EE MIL-W-16878/5 .015 7/#26
3	SEE TABLE	EE18 MIL WHITE	WIRE 18EE MIL-W-16878/5 .015 7/#26
2	A/R	PAVE-Seal 200	EPOXY BLACK
1	1	0073	HOUSING PTN12-SS
ITEM	QTY	PART NUMBER	DESCRIPTION

ALL DIMENSIONS AND TOLERANCES APPLY TO FINISHED PART IN INCHES
 ALLOWABLE TOLERANCES UNLESS SPECIFIED OTHERWISE: NONE +/-0.5
 .X DECIMAL +/- 0.1 .XX DECIMAL +/- 0.02 .XXX DECIMAL +/-0.005
 ANGLES +/- 1 DEG SURFACE FINISH 128 microinch RMS



DESCRIPTION PAVE-Seal@ Cable Harnesses
 PTN12-SS-200-9-TEE18-24-48

PART NUMBER
 1752

REVISION LEVEL B
 PROJECTION