

NOTES:

1. LEAK TEST: 80 PSI, NO BUBBLES 5.5 MINUTES MINIMUM.
FIRST ARTICLES ONLY: 10^{-5} cc/sec HELIUM @ ATM.
2. HYPOT 630 VDC 500 M .01 SEC MINIMUM, WIRE TO WIRE.
3. ALL TESTS ARE PERFORMED AT ROOM TEMPERATURE.
4. ALL SPECIFICATIONS AND TESTS SUPERSEDE PAVE CATALOG SPECIFICATIONS.
5. CONTINUITY TEST DRAIN WIRE TO INSTALLATION PORT: 10^{-5} .

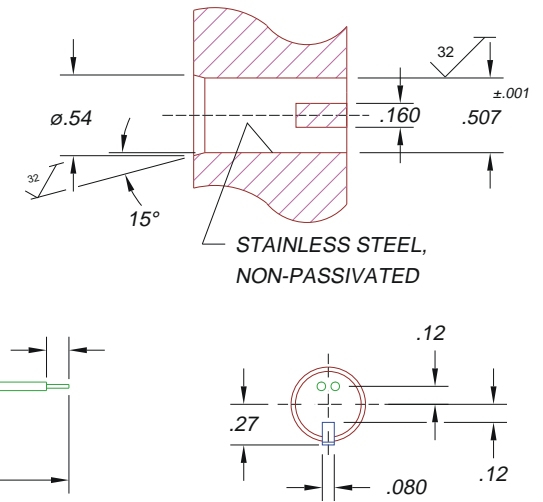
W

5	1	1972	CONTACT GROUNDING SPRING .080
4	1	1226-S	HOUSING SP8S-E
3	A/R	PARKER O-LUBE	LUBRICANT O-RING BARIUM
2	1	-012 BUNA	O-RING -012 BUNA 75
1	124"	PVC 2/C #22 TSJ	CABLE 22PVC BELDEN #8441 TSJP
ITEM	QTY	PART#	DESCRIPTION

ALL DIMENSIONS AND TOLERANCES APPLY TO FINISHED PART IN INCHES
 ALLOWABLE TOLERANCES UNLESS SPECIFIED OTHERWISE: NONE +/- .5
 .X DECIMAL +/- .1 .XX DECIMAL +/- .02 .XXX DECIMAL +/- .005
 ANGLES +/- 1 DEG SURFACE FINISH 128 microinch RMS

INSTALLATION PORT

REFERENCE ONLY



DESCRIPTION PAVE-Seal® Cable Harnesses
SP8A-E-80-1TJSP-PC22-120-3

PART NUMBER
1874

