

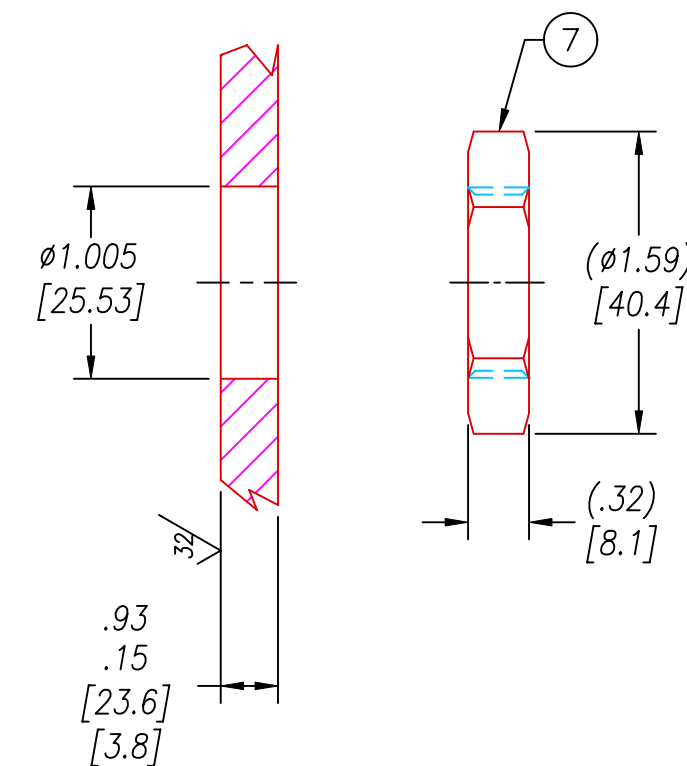
NOTES:

1. HE LEAK TEST @1 ATM.  $10 \times 10^{-7}$  CC/S OR LESS. A GREEN PAINT DOT INDICATES PART HAS PASSED THE TEST.
2. HYPOT 630 VDC 500 MΩ 0.01 SEC MINIMUM, WIRE TO WIRE & HOUSING.
3. ALL TESTS ARE PERFORMED AT ROOM TEMPERATURE.
4. ALL PARTS MUST PASS ALL TESTS.
5. WIRES ARE NOT REQUIRED TO BEND SHARPLY AT EPOXY SEAL SURFACE.
6. COSMETIC SURFACE VOIDS SMALLER THAN  $\phi 0.035$  [0.89] ARE ACCEPTABLE.
7. WIRE POSITIONING IS APPROXIMATE & VARIABLE.
8. DIMENSIONS ARE INCHES [millimeters].
9. ALCOHOL OR FOMBLIN YVAC 3 MAY BE USED TO LUBRICATE O-RINGS FOR VACUUM HELIUM LEAK TESTING.
10. PAVE-SEAL CAN BE A BI-DIRECTIONAL HERMETIC SEAL FOR VACUUM AND MOST PRESSURES. FOR PRESSURES ABOVE 150 PSI (10 BAR), CHECK WITH SALES ENGINEERING.

7	1	0183	NUT VS15-SS
6	1	-215 VITON	O-RING -215 VITON 75
5	A/R	PAVE-Seal 150	EPOXY BLACK
4	1	EE12 GREEN	WIRE 12EE MIL-W-16878/5 .017 19/#25
3	1	EE12 WHITE	WIRE 12EE MIL-W-16878/5 .017 19/#25
2	1	EE12 BLACK	WIRE 12EE MIL-W-16878/5 .017 19/#25
1	1	0161	HOUSING VS15L-SS
ITEM	QTY	PART#	DESCRIPTION

ALL DIMENSIONS AND TOLERANCES APPLY TO FINISHED PART IN INCHES  
 ALLOWABLE TOLERANCES UNLESS SPECIFIED OTHERWISE: NONE +/-0.5  
 .X DECIMAL +/- 0.1 .XX DECIMAL +/- 0.02 .XXX DECIMAL +/-0.005  
 ANGLES +/- 1 DEG SURFACE FINISH 128 microinch RMS

VS15L INSTALLATION PORT



**PAVE technology co.**  
 2751 Thunderhawk Court  
 Dayton, Ohio 45414-3445  
 U.S.A.  
 (937)890-1100  
 fax (937)890-5165  
 www.pavetechnologyco.com

DESCRIPTION PAVE-Seal@ Cable Harnesses  
 VS15L-SS-150-3-TEE12-24-24

PART NUMBER  
 1890

REVISION LEVEL C  
 PROJECTION