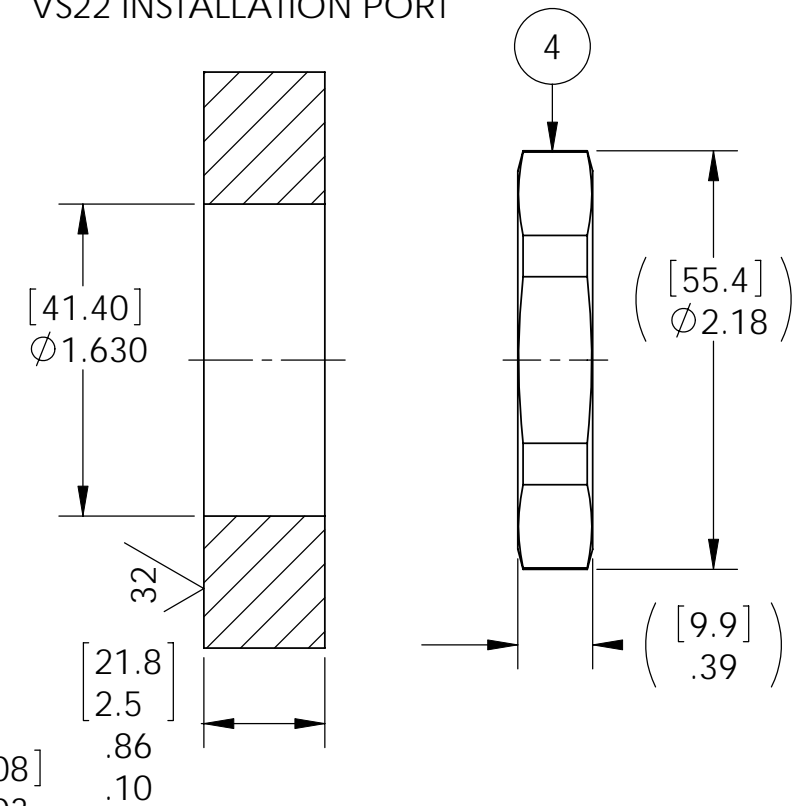


O-RING GROOVE
DETAIL A
SCALE 3 : 1

VS22 INSTALLATION PORT



NOTES:

1. LEAK TEST: 500 PSI, NO BUBBLES 2 MINUTES MINIMUM.
2. ALL TESTS ARE PERFORMED AT ROOM TEMPERATURE.
3. ALL PARTS MUST PASS ALL TESTS.
4. NO COSMETIC SURFACE VOIDS ARE ACCEPTABLE ON O-RING SEALING SURFACES, COSMETIC SURFACE VOIDS SMALLER THAN $\phi 0.035$ [.89] ARE ACCEPTABLE ON ALL OTHER SURFACES.
5. REF-OPERATING TEMPERATURE -20°C TO 125°C .
6. PAVE-SEAL CAN BE A BI-DIRECTIONAL HERMETIC SEAL FOR VACUUM AND MOST PRESSURES. FOR PRESSURES ABOVE 150 PSI (10 BAR), CHECK WITH SALES ENGINEERING.
7. DIMENSIONS ARE INCHES [millimeters].

ITEM	QTY	PART #	DESCRIPTION
4	1	0199	NUT VS22-SS (316SS)
3	1	0225	THREAD INSERT VS22-SS
2	1	-224 VITON	O-RING -224 VITON 75
1	A/R	PAVE-Seal 150	EPOXY BLACK

PAVE technology co.
 2751 Thunderhawk Court
 Dayton, OH 45414-3445
 U.S.A.
 tel (937) 890-1100
 fax (937) 8905165
 www.pavetechnologyco.com

DESCRIPTION VS22-E-150-PLUG	
PART NUMBER 2030	MATERIAL NOTED REVISION LEVEL B
PROJECTION ⊙ ◻	

ALL DIMENSIONS AND TOLERANCES APPLY TO FINISHED PART IN INCHES.
 ALLOWABLE TOLERANCES UNLESS SPECIFIED OTHERWISE: NONE ±0.5
 X.X DECIMAL ±0.1 X.XX DECIMAL ±0.02 X.XXX DECIMAL ±0.005
 ANGLES ±1 DEGREE SURFACE FINISH 128 microinch RMS