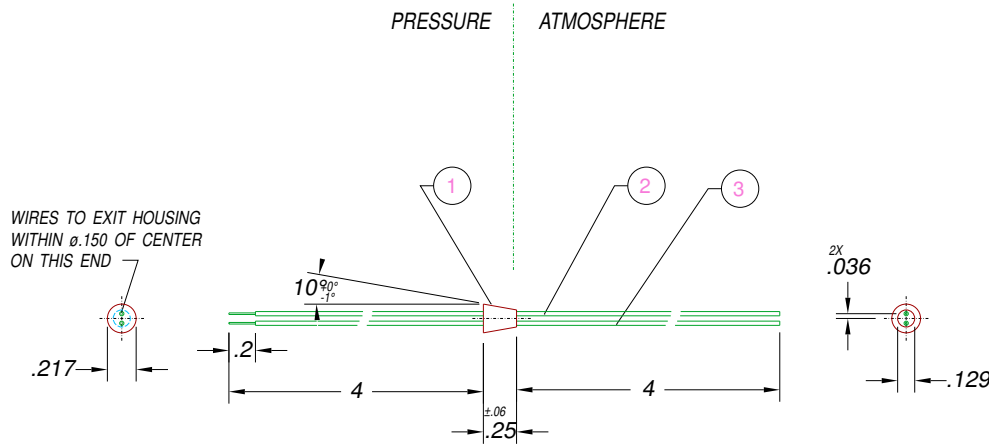
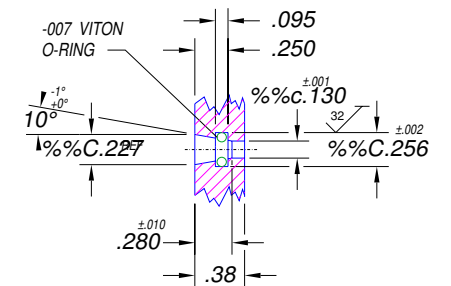
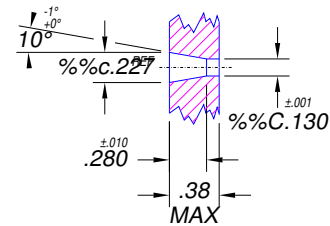


PAVE LEAK TEST PORT CONFIGURATION
 SHOWN FOR REF ONLY
 SEE NOTE 5 & 6



INSTALLATION BORE CONFIGURATION
 SEE NOTE 5, 6, & 7



NOTES:

1. LEAK TEST: 3000 PSI, NO BUBBLES, 2 MINUTES MIN.
2. HYPOT 300 VDC 250 MEGOHMS .01 SEC MINIMUM, WIRE TO WIRE & LEAK TEST PORT.
3. ALL TESTS ARE DONE AT ROOM TEMPERATURE.
4. THESE SPECIFICATIONS SUPERSEDE PAVE CATALOG.
5. REF-TAPERED BORE MAY BE MADE USING 5° PER SIDE TAPERED END MILL, 1/8" TIP, MODIFIED TO %%C.130±.001.
6. PAVE TO GRIT BLAST & CLEAN PART AFTER LEAK TESTING FOR CUSTOMER ADHESIVE BONDING.
7. ROUGH UP TAPERED BORE FOR ADHESIVE BOND.

3	1@9"	N20-38B-101-3	WIRE 30PC EXTRA FLEXIBLE 7/38 RED
2	1@9"	N20-38B-101-2	WIRE 30PC EXTRA FLEXIBLE 7/38 BLACK
1	A/R	PAVESeal 150	EPOXY BLACK
ITEM	QTY	PART#	DESCRIPTION

ALL DIMENSIONS AND TOLERANCES APPLY TO FINISHED PART IN INCHES
 ALLOWABLE TOLERANCES UNLESS SPECIFIED OTHERWISE: NONE +/- .5
 .X DECIMAL +/- .1 .XX DECIMAL +/- .02 .XXX DECIMAL +/- .005
 ANGLES +/- 1 DEG SURFACE FINISH 128 microinch RMS

PAVE Technology Co.

2751 Thunderhawk Court
 Dayton, Ohio 45414-3445
 U.S.A.
 (937)890-1100
 fax (937)890-5165
 www.pavetechnologyco.com

DESCRIPTION PAVE-Seal® Cable Harnesses
TP2-E-150-2-PC30-4-4

PART NUMBER 2033	PROJECTION
----------------------------	----------------