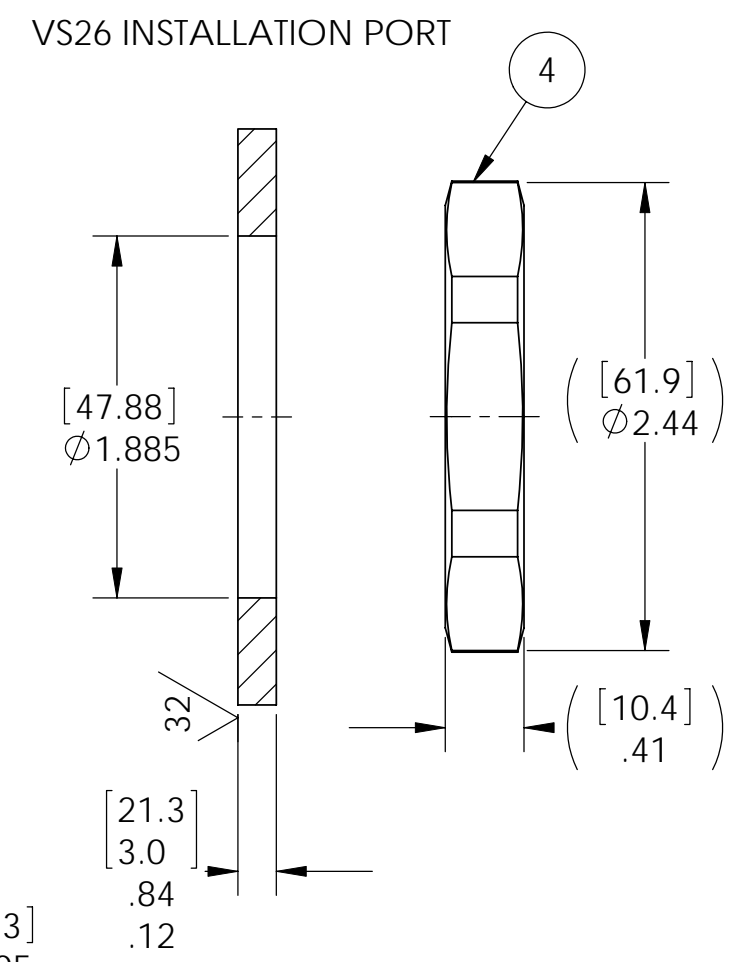


O-RING GROOVE  
DETAIL A  
SCALE 4 : 1



NOTES:

1. THE LEAK TEST VACUUM  $10 \times 10^{-7}$  CC/SEC OR LESS.
2. ALL TESTS ARE PERFORMED AT ROOM TEMPERATURE.
3. ALL PARTS MUST PASS ALL TESTS.
4. NO COSMETIC SURFACE VOIDS ARE ACCEPTABLE ON O-RING SEALING SURFACES, COSMETIC SURFACE VOIDS SMALLER THAN  $\phi 0.035$  [.89] ARE ACCEPTABLE ON ALL OTHER SURFACES.
5. REF-OPERATING TEMPERATURE  $-20^{\circ}\text{C}$  TO  $125^{\circ}\text{C}$ .
6. PAVE-SEAL CAN BE A BI-DIRECTIONAL HERMETIC SEAL FOR VACUUM AND MOST PRESSURES. FOR PRESSURES ABOVE 150 PSI (10 BAR), CHECK WITH SALES ENGINEERING.
7. DIMENSIONS ARE INCHES [millimeters].

ITEM	QTY	PART #	DESCRIPTION
4	1	0185	NUT VS26-SS
3	1	0222	THREAD INSERT VS26-SS
2	1	-226 VITON	O-RING -226 VITON 75
1	A/R	PAVE-Seal 150	EPOXY BLACK

ALL DIMENSIONS AND TOLERANCES APPLY TO FINISHED PART IN INCHES.  
ALLOWABLE TOLERANCES UNLESS SPECIFIED OTHERWISE: NONE  $\pm 0.5$   
X.X DECIMAL  $\pm 0.1$  X.XX DECIMAL  $\pm 0.02$  X.XXX DECIMAL  $\pm 0.005$   
ANGLES  $\pm 1$  DEGREE SURFACE FINISH 128 microinch RMS

**PAVE technology co.**  
2751 Thunderhawk Court  
Dayton, OH 45414-3445  
U.S.A.  
tel (937) 890-1100  
fax (937) 8905165  
www.pavetechnologyco.com

DESCRIPTION  
VS26-E-150-PLUG

PART NUMBER  
**2054**

MATERIAL NOTED

REVISION LEVEL  
B

PROJECTION