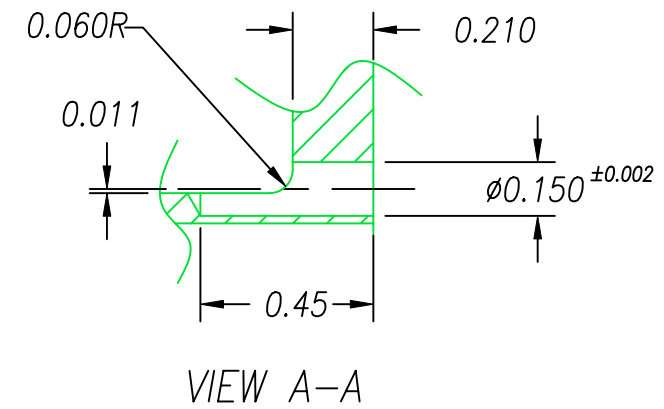
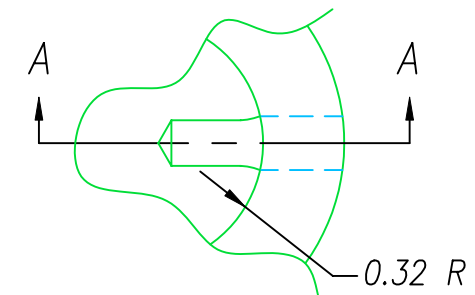


INSTALLATION PORT




NOTES:

1. QUALIFICATION PRESSURE TEST (FIRST ARTICLE ONLY): 480 PSI (SHORT SIDE), PART MUST STAY IN PORT DURING TEST (LEAKAGE ALLOWED).
2. HYPOT 630 VDC 500 MΩ .01 SEC MINIMUM, WIRE TO WIRE.
3. ALL TESTS ARE PERFORMED AT ROOM TEMPERATURE.

3	A/R	EN-1556 BLACK	URETHANE BLACK
2	A/R	PAVE-Seal 150	EPOXY BLACK
1	8'	CW3732REV1	CABLE 2XPC26
ITEM	QTY	PART#	DESCRIPTION

ALL DIMENSIONS AND TOLERANCES APPLY TO FINISHED PART IN INCHES  
 ALLOWABLE TOLERANCES UNLESS SPECIFIED OTHERWISE: NONE +/-0.5  
 .X DECIMAL +/- 0.1 .XX DECIMAL +/- 0.02 .XXX DECIMAL +/-0.005  
 ANGLES +/- 1 DEG SURFACE FINISH 128 microinch RMS


 2751 Thunderhawk Court  
 Dayton, Ohio 45414-3445  
 U.S.A.  
 (937)890-1100  
 fax (937)890-5165  
 www.pavetechnologyco.com

DESCRIPTION PAVE-Seal Cable Harnesses  
 TP-U-100-2C-CW3732REV1-.7-96

PART NUMBER	REVISION LEVEL
2128	B
PROJECTION	