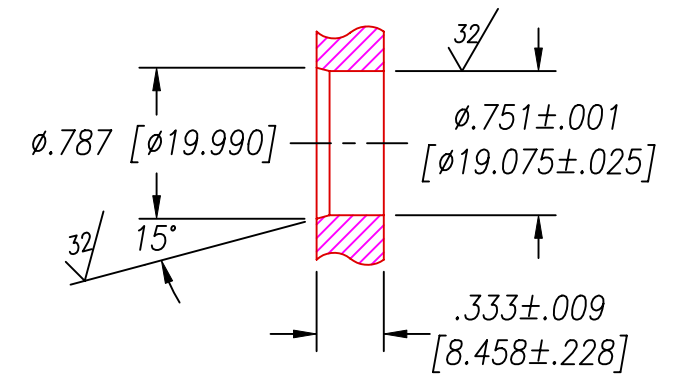


SPF12 INSTALLATION PORT




RECOMMENDED RETAINING RING  
TRUARC #5100-75 OR EQUAL

2219-1	35 [889]	34.35 [872.5]	SPF12-E-150-4-TEE18-35-35
2219	24 [610]	45.35 [1151.9]	SPF12-E-150-4-TEE18-24-45
PART #	X	Y	DESCRIPTION

NOTES:

1. LEAK TEST: 80 PSI, NO BUBBLES 3 MINUTES MINIMUM.
2. HYPOT 630 VDC 500 MΩ 0.01 SEC MINIMUM, WIRE TO WIRE.
3. ALL TESTS ARE PERFORMED AT ROOM TEMPERATURE.
4. ALL PARTS MUST PASS ALL TESTS.
5. WIRES ARE NOT REQUIRED TO BEND SHARPLY AT EPOXY SEAL SURFACE.
6. NO COSMETIC SURFACE VOIDS ARE ACCEPTABLE ON O-RING SEALING SURFACES, COSMETIC SURFACE VOIDS SMALLER THAN ø.035 [ø0.89] ARE ACCEPTABLE ON ALL OTHER SURFACES.
7. REF-PARTS ARE DEFLASHED ON PARTING LINE +.005 [0.13] MAXIMUM.
8. DIMENSIONS ARE IN INCHES [millimeters].
9. PAVE-SEAL CAN BE A BI-DIRECTIONAL HERMETIC SEAL FOR VACUUM AND MOST PRESSURES. FOR PRESSURES ABOVE 150 PSI (10 BAR), CHECK WITH SALES ENGINEERING.

6	A/R	PAVE-Seal 150	EPOXY BLACK
5	2	EE18 UL1180 BLU	WIRE 18EE UL1180 7/#26 .014
4	2	EE18 UL1180 BK	WIRE 18EE UL1180 19/#37 BLACK
3	A/R	PARKER O-LUBE	LUBRICANT O-RING BARIUM-BASED
2	1	-016 VITON	O-RING -016 VITON 75
1	1	0130	HOUSING SPF12-E
ITEM	QTY	PART #	DESCRIPTION


 2751 Thunderhawk Court  
 Dayton, Ohio 45414-3445  
 U.S.A.  
 (937)890-1100  
 fax (937)890-5165  
 www.pavetechnologyco.com

DESCRIPTION PAVE-Seal@ Cable Harnesses

SEE CHART

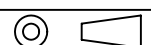
PART NUMBER

2219

REVISION LEVEL

G

PROJECTION



ALL DIMENSIONS AND TOLERANCES APPLY TO FINISHED PART IN INCHES  
 ALLOWABLE TOLERANCES UNLESS SPECIFIED OTHERWISE: NONE +/-0.5  
 .X DECIMAL +/- 0.1 .XX DECIMAL +/- 0.02 .XXX DECIMAL +/-0.005  
 ANGLES +/- 1 DEG SURFACE FINISH 128 microinch RMS