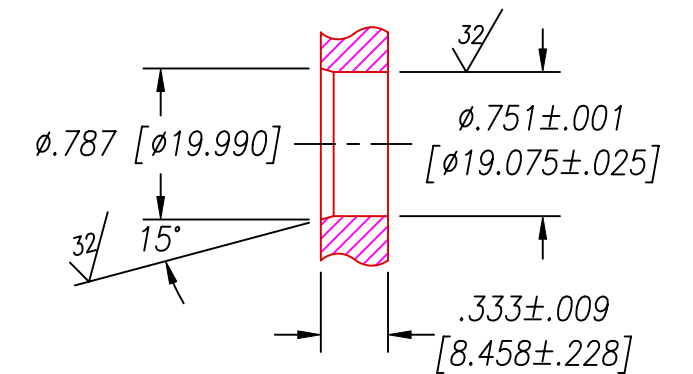


SPF12 INSTALLATION PORT



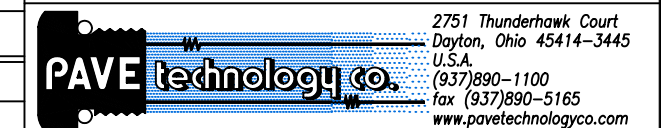
RECOMMENDED RETAINING RING  
TRUARC #5100-75 OR EQUAL

NOTES:

1. HE LEAK TEST @1 ATM.  $10 \times 10^{-7}$  CC/S OR LESS. TEST PERFORMED WITH -016 VITON O-RING.
2. HYPOT 630 VDC 500 M $\Omega$  0.01 SEC MINIMUM, WIRE TO WIRE & SHIELDS.
3. ALL TESTS ARE PERFORMED AT ROOM TEMPERATURE.
4. ALL PARTS MUST PASS ALL TESTS.
5. WIRE POSITIONING IS APPROXIMATE & VARIABLE.
6. NO VOIDS ARE ACCEPTABLE ON O-RING SEALING SURFACES, VOIDS SMALLER THAN  $\phi.035$  [ $\phi.89$ ] ARE ACCEPTABLE ON ALL OTHER SURFACES.
7. REF-PARTS ARE DEFLASHED ON PARTING LINE +.005 MAXIMUM.
8. DIMENSIONS ARE IN INCHES [mm].

6	A/R	PAVE-Seal 200	EPOXY BLACK
5	2	TZ2/C#22JTSP	CABLE M27500-22RC2S06
4	3	TZ2/C#26JTSP	CABLE M27500-26RC2S06
3	A/R	SUPER O-LUBE	LUBRICANT O-RING SILICONE-BASED
2	1	-016 FLURO	O-RING -016 FLUROSILICONE 70
1	1	0130	HOUSING SPF12-E
ITEM	QTY	PART#	DESCRIPTION

ALL DIMENSIONS AND TOLERANCES APPLY TO FINISHED PART IN INCHES  
ALLOWABLE TOLERANCES UNLESS SPECIFIED OTHERWISE: NONE  $\pm 0.5$   
.X DECIMAL  $\pm 0.1$  .XX DECIMAL  $\pm 0.02$  .XXX DECIMAL  $\pm 0.005$   
ANGLES  $\pm 1$  DEG SURFACE FINISH 128 MICROINCH RMS



DESCRIPTION PAVE-Seal Cable Harnesses  
SPF12-E-200-2TSP/3TSP-TZ22/TZ26-21-21

PART NUMBER

2226

REVISION LEVEL

D

PROJECTION

