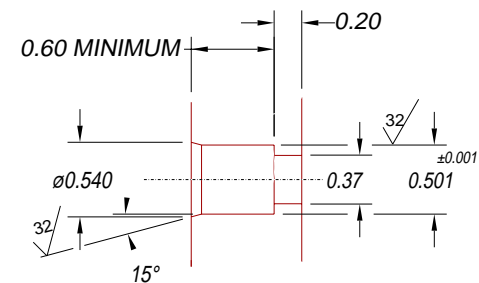
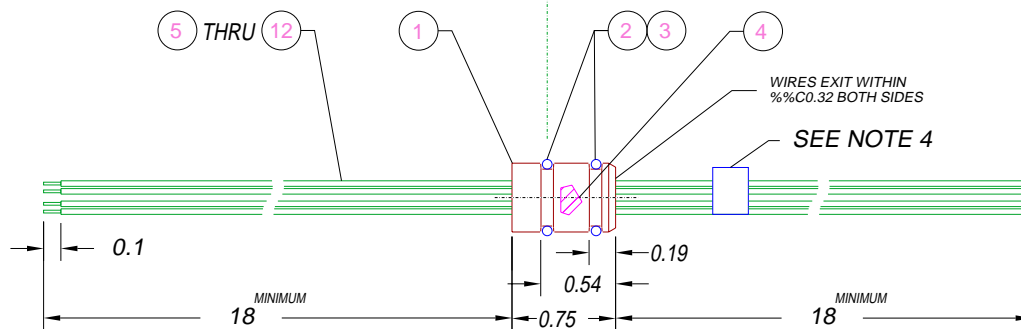
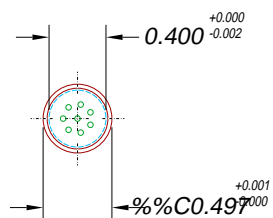


PRESSURE ATMOSPHERE



LEAK TEST PORT

**NOTES:**

1. LEAK TEST 100%:  
1000 PSI, NO BUBBLES 2 MINUTES MINIMUM.  
QUALIFICATION (FIRST ARTICLES ONLY):  
10 CYCLES TO 1000 PSI; 9 FOR 10 MINUTES, LAST ONE 1 HOUR HOLD, NO BUBBLES.
2. HYPOT 630 VDC 500 MW .01 SEC MINIMUM, WIRE TO WIRE.
3. ALL TESTS ARE PERFORMED AT ROOM TEMPERATURE.
4. EACH PART SHALL BE INDIVIDUALLY NUMBERED & THE CERTIFICATION REPORT SHALL REFERENCE THAT NUMBER.

12	37"	E26 PURPLE	WIRE 26E MIL-W-16878 .010 7/34
11	37"	E26 RED	WIRE 26E MIL-W-16878 .010 7/34
10	37"	E26 ORANGE	WIRE 26E MIL-W-16878 .010 7/34
9	37"	E26 GREEN	WIRE 26E MIL-W-16878 .010 7/34
8	37"	E26 GRAY	WIRE 26E MIL-W-16878 .010 7/34
7	37"	E26 BROWN 7 STR	WIRE 26E MIL-W-16878 .010 7/34
6	37"	E26 BLUE	WIRE 26E MIL-W-16878 .010 7/34
5	37"	E26 BLACK STRD	WIRE 26E MIL-W-16878 .010 7/34
4	A/R	PAVE-Seal 150	EPOXY BLACK
3	A/R	PARKER O-LUBE	LUBRICANT O-RING BARIUM-BASED
2	2	-012 VITON	O-RING -012 VITON 75
1	1	2263	HOUSING SP8A-AL
ITEM	QTY	PART#	DESCRIPTION

ALL DIMENSIONS AND TOLERANCES APPLY TO FINISHED PART IN INCHES  
ALLOWABLE TOLERANCES UNLESS SPECIFIED OTHERWISE: NONE +/-0.5  
.X DECIMAL +/- 0.1 .XX DECIMAL +/- 0.02 .XXX DECIMAL +/-0.005  
ANGLES +/- 1 DEG SURFACE FINISH 128 microinch RMS



DESCRIPTION PAVE-Seal® Cable Harnesses  
**SP8A-AL-150-8-TE26-18-18**

PART NUMBER  
**2274**

