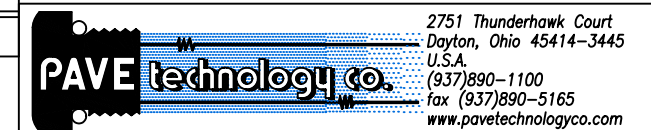


RECOMMENDED RETAINING RING
TRUARC N5000-56 OR EQUAL

NOTES:

1. HE LEAK TEST @1 ATM. 10×10^{-7} CC/S OR LESS.
2. HYPOT 630 VDC 500 MΩ 0.01 SEC MINIMUM, WIRE TO WIRE.
3. ALL TESTS ARE PERFORMED AT ROOM TEMPERATURE.
4. ALL PARTS MUST PASS ALL TESTS.
5. WIRES ARE NOT REQUIRED TO BEND SHARPLY AT EPOXY SEAL SURFACE.
6. NO COSMETIC SURFACE VOIDS ARE ACCEPTABLE ON O-RING SEALING SURFACES, COSMETIC SURFACE VOIDS SMALLER THAN 0.035 [0.89] ARE ACCEPTABLE ON ALL OTHER SURFACES.
7. DIMENSION IS OVERALL LENGTH EXCLUDING OVERFILL ON ATMOSPHERE SIDE OF HOUSING.
8. REF-PARTS ARE DEFLASHED ON PARTING LINE +.005 [0.13] MAXIMUM.
9. DIMENSIONS ARE INCHES [millimeters].
10. PAVE-SEAL CAN BE A BI-DIRECTIONAL HERMETIC SEAL FOR VACUUM AND MOST PRESSURES. FOR PRESSURES ABOVE 150 PSI (10 BAR), CHECK WITH SALES ENGINEERING.

5	A/R	FOMBLIN YVAC 3	LUBRICANT O-RING FOMBLIN GREASE
4	2	-012 VITON	O-RING -012 VITON 75
3	A/R	PAVE-Seal 150	EPOXY BLACK
2	9	KAPTON K22	WIRE 22 KAPTON M81381/12-22-N NATURAL
1	1	1226M	HOUSING SP8M-E
ITEM	QTY	PART#	DESCRIPTION



DESCRIPTION PAVE-Seal® Cable Harnesses
SP8M-E-150-9-K22-80-12

PART NUMBER

2414

REVISION LEVEL

C

PROJECTION



ALL DIMENSIONS AND TOLERANCES APPLY TO FINISHED PART IN INCHES
ALLOWABLE TOLERANCES UNLESS SPECIFIED OTHERWISE: NONE +/-0.5
.X DECIMAL +/- 0.1 .XX DECIMAL +/- 0.02 .XXX DECIMAL +/-0.005
ANGLES +/- 1 DEG SURFACE FINISH 128 microinch RMS