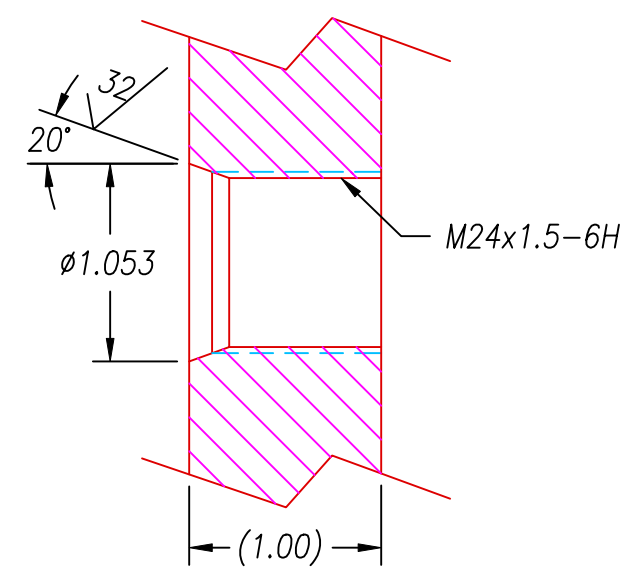


LEAK TEST PORT



- NOTES:
1. LEAK TEST: 80 PSI, NO BUBBLES 5 MINUTES MINIMUM.
QUALIFICATION ONLY: HE LEAK TEST @1 ATM. 10^{-6} CC/S.
 2. HYPOT 630 VDC 500 MΩ 0.01 SEC MINIMUM, WIRE TO WIRE & SHIELDING.
 3. ALL TESTS ARE PERFORMED AT ROOM TEMPERATURE.
 4. PERCENTAGE OF PARTS TESTED WILL BE 100% (MAY BE A LESSER PERCENTAGE FOR LARGE PRODUCTION QUANTITIES, UNLESS OTHERWISE NOTED OR REQUIRED).
 5. NO VOIDS LARGER THAN Ø0.035 ARE ACCEPTABLE.
 6. REF-OPERATING TEMPERATURE -20°C TO 105°C.

5	A/R	PARKER O-LUBE	LUBRICANT O-RING BARIUM-BASED
4	1	-117 VITON	O-RING -117 VITON 75
3	1	ATI2210-0001	CABLE 10/C #22 PVC SHIELDED
2	A/R	PAVE-Seal 150	EPOXY BLACK
1	1	1201	HOUSING M24x1.5-V
ITEM	QTY	PART#	DESCRIPTION

ALL DIMENSIONS AND TOLERANCES APPLY TO FINISHED PART IN INCHES
 ALLOWABLE TOLERANCES UNLESS SPECIFIED OTHERWISE: NONE +/-0.5
 .X DECIMAL +/- 0.1 .XX DECIMAL +/- 0.02 .XXX DECIMAL +/-0.005
 ANGLES +/- 1 DEG SURFACE FINISH 128 microinch RMS



DESCRIPTION	PAVE-Seal® Cable Harnesses	
	M24-V-150-1-10C-PVC22-216-24	
PART NUMBER	2949	REVISION LEVEL
		A
		PROJECTION