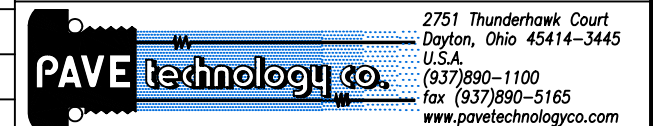


NOTES:

1. HE LEAK TEST @1 ATM. 10^{-7} CC/S.
2. HYPOT 630 VDC 500 MΩ 0.01 SEC MINIMUM, WIRE TO WIRE TO SHIELDING & HOUSING.
3. ALL TESTS ARE PERFORMED AT ROOM TEMPERATURE.
4. PERCENTAGE OF PARTS TESTED WILL BE 100% (MAY BE A LESSER PERCENTAGE FOR LARGE PRODUCTION QUANTITIES, UNLESS OTHERWISE NOTED OR REQUIRED).
5. REF-OPERATING TEMPERATURE -20°C TO 80°C.
6. NO VOIDS LARGER THAN $\phi 0.035$ [0.89] ARE ACCEPTABLE.
7. DIMENSIONS ARE IN INCHES [MILLIMETERS].
8. CABLE LOCATION IS APPROXIMATE AND VARIABLE.

6	1	0183	NUT VS15-SS
5	A/R	SUPER O-LUBE	LUBRICANT O-RING SILICONE BASED
4	1	-215 VITON	O-RING -215 VITON 75
3	A/R	PAVE-Seal 150	EPOXY BLACK
2	1	PROFIBUS DP	CABLE PROFIBUS DP - PURPLE
1	1	0161	HOUSING VS15L-SS
ITEM	QTY	PART#	DESCRIPTION

ALL DIMENSIONS AND TOLERANCES APPLY TO FINISHED PART IN INCHES
 ALLOWABLE TOLERANCES UNLESS SPECIFIED OTHERWISE: NONE +/-0.5
 .X DECIMAL +/- 0.1 .XX DECIMAL +/- 0.02 .XXX DECIMAL +/-0.005
 ANGLES +/- 1 DEG SURFACE FINISH 128 microinch RMS



DESCRIPTION PAVE-Seal Cable Harnesses
 VS15L-SS-150-1-PROFIBUS/DP-3m-3m

PART NUMBER
 2955

REVISION LEVEL B
 PROJECTION