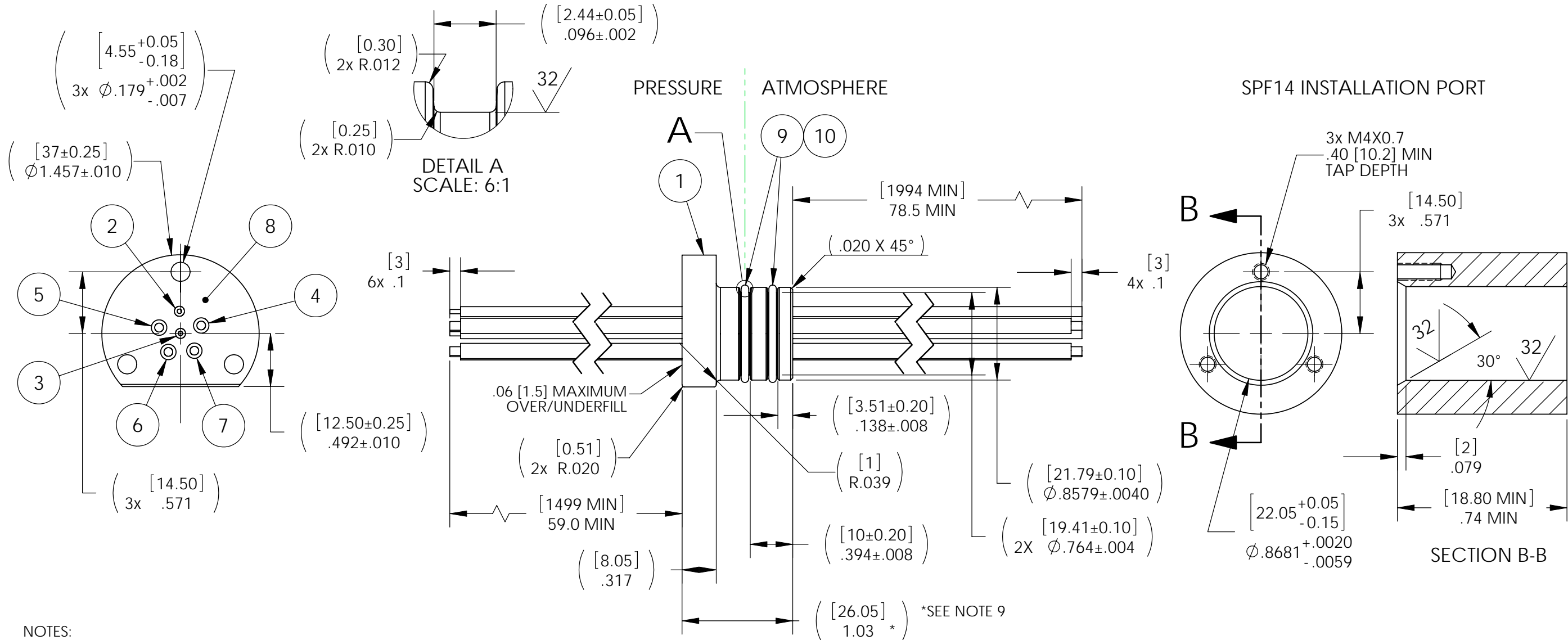


O-RING NOT SHOWN FOR CLARITY
DIMENSIONS EQUAL FOR EACH GROOVE



NOTES:

1. LEAK TEST: 315 PSI, NO BUBBLES 1.5 MINUTES MINIMUM. NO SCREWS USED DURING PRODUCTION TESTING.
2. QUALIFICATION ONLY: 1563 PSI, NO BURST, 1 MINUTE MINIMUM. SCREWS USED DURING QUALIFICATION TEST.
3. QUALIFICATION ONLY: HE LEAK TEST VACUUM 10X10⁻⁷ CC/SEC OR LESS, VACUUM APPLIED ON THE ATMOSPHERE SIDE WITH NO SCREWS USED.
4. HYPOT 630 VDC 500 MEGOHMS MINIMUM 0.01 SECOND MINIMUM WIRE TO WIRE.
5. ALL TESTS ARE PERFORMED AT ROOM TEMPERATURE.
6. ALL PARTS MUST PASS ALL TESTS.
7. WIRE POSITIONING IS APPROXIMATE & VARIABLE.
8. NO VOIDS ARE ACCEPTABLE ON O-RING SEALING SURFACES, VOIDS SMALLER THAN $\varnothing 0.035$ [.89] ARE ACCEPTABLE ON ALL OTHER SURFACES.
9. DIMENSION IS OVER-ALL-LENGTH EXCLUDING OVERFILL ON PRESSURE SIDE OF HOUSING.
10. REF-OPERATING TEMPERATURE -40°C TO 125°C.
11. REF-PARTS ARE DEFLASHED ON PARTING LINE +0.005 [.13] MAXIMUM.
12. DIMENSIONS ARE INCHES[millimeters].
13. PAVE-SEAL CAN BE A BI-DIRECTIONAL HERMETIC SEAL FOR VACUUM AND MOST PRESSURES. FOR PRESSURES ABOVE 150 PSI (10 BAR), CHECK WITH SALES ENGINEERING.

10	A/R	PARKER O-LUBE	LUBRICANT O-RING BARIUM-BASED
9	2	-018 VITON LT	O-RING -018 VITON LOW-TEMP 75
8	A/R	PAVE-Seal 150	EPOXY BLACK
7	1	GXL12 BLUE	WIRE 12GXL BARE COPPER 19/#25
6	1	GXL12 BLK	WIRE 12GXL BARE COPPER 19/#25
5	1	GXL12 PINKBLK	WIRE 12GXL BARE COPPER 19/#25
4	1	GXL12 BRNWHT	WIRE 12GXL BARE COPPER 19/#25
3	1	GXL18 BLK/ORG	WIRE 18GXL BARE COPPER 16/#30
2	1	GXL18 YEL/WHT	WIRE 18GXL BARE COPPER 16/#30
1	1	3402	HOUSING SPF14 EPOXY
ITEM	QTY	PART NUMBER	DESCRIPTION

PAVE technology co.
2751 Thunderhawk Court
Dayton, OH 45414-3445
U.S.A.
tel (937) 890-1100
fax (937) 8905165
www.pavetechnologyco.com

DESCRIPTION
SPF14-E-150-2/4-GXL18/12-59-79

PART NUMBER
4064

MATERIAL NOTED

REVISION LEVEL -

PROJECTION

ALL DIMENSIONS AND TOLERANCES APPLY TO FINISHED PART IN INCHES.
ALLOWABLE TOLERANCES UNLESS SPECIFIED OTHERWISE: NONE ±0.5
X.X DECIMAL ±0.1 X.XX DECIMAL ±0.02 X.XXX DECIMAL ±0.005
ANGLES ±1 DEGREE SURFACE FINISH 128 microinch RMS