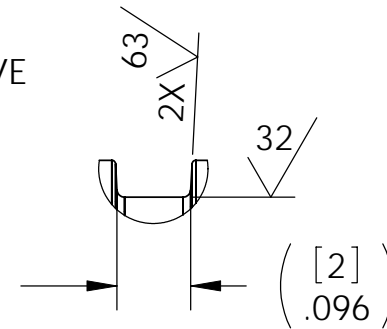
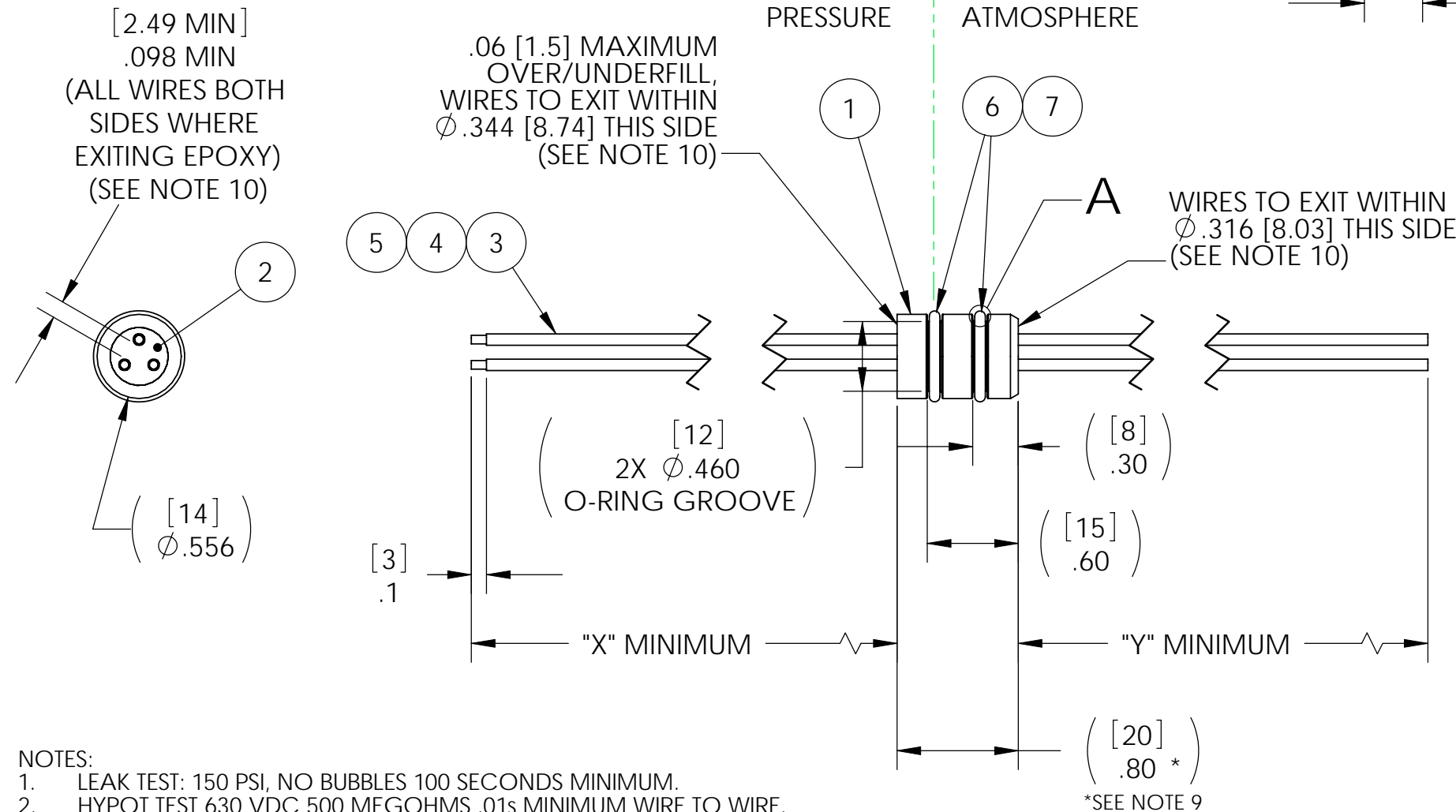
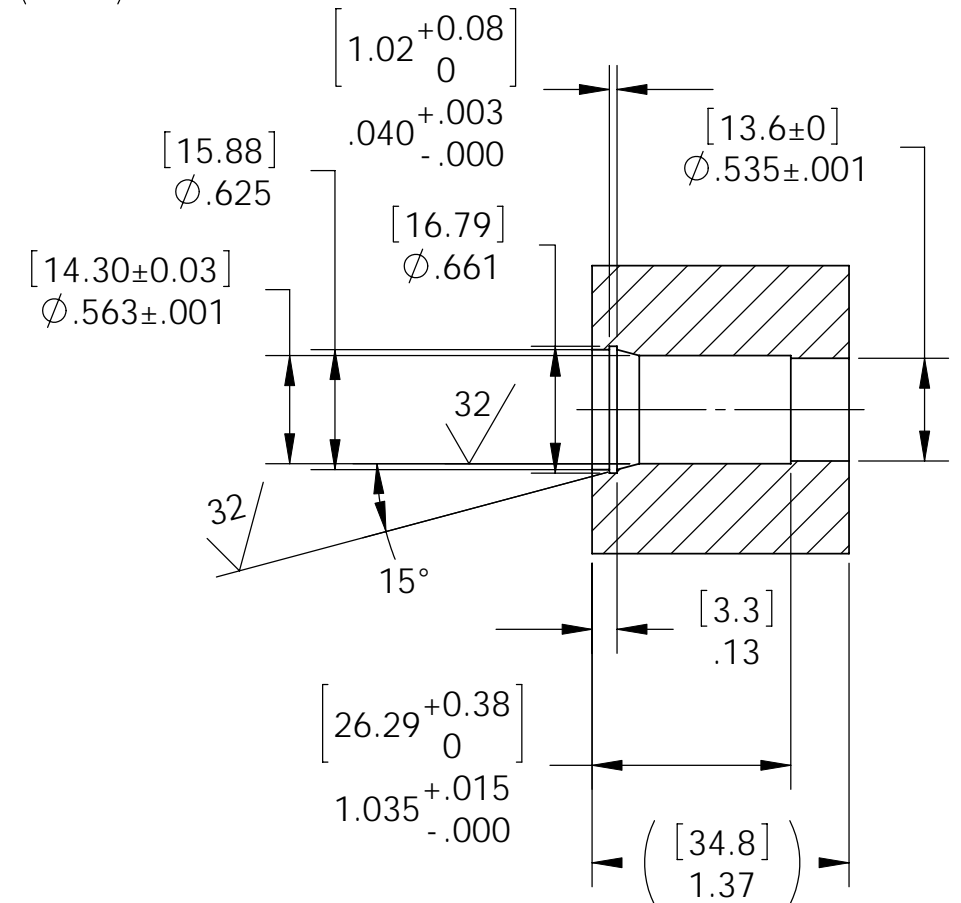


PAVE#	"X"	"Y"	DESCRIPTION
4204	7.9 [200]	7.9 [200]	SP9M-E-200-3-TZZ16-20-20cm
4204-1	19.7 [500]	19.7 [500]	SP9M-E-200-3-TZZ16-50-50cm
4204-2	7.9 [200]	3.9 [100]	SP9M-E-200-3-TZZ16-20-10cm

2X O-RING GROOVE
DETAIL A
SCALE 4 : 1



SP9M INSTALLATION PORT
RECOMMENDED RETAINING RING:
SMALLEY WHM-62 OR EQUAL



NOTES:

1. LEAK TEST: 150 PSI, NO BUBBLES 100 SECONDS MINIMUM.
2. HYPOT TEST 630 VDC 500 MEGOHMS .01s MINIMUM WIRE TO WIRE.
3. ALL TESTS ARE PERFORMED AT ROOM TEMPERATURE.
4. ALL PARTS MUST PASS ALL TESTS.
5. NO VOIDS ARE ACCEPTABLE ON O-RING SEALING SURFACES, VOIDS SMALLER THAN Ø0.035 [89] ARE ACCEPTABLE ON ALL OTHER SURFACES.
6. REF-OPERATING TEMPERATURE -40°C TO 150°C.
7. DIMENSIONS ARE INCHES [MILLIMETERS].
8. PAVE-Seal CAN BE A BI-DIRECTIONAL HERMETIC SEAL FOR VACUUM AND MOST PRESSURES. FOR PRESSURES ABOVE 150 PSI (10 BAR), CHECK WITH SALES ENGINEERING.
9. DIMENSION IS OAL EXCLUDING OVERFILL ON PRESSURE SIDE.
10. NOTED DIMENSIONS WILL ENSURE .118 [3] MIN SPACING BETWEEN ALL CONDUCTORS AND THE INSTALLATION PORT.
11. HOUSING IS DEFLASHED ON PARTING LINE +.005 [1.3] MAXIMUM.

ITEM	QTY	PART NUMBER	DESCRIPTION
7	2	-013 VM128-75	O-RING -013 VM128-75 VITON
6	A/R	PARKER O-LUBE	LUBRICANT O-RING BARIUM-BASED
5	1	TZZ16 BLACK	WIRE 16TZZ XL-ETFE .016 WALL MIN .011 19 STRAND
4	1	TZZ16 RED	WIRE 16TZZ XL-ETFE .016 WALL MIN .011 19 STRAND
3	1	TZZ16 WHITE	WIRE 16TZZ MIL-W-22759/34 19STRAND
2	A/R	PAVE-Seal 200	EPOXY BLACK
1	1	4259	HOUSING SP9M-E

PAVE technology co.

2751 Thunderhawk Court
Dayton, OH 45414-3445
U.S.A.
tel (937) 890-1100
fax (937) 8905165
www.pavetechnologyco.com

DESCRIPTION
*SEE TABLE

PART NUMBER
4204*

MATERIAL NOTED

REVISION LEVEL
C

PROJECTION

ALL DIMENSIONS AND TOLERANCES APPLY TO FINISHED PART IN INCHES.
ALLOWABLE TOLERANCES UNLESS SPECIFIED OTHERWISE: NONE ±0.5
X.X DECIMAL ±0.1 X.XX DECIMAL ±0.02 X.XXX DECIMAL ±0.005
ANGLES ±1 DEGREE SURFACE FINISH 128 microinch RMS