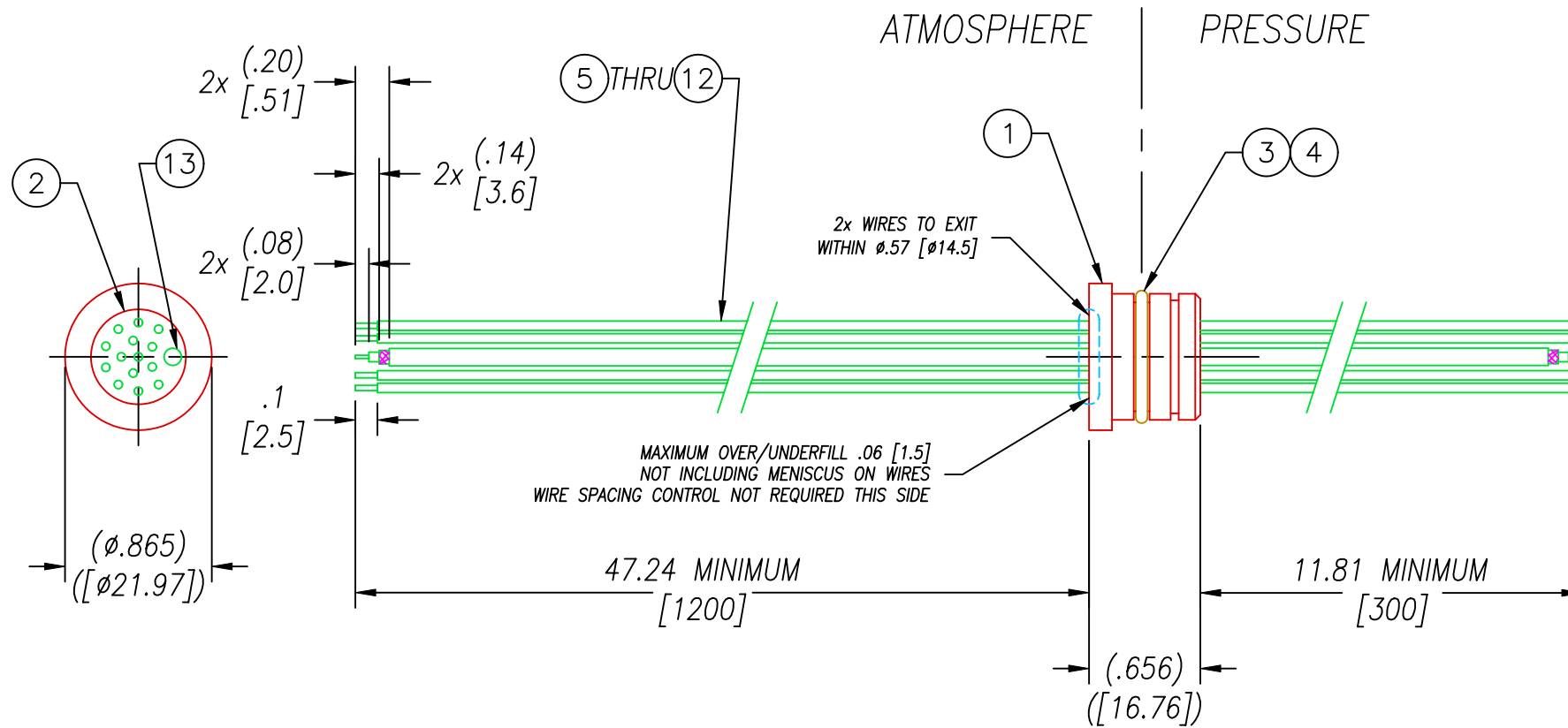
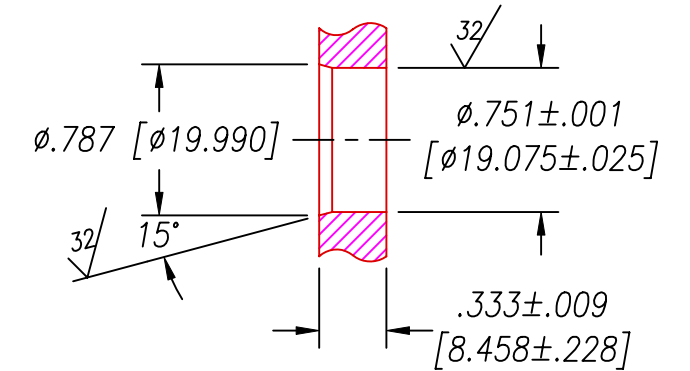


TWIST TOGETHER
1-3 TWISTS/INCH
BOTH SIDES
PER TABLE

7	VIOLET WHITE
6	BLUE WHITE
5	GREEN WHITE
4	YELLOW WHITE
3	ORANGE WHITE
2	BROWN BLACK
1	BROWN BLACK
PAIR	COLOR



SPF12 INSTALLATION PORT



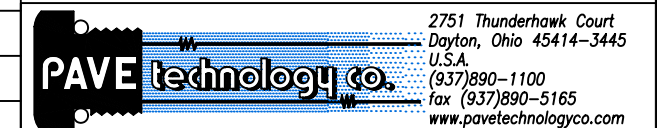
RECOMMENDED RETAINING RING
TRUARC #5100-75 OR EQUAL

NOTES:

1. LEAK TEST: 80 PSI, NO BUBBLES 2.5 MINUTES MINIMUM.
2. HYPOT 630 VDC 500 MΩ 0.01 SEC MINIMUM, WIRE TO WIRE & SHIELD.
3. ALL PARTS MUST PASS ALL TESTS.
4. ALL TESTS ARE PERFORMED AT ROOM TEMPERATURE.
5. ITEM 14 INCLUDED, NOT SHOWN.
6. WIRE POSITIONING IS APPROXIMATE & VARIABLE.
7. NO VOIDS ARE ACCEPTABLE ON O-RING SEALING SURFACES, VOIDS SMALLER THAN ø.035 [ø.89] ARE ACCEPTABLE ON ALL OTHER SURFACES.
8. REF-PARTS ARE DEFLASHED ON PARTING LINE +.005 MAXIMUM.
9. DIMENSIONS ARE IN INCHES [mm].
10. PAVE-SEAL CAN BE A BI-DIRECTIONAL HERMETIC SEAL FOR VACUUM AND MOST PRESSURES. FOR PRESSURES ABOVE 150 PSI (10 BAR), CHECK WITH SALES ENGINEERING.

14	1	N5100-75-HST	RETAINING RING .75"
13	1	RG179 M17/094	WIRE COAX M17/094 B83264
12	2	EE26 UL1180 BLK	WIRE 26EE UL1180 7/#34
11	2	EE26 UL1180 BRN	WIRE 26EE UL1180 7/#34
10	1	EE26 UL1180 YEL	WIRE 26EE UL1180 7/#34
9	1	EE26 UL1180 GRN	WIRE 26EE UL1180 7/#34
8	5	EE26 UL1180 WHT	WIRE 26EE UL1180 7/#34
7	1	EE26 UL1180 ORG	WIRE 26EE UL1180 7/#34
6	1	EE26 UL1180 BLU	WIRE 26EE UL1180 7/#34
5	1	EE26 UL1180 VIO	WIRE 26EE UL1180 7/#34
4	A/R	PARKER O-LUBE	LUBRICANT O-RING BARIUM-BASED
3	1	-016 BUNA	O-RING -016 BUNA 75
2	A/R	PAVE-Seal 150	EPOXY BLACK
1	1	0130	HOUSING SPF12-E
ITEM	QTY	PART #	DESCRIPTION

ALL DIMENSIONS AND TOLERANCES APPLY TO FINISHED PART IN INCHES
ALLOWABLE TOLERANCES UNLESS SPECIFIED OTHERWISE: NONE +/-0.5
.X DECIMAL +/- 0.1 .XX DECIMAL +/- 0.02 .XXX DECIMAL +/-0.005
ANGLES +/- 1 DEG SURFACE FINISH 128 microinch RMS



DESCRIPTION PAVE-Seal® Cable Harnesses
SPF12-E-150-7TP/1-TEE26/RG179-1200-300mm

PART NUMBER

4364

REVISION LEVEL

A

PROJECTION

