

ITEM 14 POS A*	ITEM 7 POS 1*
ITEM 14 POS B*	ITEM 7 POS 2*
ITEM 14 POS C	ITEM 9 POS 3
ITEM 14 POS D	ITEM 9 POS 4
ITEM 14 POS E	UNUSED
ITEM 14 POS F	UNUSED
ITEM 14 POS G	UNUSED
ITEM 14 POS H	ITEM 8 POS 1
ITEM 14 POS J	ITEM 10 POS 5
ITEM 14 POS K	ITEM 10 POS 2
ITEM 14 POS L*	ITEM 10 POS 1*
ITEM 14 POS M*	ITEM 10 POS 6*
ITEM 14 POS N	ITEM 9 POS 1
ITEM 14 POS P	ITEM 9 POS 2
ITEM 14 POS R	ITEM 8 POS 3
ITEM 14 POS S	ITEM 8 POS 2
ITEM 14 POS T	ITEM 10 POS 3
ITEM 14 POS U	ITEM 10 POS 4

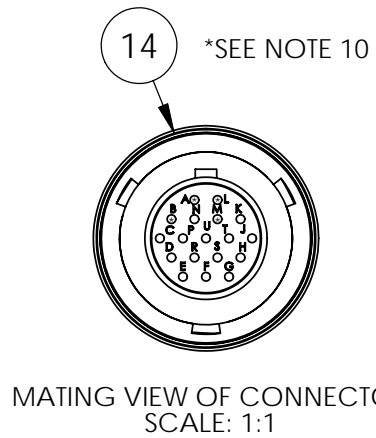
PINOUT TABLE

NOTES:

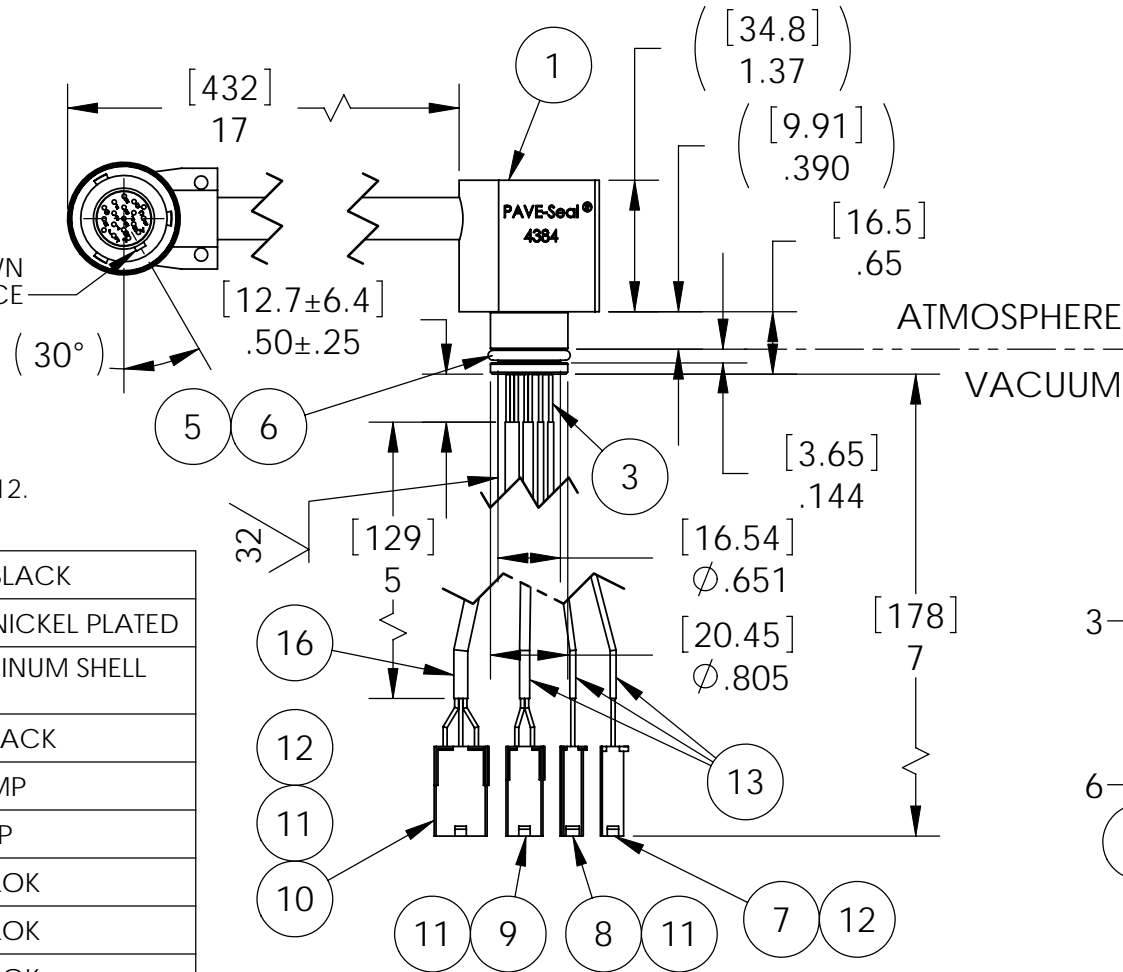
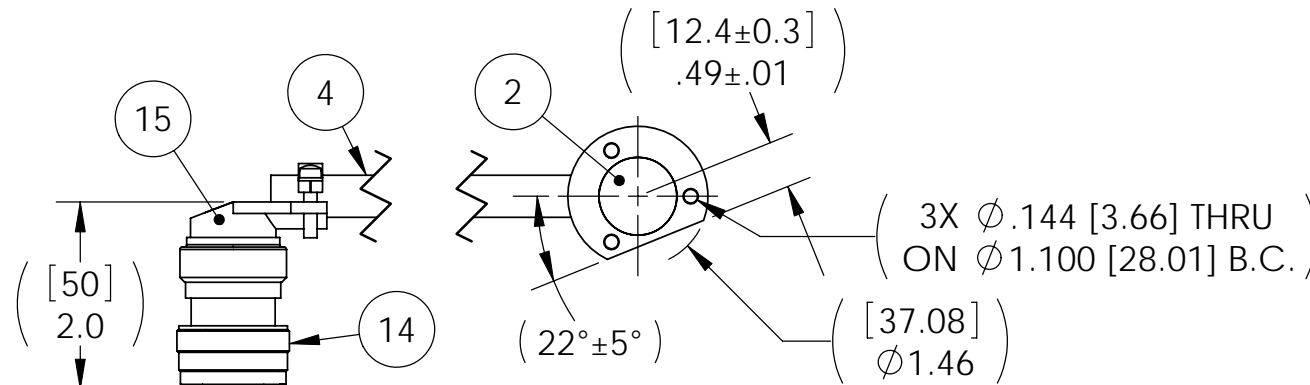
10. POSITIONS IN ITEMS 7, 10, & 14 MARKED WITH AN ASTRISK HAVE 2 OF ITEM 3 ATTACHED, IN ITEMS 7 & 10 THESE POSITIONS USE ITEM 12.

16	1	FIT-221-3/16	TUBING SHRINK 3/16" IRRADIATED POLYOLEFIN BLACK
15	1	M85049/51S14	S/R RIGHT ANGLE SELF LOCKING ELECTROLESS NICKEL PLATED
14	1	MS3476L14-18S	PLUG 18#20 SOC SERIES II NICKEL PLATED ALUMINUM SHELL WITH EPOXY INSERT
13	3	FIT-221-1/8	TUBING SHRINK 1/8" IRRADIATED POLYOLEFIN BLACK
12	4	170366-3	SOCKET AU OVER NI PLATED DOUBLE WIRE CRIMP
11	11	170365-3	SOCKET AU OVER NI PLATED SINGLE WIRE CRIMP
10	1	172160-1	HOUSING CAP 6 POS MINI UNIVERSAL MATE-N-LOK
9	1	172159-1	HOUSING CAP 4 POS MINI UNIVERSAL MATE-N-LOK
8	1	172234-1	HOUSING CAP 3 POS MINI UNIVERSAL MATE-N-LOK
7	1	172233-1	HOUSING CAP 2 POS MINI UNIVERSAL MATE-N-LOK
6	A/R	FOMBLIN YVAC 3	LUBRICANT O-RING FOMBLIN GREASE
5	1	-114 NITRILE	O-RING -114 NITRILE 75
4	1	5231K37	TUBING PVC BLACK UV-RESISTANT
3	19	TZ22 YLW 19	WIRE 22TZ MIL-W-22759/44A .006 19/#34
2	A/R	PAVE-Seal 150	EPOXY BLACK
1	1	4401	HOUSING SPF13-AL
ITEM	QTY	PART NUMBER	DESCRIPTION

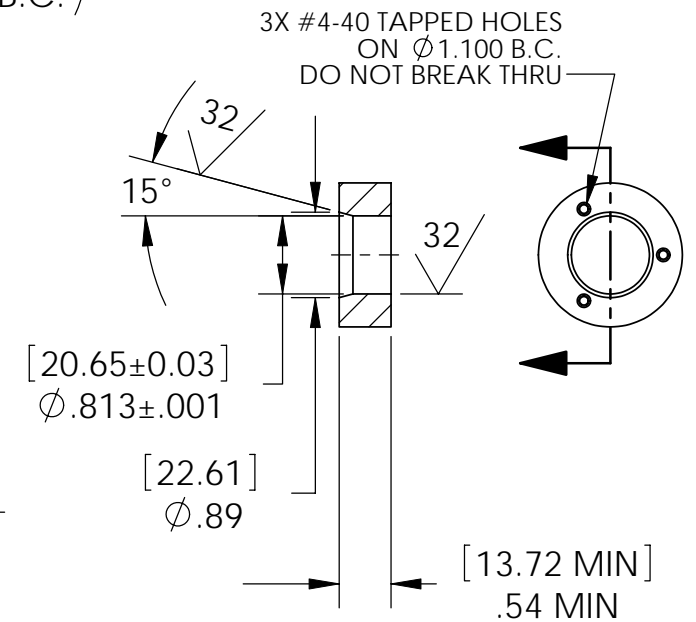
ALL DIMENSIONS AND TOLERANCES APPLY TO FINISHED PART IN INCHES.
ALLOWABLE TOLERANCES UNLESS SPECIFIED OTHERWISE: NONE ±0.5
X.X DECIMAL ±0.1 X.XX DECIMAL ±0.02 X.XXX DECIMAL ±0.005
ANGLES ±1 DEGREE SURFACE FINISH 128 microinch RMS



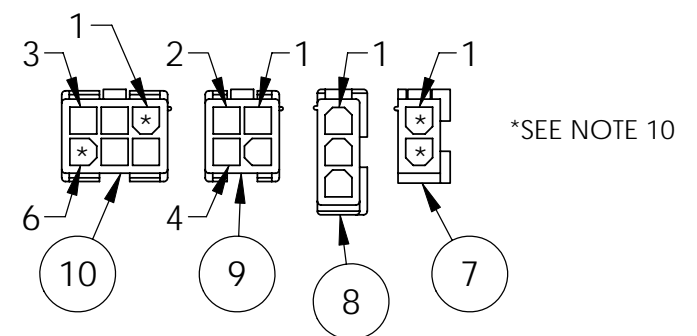
ALIGN MAIN KEY AS SHOWN BEFORE LOCKING S/R IN PLACE



SPF13 INSTALLATION PORT



MATING VIEW OF CONNECTORS SCALE: 1:1



NOTES:

1. HE LEAK TEST @ 1 ATM 10X10⁻⁷ CC/SEC OR LESS.
2. HYPOT 630 VDC 500 MEGOHMS MINIMUM 0.01 SECOND MINIMUM WIRE TO WIRE AND HOUSING WITH MATING CONNECTORS.
3. CONTINUITY TEST <0.5 OHM SOCKET TO SOCKET WITH MATING CONNECTORS.
4. ALL TESTS ARE PERFORMED AT ROOM TEMPERATURE.
5. ALL PARTS MUST PASS ALL TESTS.
6. NO COSMETIC SURFACE VOIDS ARE ACCEPTABLE ON THE O-RING SEALING SURFACE, COSMETIC SURFACE VOIDS SMALLER THAN 0.035 [0.89] ARE ACCEPTABLE ON ALL OTHER SURFACES.
7. REF-OPERATING TEMPERATURE -20 °C TO 80 °C.
8. DIMENSIONS ARE INCHES [millimeters].
9. PAVE-SEAL CAN BE A BI-DIRECTIONAL HERMETIC SEAL FOR VACUUM AND MOST PRESSURES. FOR PRESSURES ABOVE 150 PSI (10 BAR), CHECK WITH SALES ENGINEERING.

PAVE technology co.
2751 Thunderhawk Court
Dayton, OH 45414-3445
U.S.A.
tel (937) 890-1100
fax (937) 8905165
www.pavetechnologyco.com

DESCRIPTION
SPF13-AL-150-19-TZ22-17T-7T

PART NUMBER
4384

MATERIAL NOTED

REVISION LEVEL
A

PROJECTION