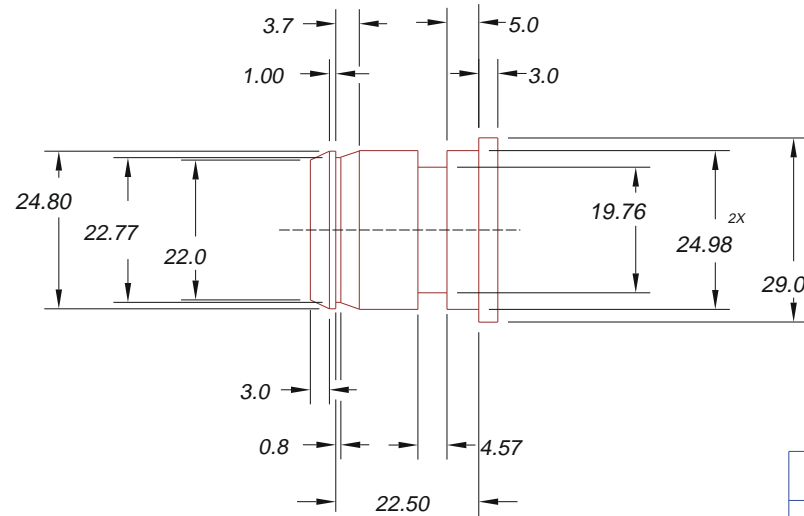
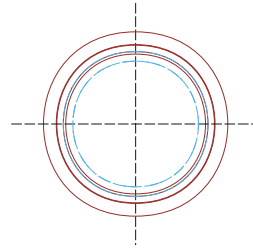
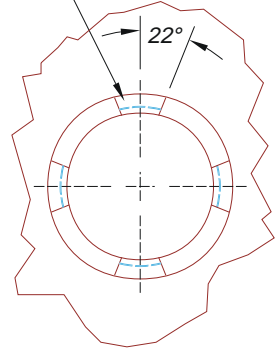


PAVE-Seal HOUSING

PAVESEAL 150 EPOXY



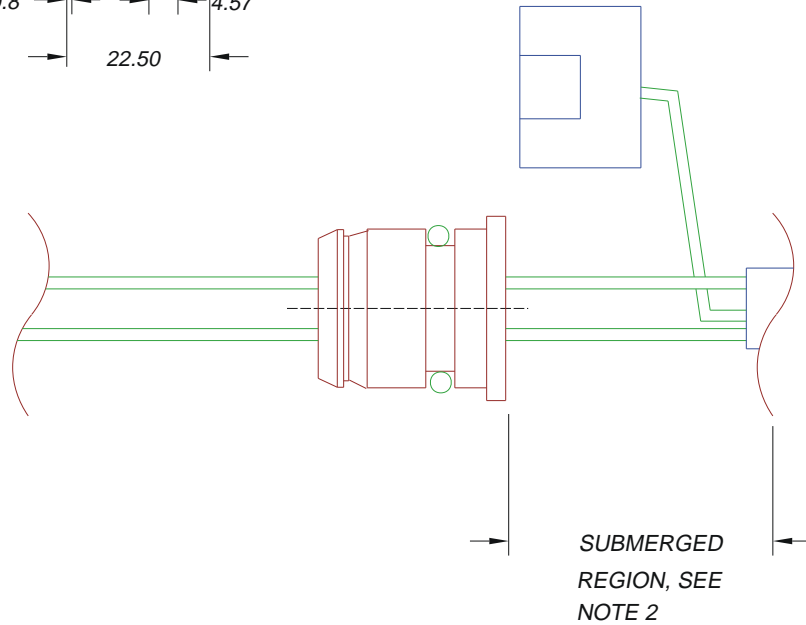
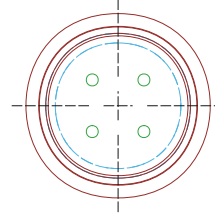
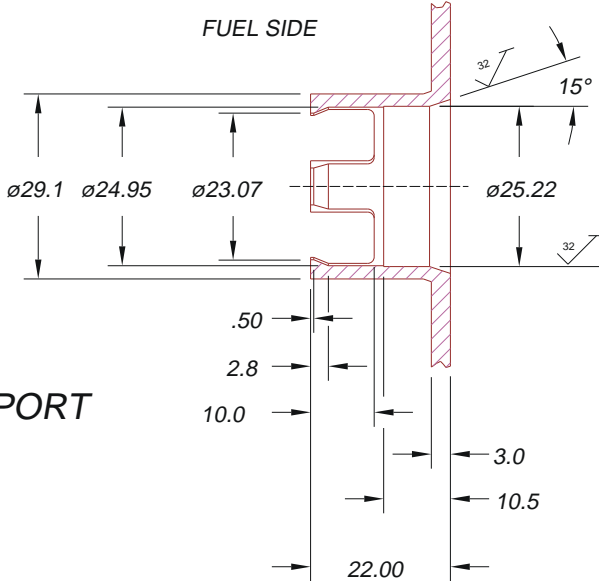
(4) FINGERS FOR SNAP FIT OF PAVE-Seal HARNESS



PRESSURE DIRECTION

ATMOSPHERE SIDE

FUEL SIDE



WIRES TO BE CUT TO LENGTH AND TERMINATED PER CUSTOMER SPECS, BOTH ENDS

SUBMERGED REGION, SEE NOTE 2

INSTALLATION PORT
REFERENCE ONLY

NOTES:

1. TERMINALS TO BE PULL TESTED PER CUSTOMER SPECIFICATIONS.
2. HYPOT TEST 100 VDC, 500 MEGAOHMS WITH NOTED SIDE SUBMERGED IN SALINE SOLUTION.
3. MAX LEAKAGE OF WIRES NOT TO EXCEED .1 CC/MIN @ 20 PSI.
4. CHECK CONTINUITY 1 OHM MAX.

METRIC PRINT

TITLE OR PAVE ORDER CODE	
SPF16-E-4-TE18-*-*	
PART NUMBER	PROJECTION
0826	